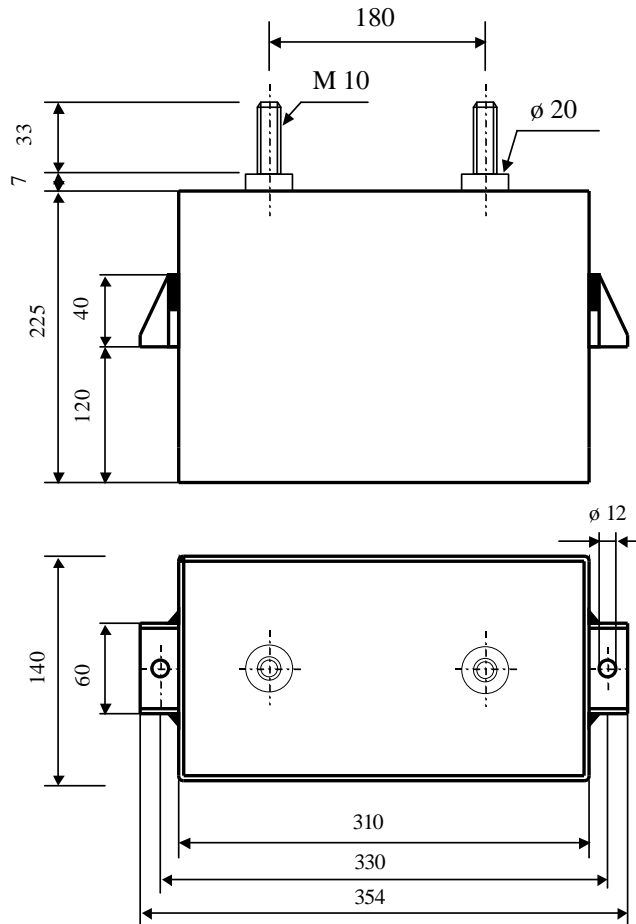


#5802

## Discharge Capacitors

PPMF 270-120.0 r



Dielectric of metallized polypropylene

Threaded outputs

Resin end sealing

Aluminium case  
thick 2.0 mm

Parameter	Symbol		Value	Unit	Condition
Capacitance	C		120	$\mu\text{F}$	1 V / 1 kHz
Tolerance			+ 10 / - 5	%	
Rated voltage	Un DC		2'700	VDC	
Surge current	I cr. max		10'000	A	
RMS Current	Ieff max		100	A RMS	
Equivalent serie resistance	ESR		$\leq 3.0$	m $\Omega$	5 kHz
Stray inductance	ESL		$\leq 70$	nH	
Insulation resistance	Ri x C		> 20'000	s	500 VDC - 1 min
Test voltage between terminals	U T1		5'000	VDC	10 s
Test voltage between terminals to case	U T2		3'500	VAC	10 s
Estimated operational life with inverse voltage max. 96 %			> 1 M	Pulses	2.7 kV / 10 kA / 40°C
Dimension	Symbol			Unit	Condition
Width	B		140	mm	
Length	L		310	mm	
Height	H		225	mm	
Thread			M 10 x 33	mm	
Thread spacing			180	mm	
	M1				
	M0				
	Modification	Date	Visa émetteur		

Condensateurs CH 1400 Yverdon-les-Bains  
 Kondensatoren Tel.: ++41 24 445 66 88  
 Capacitors Fax: ++41 24 445 66 89

**Le Lanché**  
**Capacitors**  
A FISCHER & FANSCHE COMPANY

HJJ

30.03.2009

faisab5802.XLS