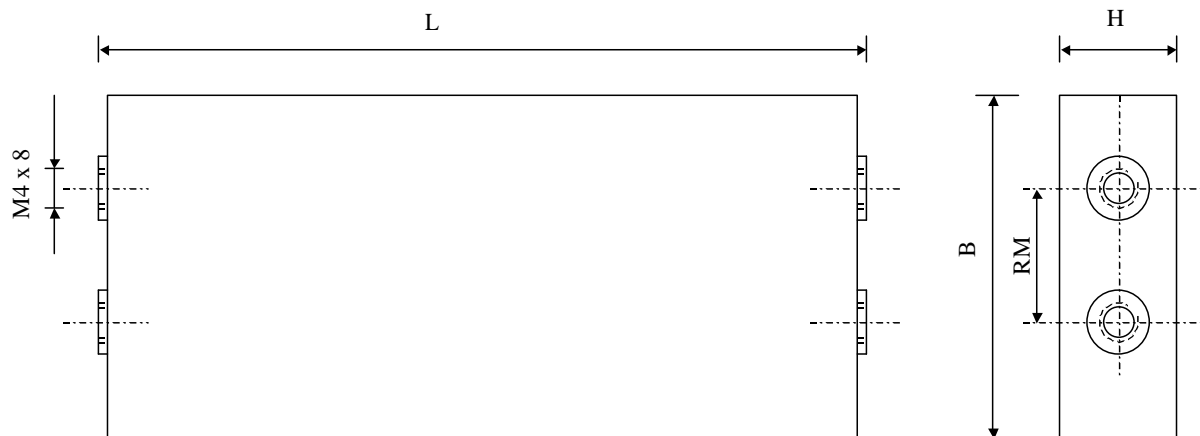


#5575

METALLIZED POLYPROPYLENE CAPACITORS

PPM-4 1400-040 ru K

Preliminary



Dielectric of metallized polypropylene

Plastic case filled epoxy resin

Parameter	Symbol		Value	Unit	Condition
Capacitance	C		0.4	$\mu\text{F}$	1 V / 1 kHz
Tolerance			$\pm 10$	%	
Rated voltage	Un DC		14'000	VDC	
Maximal voltage	U max.		20'000	VDC	
Rated voltage	Un AC		1800	VAC	50 Hz
non repetitive Impulse current	I <sub>t</sub>		2.3	A <sup>2</sup> s	1 time per day
Tangente delta	tg $\delta$		10	1C <sup>4</sup>	1 V / 1 kHz
Euivalent serie resistance	ESR			m $\Omega$	10 kHz
Stray inductance	ESL		$\leq 200$	nH	
Insulation resistance	Ri		$> 25'000$	M $\Omega$	300 VDC - 1 min
Test voltage between terminals	U T1		21'000	VDC	1 min
Operating temperature range			-10 / + 65°C		
Estimated operational life (-3%)			70'000	h	Un DC - 65°C
Dimension	Symbol			Unit	Conditions
Width	B max		70	mm	
Heigth	H max		17.5	mm	
Length	L		430 $\pm$ 1	mm	
Terminals					
Thread ( 4 x )			M4 x 8	mm	
Thread spacing	RM		40	mm	
	M1				
	M0				
	Modification	Date	Visa émetteur		

Condensateurs CH 1401 Yverdon-les-Bains  
 Kondensatoren Tel.: ++41 24 445 66 88  
 Capacitors Fax: ++41 24 445 66 89

**Le lanché**  
**Capacitors**  
A FISCHER & TADICHE COMPANY

HJJ

21.06.2006

faisab5575.XLS