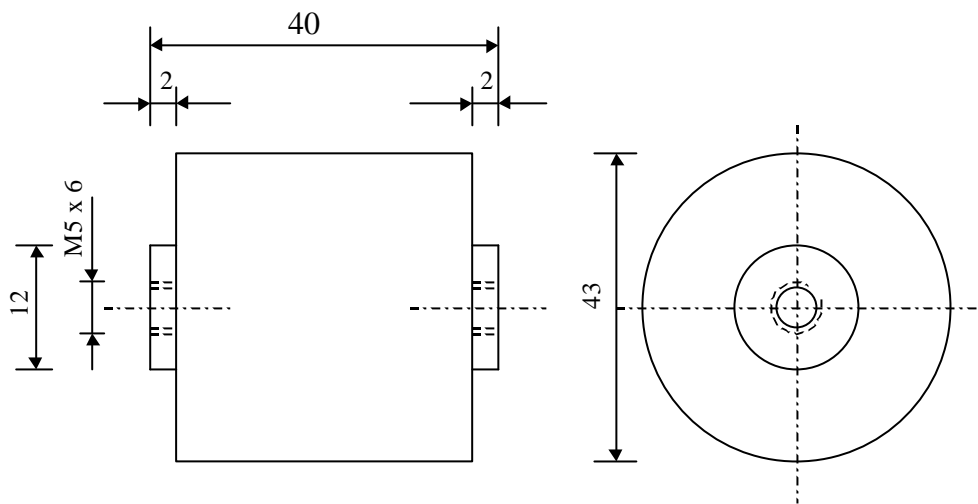


| | | |
|--------|------------------------------------|---------------------------|
| # 3665 | Metallized Polypropylene Capacitor | TYPE PPM 70-2.5 dv III |
|--------|------------------------------------|---------------------------|



Polyester exterior wrap
 Connections: 2 inserts M5 x 6 mm
 Resin epoxy end-seal

Application:
 GTO elimination
 Mid-range frequency filtering

| Parameter | Symbol | Values | Unit | Conditions |
|------------------------------|-------------------|-------------------|------------------|--------------|
| Capacitance | C | 2.5 | μF | 20°C, 1 kHz |
| Tolerance | | ± 10 | % | |
| Rated Voltage | Un DC | 700 | VDC | |
| | Un AC | 400 | VAC | |
| Tangent delta | $\text{tg}\delta$ | $< 3 \text{ E-}4$ | | 1 V - 1 kHz |
| Equivalent serial resistance | ESR | ≤ 2.5 | $\text{m}\Omega$ | 1 V - 10 kHz |
| Time Constant $R_i \times C$ | | $\geq 5'000$ | s | |
| Max RMS | I rms max | 20 | A rms | 10 -100 kHz |
| Slope of Voltage Variation | du/dt max | 500 | V/ μs | |
| Test Voltage | UT 1 | 1400 | VDC | 10 s |
| Operating Temperature | | -40 / + 85°C | | |
| Estimated Lifecycle | | 100'000 | h. | Un DC - 70°C |

| Dimension | Symbol | Values | Unit | Conditions |
|--------------|---------|--------|------|------------|
| Max diameter | D | 43 | mm | |
| Length | L | 40 | mm | |
| Connections | Inserts | M5 x 6 | mm | |

| | | | |
|--------------|----------|---------|--|
| M2 | | | |
| M1 | | | |
| M0 | 06.05.02 | 289/JJH | |
| Modification | Date | Author | |

Condensateurs CH 1400 Yverdon, Switzerland

Kondensatoren Tel.: +41 24 445 66 88

Capacitors Fax: +41 24 445 66 89

Lectanche
 Capacitors
A FUCHS & HUBBARD COMPANY

289

12.01.01

PPM3665.XLS