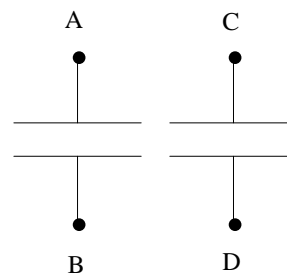
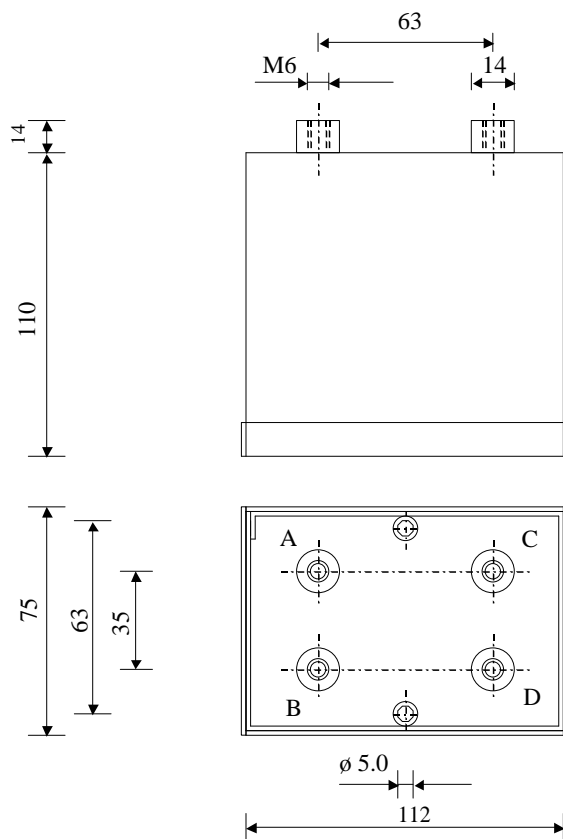


#5581

Metallized polypropylene capacitors

PPM 60-2x10.0 r K



Dielectric of metallized polypropylene

Threaded outputs

Resin end sealing

Aluminium case thick 1.2 mm

Parameter	Symbol		Value	Unit	Condition
Capacitance	C	2 x	10	μF	1 V / 1 kHz
Tolerance			± 10	%	
Rated voltage	Un DC		600	VDC	
Rated voltage	Un AC		400	Veff	50 Hz to 2000 Hz
RMS Current	Ieff max	2 x	60	Aeff	7 kHz to 100 kHz
slope of voltage variation	du/dt max.		350	V/ μsec	max. repetitive
Repetitive surge current	I cr. max	2 x	3500	A	
Tangente delta	tg δ		4	10^{-4}	1 V / 1 kHz
Equivalent serie resistance	ESR	2 x	≤ 1.0	m Ω	10 kHz
Stray inductance	ESL		≤ 40	nH	
Insulation resistance	Ri x C		$> 20'000$	s	500 VDC - 1 min
Test voltage between terminals	U T1		840	VDC	10 s
Test voltage between terminals to case	U T2		2'500	VAC	1 min
Operating temp.			- 25 / + 70 °C		
Estimated operational life (-3%)			200'000	h	Un DC / 70°C

Dimension	Symbol		Value	Unit	Conditions
Width	B		75	mm	
Length	L		112	mm	
Height	H		110	mm	
Thread			M6 x 10	mm	
Thread spacing			35	mm	
	M1				
	M0				
	Modification	Date	Visa émetteur		

Condensateurs
Kondensatoren
Capacitors

CH 1401 Yverdon-les-Bains
Tel.: ++41 24 445 66 88
Fax: ++41 24 445 66 89

Le lanché
Capacitors
A FISCHER & TALECHÉ COMPANY

HJJ

12.07.2006

faisab5581.XLS