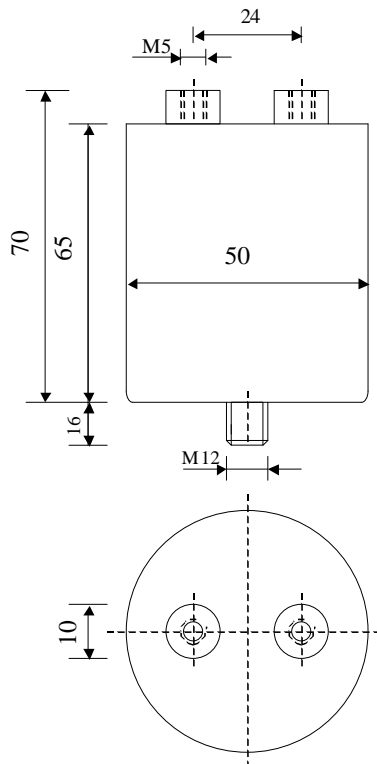


#5853

METALLIZED POLYPROPYLENE CAPACITORS

PPM 6-100.0 cv6 K



Dielectric of metallized polypropylene

Threaded outputs

Polyurethan resin end sealing

Aluminium case

Parameter	Symbol	Value	Unit	Condition
Capacitance	C	100	$\mu\text{F}$	1 V / 1 kHz
Tolerance		$\pm 10$	%	
Rated voltage	Un DC	63	VDC	
RMS Current	I <sub>eff max.</sub>	50	A <sub>eff</sub>	20 kHz
Repetitive surge current	I <sub>cr. max.</sub>	1000	A	
Tangent delta	tg $\delta$	$\leq 10$	$10^{-4}$	1 V / 1 kHz
Equivalent serie resistance	ESR	$\leq 1.2$	m $\Omega$	1 V / 10 kHz
Stray inductance	ESL	$\leq 50$	nH	
Insulation resistance	Ri x C	$\geq 10'000$	s	50 VDC - 1 min
Test voltage between terminals	U T1	100	VDC	10 s
Test voltage terminals to case	U T2	2500	VAC	50 Hz / 1 min
Climatic category		27/70/56		
Estimated operational life (-5 %)		$> 160'000$	h	Un DC / 70 °C
Dimension	Symbol	Value	Unit	Conditions
Diameter	D	50	mm	
Height	H	65	mm	
Terminals				
Thread		M5 x 10	mm	
Thread spacing	e	24	mm	
Fixing stud		M12 x 16	mm	
	M1			
	M0			
	Modification	Date	Visa émetteur	

Condensateurs CH 1400 Yverdon-les-Bains  
 Kondensatoren Tel.: ++41 24 447 22 82  
 Capacitors Fax: ++41 24 447 22 85

**Le lanché**  
**Capacitors**  
A FISCHER & FAUSCHÉ COMPANY

HJJ

17.09.2009

faisab5853.XLS