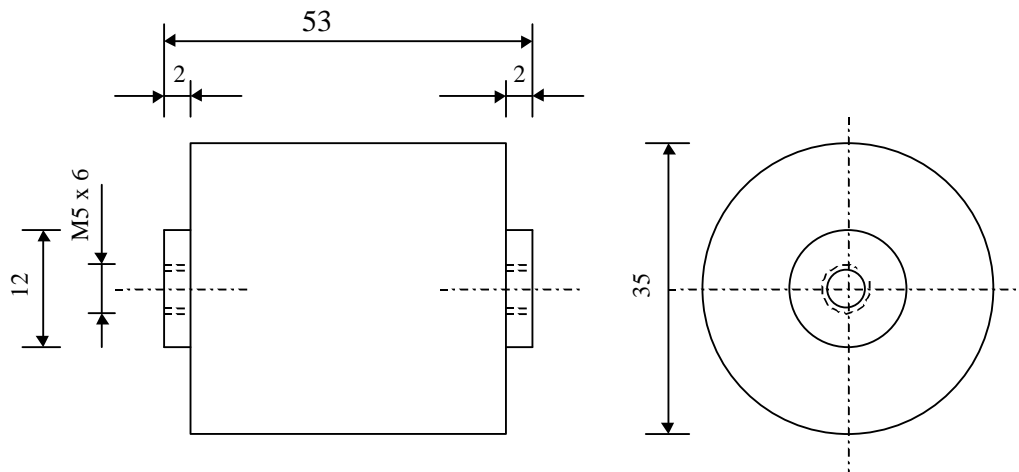


# 5345

Discharge capacitors

TYPE  
PPM 220-044 dv III

Dielectric of metallized polypropylene

Polyester wrapped

Epoxy resin end sealing

Parameter	Symbol	Value	Unit	Condition
Capacitance	C	440	nF	20°C, 1 kHz
Tolerance		10	%	
Rated voltage	Un DC	2200	VDC	
Rated voltage	Un AC	1200	VAC	
RMS current max	I eff	12	A eff	f > 3620 Hz
Slope of voltage variation	du/dt max.	1364	V/μs	max. repetitive
Repetitive surge current	I cr. max	600	A eff	max. repetitive
Power loss factor	tgδ	≤ 3 E-4		1 V / 1 kHz / 25 °C
Equivalent serie resistance	ESR	≤ 7.5	mΩ	1 V - 10 kHz
Stray inductance	ESL	≤ 30	nH	
Insulation resistance	Ri x C	> 10'000	s	500 VDC - 1 min
Test voltage between terminals	U T1	3520	VDC	10 s.
Climatic category		25/70/56		
Estimated operational life (-3%)		1'000'000'000	pulses	2200 V p-p / 600 A cr.

Dimension	Symbol	Value	Unit	Conditions
Diameter	∅ D	35	mm	
Height	H	53	mm	
Terminals				
Thread		M5 x 10	mm	
	M2			
	M1			
	M0			
	Modification	Date	Author	

Condensateurs CH 1401 Yverdon, Switzerland  
 Kondensatoren Tel.: +41 24 445 66 88  
 Capacitors Fax: +41 24 445 66 89

**Lecan**  
**ché**  
**Capacitors**  
LA SOCIÉTÉ SUISSE DES CONDENSATEURS

289

06.02.03

faisab5345.XLS