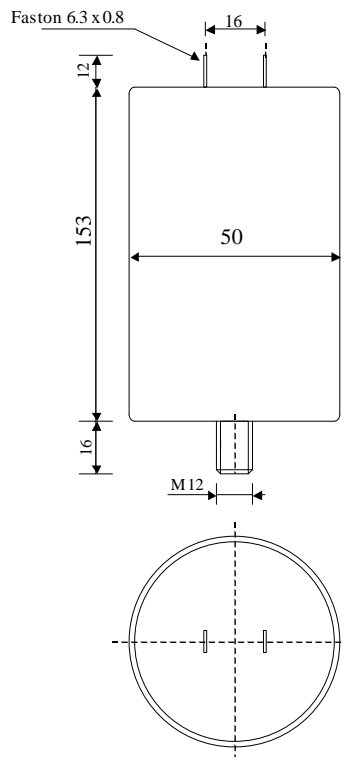


#5469

METALLIZED POLYPROPYLENE CAPACITORS

PPM 150-30.0 cv2 K



Dielectric of metallized polypropylene

FAST-ON 6.3 x 0.8 mm

Epoxy resin end sealing

Aluminium case

Parameter	Symbol	Value	Unit	Condition
Capacitance	C	30	$\mu\text{F}$	1 V / 1 kHz
Tolerance		$\pm 10$	%	
Rated voltage	Un DC	1500	VDC	
Rated voltage	Un AC	450	VAC	50 to 250 Hz
RMS Current	I <sub>eff max.</sub>	14	A <sub>eff</sub>	f > 400 Hz
slope of voltage variation	du/dt max.	20	V/ $\mu\text{sec}$	max. repetitive
Repetitive surge current	I cr. max	600	A	
Tangente delta	tg $\delta$	$\leq 57$	$10^{-4}$	1 V / 1 kHz
Equivalent serie resistance	ESR	30	m $\Omega$	1 V / 10 kHz
Stray inductance	ESL	$\leq 200$	nH	
Insulation resistance	Ri	> 670	M $\Omega$	300 VDC - 1 min
Test voltage between terminals	U T1	2250	VDC	10 s
Climatic category		40/85/56		
Dimension	Symbol		Unit	Conditions
Diameter	D	50	mm	
Heigth	H	153	mm	
Terminals				
fast-on		6.3 x 0.8	mm	
fixing stud		M12 x 16	mm	
	M1			
	M0			
	Modification	Date	Visa émetteur	

Condensateurs CH 1401 Yverdon-les-Bains  
 Kondensatoren Tel.: ++41 24 447 22 82  
 Capacitors Fax: ++41 24 447 22 85

**Le lanché**  
**Capacitors**  
A FISCHER & TAUERNIG COMPANY

289

28.01.2005

faisab5469.XLS