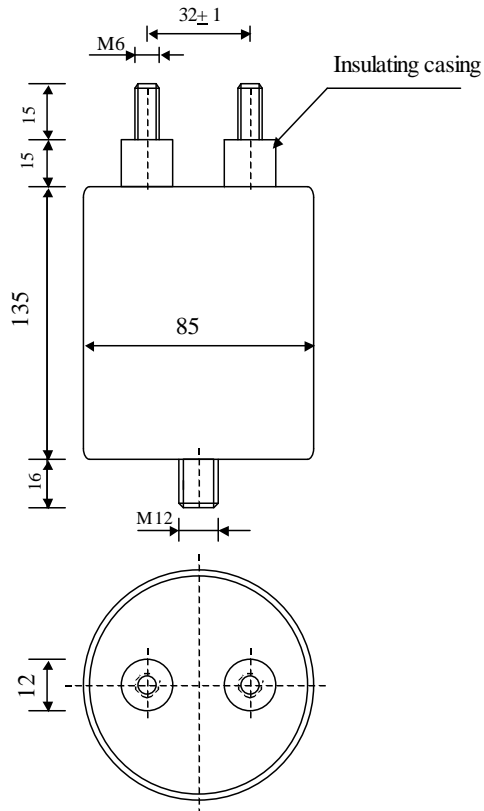


#5756

METALLIZED POLYPROPYLENE CAPACITORS

PPM 120-200.0 cv5 K



Dielectric of metallized polypropylene

Threaded outputs

Resin end sealing

Aluminium case

Parameter	Symbol	Value	Unit	Condition
Capacitance	C	200	μF	1 V / 1 kHz
Tolerance		± 5	%	
Rated voltage	Un DC	1200	VDC	
Rated voltage	Un AC	250	VAC	50 Hz - 100 Hz
RMS Current permanent	I _{eff max.}	25	A _{eff}	1 kHz - 10 kHz
Repetitive surge current	I _{cr. max}	1200	A	
Tangent delta	tgδ	≤ 85	10 ⁻⁴	1 V / 1 kHz
Equivalent serie resistance	ESR	7	mΩ	1 V / 10 kHz
Stray inductance	ESL	≤ 120	nH	
Insulation resistance	R _i x C	≥ 30'000	s	300 VDC - 1 min
Test voltage between terminals	U _{T1}	1800	VDC	10 s
Test voltage terminals to case	U _{T2}	2500	VAC	50 Hz / 1 min
Climatic category		27/70/56		
Estimated operational life (-5 %)		> 100'000	h	Un DC
Dimension	Symbol		Unit	Conditions
Diameter	D	85	mm	
Height	H	135	mm	
Terminals				
Thread		M6 x 15	mm	
Thread spacing	e	32	mm	
Fixing stud		M12 x 16	mm	
	M1			
	M0			
	Modification	Date	Visa émetteur	

Condensateurs CH 1400 Yverdon-les-Bains
 Kondensatoren Tel.: ++41 24 445 66 88
 Capacitors Fax: ++41 24 445 66 89

Le Janché
Capacitors
A FROBENIUS & FAUDSCHER COMPANY

HJJ

06.10.2008

faisab5756.XLS