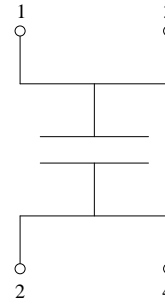
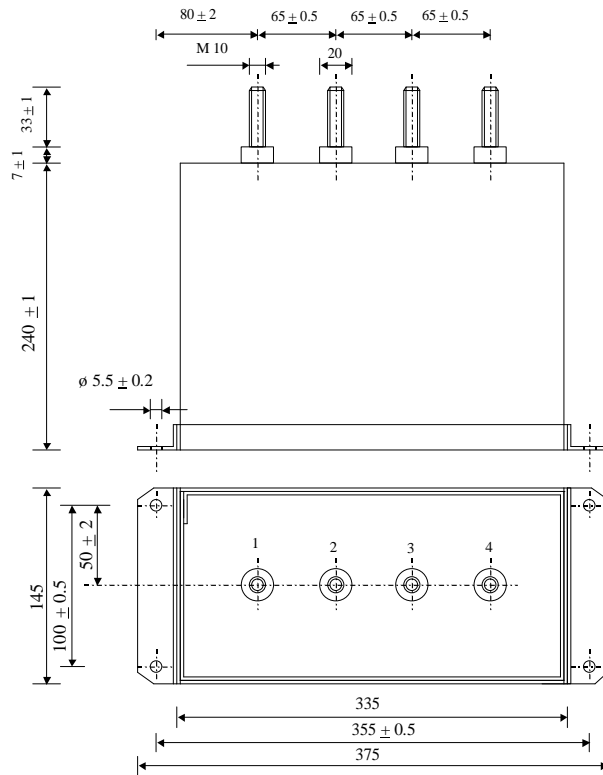


#5535

## Filtering Capacitors

PPM 110-4300.0 r K



Dielectric of metallized polypropylene

Threaded outputs

Resin end sealing

Aluminium case  
thick 1.2 mm

Parameter	Symbol		Value	Unit	Condition
Capacitance	C		4300	$\mu\text{F}$	1 V / 1 kHz
Tolerance			$\pm 10$	%	
Rated voltage	Un DC		1'100	VDC	
Maximum voltage	Us max.		1'250	V	non. rep.
RMS Current	Ieff max		300	Aeff	
Tangente delta dielectric	tg $\delta_o$		2	$10^{-4}$	
Serie resistance	RS		$\leq 0.52$	m $\Omega$	
Thermal resistance	Rth		1.1	$^{\circ}\text{C} / \text{W}$	hot spot - ambient
Stray inductance	ESL		$\leq 40$	nH	
Insulation resistance	Ri x C		$> 20'000$	s	500 VDC - 1 min
Test voltage between terminals	U T1		1'650	VDC	10 s
Test voltage between terminals to case	U T2		3'500	VAC	10 s
Climatic category (IEC 60068)			40/85/56		
Estimated operational life (-3%)			80'000	h	Un DC / 70 $^{\circ}\text{C}$

Dimension	Symbol		Unit	Condition
Width	B		145	mm
Length	L		335	mm
Height	H		240	mm
Thread			4 x M 10 x 33	mm
Thread spacing			65	mm

	M1			
	M0	04.04.2006	HJJ	
	Modification	Date	Visa émetteur	

Condensateurs CH 1401 Yverdon-les-Bains  
 Kondensatoren Tel.: ++41 24 445 66 88  
 Capacitors Fax: ++41 24 445 66 89

**Le lanché**  
**Capacitors**  
A FISCHER & TAUER COMPANY

HJJ

27.02.2006

faisab5535.XLS