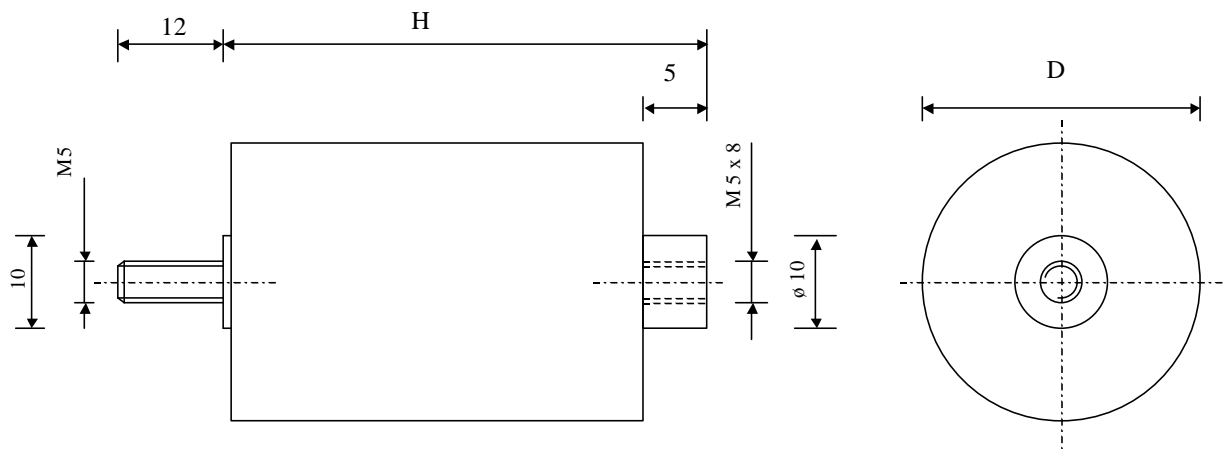


#5976


HIGH VOLTAGE METALLIZED CAPACITORS

PPM 1000-125 dv K



Dielectric of metallized polypropylene - Plastic sleeve

Epoxy resin end sealing - Threaded outputs

Parameter	Symbol	Value	Unit	Condition	
Capacitance	C	25	nF	1 V / 1 kHz	
Tolerance		± 10	%		
Rated voltage	Un DC	10000	VDC		
Rated voltage	Un AC	1200	Veff	50 Hz	
slope of voltage variation	du/dt max.	2'650	V/μsec	max. repetitive	
RMS current	I RMS max.	1.9	Aeff	10 kHz	
Tangent delta	tgδ	< 5	10-4	1 V / 1 kHz	
Tangent delta	tgδ	< 3.0	10-4	1 V / 10 kHz	
Stray inductance	ESL	≤ 30	nH		
Insulation resistance	Ri	> 100'000	MΩ	500 VDC - 1 min	
Test voltage between terminals	U T1	16'000	VDC	60 s	
Operating temp.		- 40 / + 85 °C			
Estimated operational life (-3%)		100000	h	Un DC / 70°C	
Dimension	Symbol	Value	Unit	Conditions	
Diameter	D	25	mm		
Height	H	70	mm		
Terminals					
Streaded studs ( 1 x )		M5 x 8	mm		
Screw ( 1 x )		M 5 x 12	mm		
	M1				
	M0				
	Modification	Date	Visa émetteur		
Condensateurs	CH 1400 Yverdon, Switzerland				
Kondensatoren	Tel.: ++41 24 445 66 88			www.Lcap.ch	capinfo@Lcap.ch
Capacitors	Fax: ++41 24 445 66 89			11.11.2010	faisab5976.XLS

HJJ