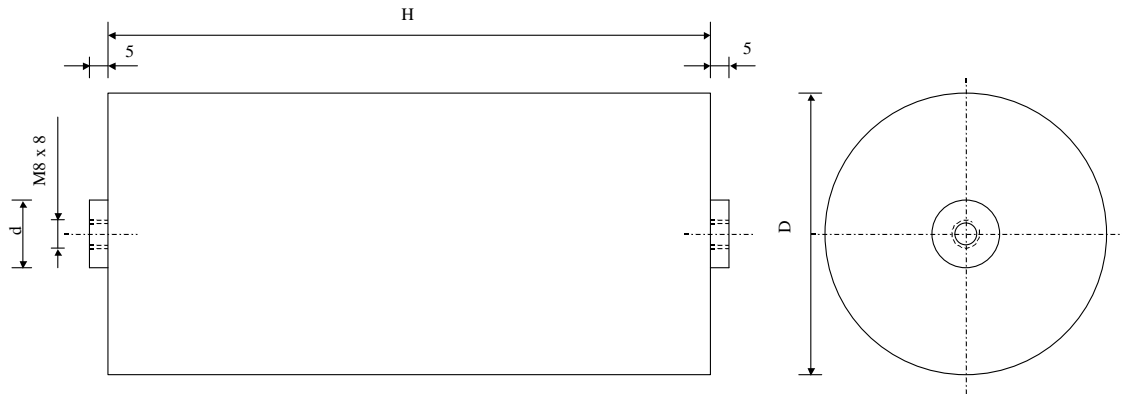


#5751

Discharge capacitors

PAMF 1100-1.0 uv K

Preliminary
Data Sheet

Dielectric of metallized polypropylene - Plastic tube

Polyurethane resin end sealing - Threaded outputs

Parameter	Symbol	Value	Unit	Condition
Capacitance	C	1	μF	1 V / 1 kHz
Tolerance		± 10	%	
Rated voltage	Un DC	20'000	VDC	
Rated voltage	Un AC	11'000	VAC	
Surge Voltage	Us max	25'000	VDC	
Repetitive surge current	I cr. max	15'000	A	
Tangent delta	$\text{tg}\delta$	7	10 ⁻⁴	1 V / 1 kHz
Equivalent serie resistance	ESR	≤ 50	m Ω	10 kHz
Stray inductance	ESL	≤ 1000	nH	
Insulation resistance	Ri x C	$> 20'000$	s	500 VDC - 1 min
Test voltage between terminals	U T1	45'000	VDC	60 s
Estimated operational life		1'000	Pulses	11 kVAC / 15 kA

Dimension	Symbol	Value	Unit	Conditions
Diameter	$\varnothing D$	110	mm	
Height	H	615	mm	
Terminals				
Thread		M8 x 8	mm	
	$\varnothing d$	22		
	M1			
	M0			
Modification	Date	Visa émetteur		

Condensateurs CH 1400 Yverdon-les-Bains
 Kondensatoren Tel.: ++41 24 445 66 88
 Capacitors Fax: ++41 24 445 66 89

Le lancé
Capacitors
A FISCHER & MAURICE COMPANY

HJJ

10.09.2008

faisab5751.XLS