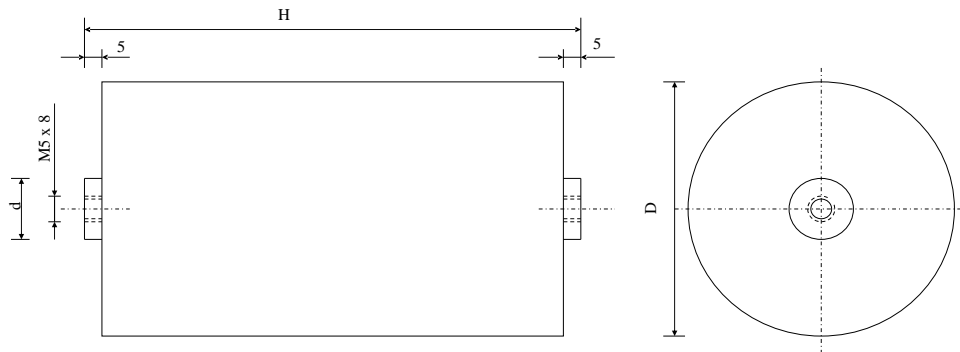


#6228

METALLIZED POLYPROPYLENE CAPACITORS

PAM 660-250 μV K

Dielectric of metallized polypropylene - Plastic tube
resin end sealing - Threaded outputs

Parameter	Symbol		Value	Unit	Condition
Capacitance	C		5.0	nF	1 V / 1 kHz
Tolerance			± 10	%	
Rated voltage	Un AC		6600	VRMS	50 Hz to 100 Hz
Rated voltage	Un DC		20'000	VDC	
slope of voltage variation	du/dt max.		15'000	V/ μsec	max. repetitive
Repetitive surge current	I cr. max		75	A	
Tangent delta	tg δ		≤ 5	10^{-4}	1 V / 1 kHz
Tangent delta	tg δ		≤ 6	10^{-4}	1 V / 10 kHz
Stray inductance	ESL		≤ 250	nH	
Test voltage between terminals	U T1		30'000	VDC	10 s.
Operating Temperature			-25 to + 70	$^{\circ}\text{C}$	
Dimension	Symbol			Unit	Conditions
Diameter	D		40	mm	
Height	H		195 ± 0.5	mm	
Terminals					
Thread			M5 x 8	mm	
	$\varnothing d$		10	mm	
	M1				
	M0				
	Modification	Date	Visa émetteur		

Condensateurs CH 1400 Yverdon, Switzerland
Kondensatoren Tel.: ++41 24 445 66 88
Capacitors Fax: ++41 24 445 66 89

Leclanché
Capacitors
A FISCHER & TAUSSIG COMPANY

HJJ

www.Lcap.ch
21.11.2013

capinfo@Lcap.ch
faisab6228.XLS