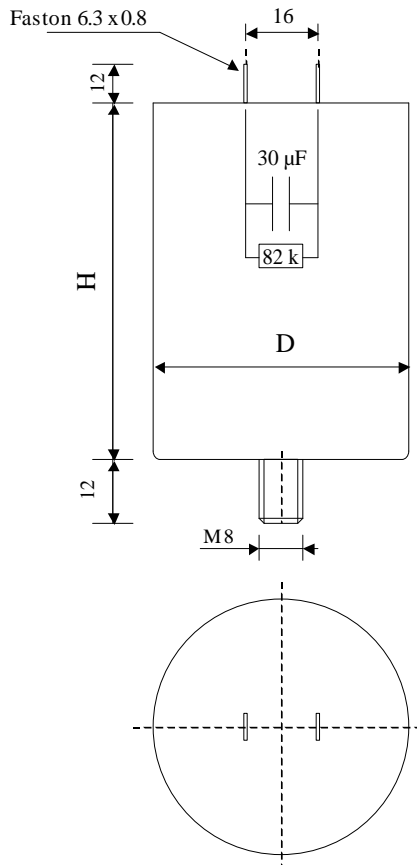


#6055

METALLIZED POLYPROPYLENE CAPACITORS

PAM 33-30.0 cvs2 K



Dielectric of metallized polypropylene

FAST-ON 6.3 x 0.8 mm

Epoxy resin end sealing

Aluminium case

Parameter	Symbol	Value	Unit	Condition
Capacitance	C	30	µF	1 V / 1 kHz
Tolerance		± 10	%	
Rated voltage	Un AC	330	VAC	50Hz to 60 Hz
Parallel resistor	RP	82	kΩ	1 V / 1 kHz
slope of voltage variation	du/dt max.	18	V/µsec	max. repetitive
Repetitive surge current	I cr. max	540	A	
Tangent delta	tgδ	≤ 6	10 ⁻⁴	1 V / 100 Hz
Equivalent serie resistance	ESR	15	mΩ	1 V / 10 kHz
Stray inductance	ESL	≤ 100	nH	
Test voltage between terminals	U T1	390	VAC	50 Hz / 10 s
Test voltage terminals to case	U T2	2500	VAC	50 Hz / 1 min
Operating Temperature		-40 to + ε	°C	

Dimension	Symbol	Value	Unit	Conditions
Diameter	D	40	mm	
Height	H	96	mm	
Terminals				
fast-on		6.3 x 0.8	mm	
fixing stud		M8 x 12	mm	
	M1			
	M0			
	Modification	Date	Visa émetteur	

Condensateurs CH 1400 Yverdon, Switzerland
 Kondensatoren Tel.: ++41 24 445 66 88
 Capacitors Fax: ++41 24 445 66 89

Leclanché
Capacitors
A FISCHER & TALSCHER COMPANY

HJJ

www.Lcap.ch
 27.10.2011

capinfo@Lcap.ch
 faisab6055.XLS