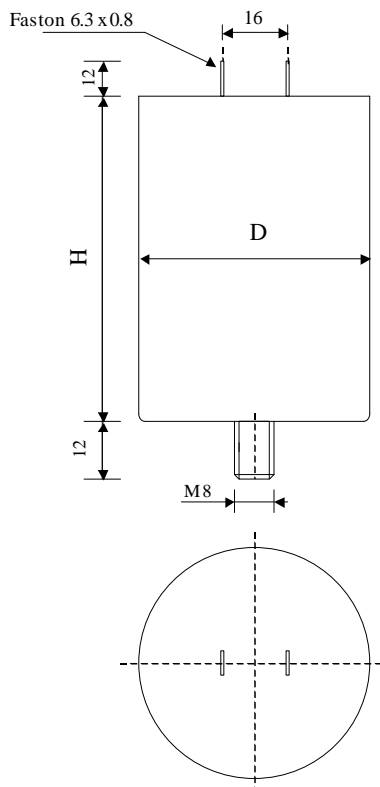


#6044

METALLIZED POLYPROPYLENE CAPACITORS

PAM 33-10.0 cv2 K



Dielectric of metallized polypropylene

FAST-ON 6.3 x 0.8 mm

Epoxy resin end sealing

Aluminium case

Parameter	Symbol	Value	Unit	Condition
Capacitance	C	10	$\mu\text{F}$	1 V / 1 kHz
Tolerance		$\pm 10$	%	
Rated voltage	Un AC	330	VAC	50Hz to 400 Hz
RMS Current	I <sub>eff max.</sub>	15	A <sub>eff</sub>	5 kHz to 50 kHz
slope of voltage variation	du/dt max.	50	V/ $\mu\text{sec}$	max. repetitive
Repetitive surge current	I cr. max	500	A	
Tangent delta	tg $\delta$	$\leq 8$	$1\text{C}^4$	1 V / 1 kHz
Equivalent serie resistance	ESR	8	m $\Omega$	1 V / 10 kHz
Stray inductance	ESL	$\leq 100$	nH	
Insulation resistance	Ri	> 2000	M $\Omega$	300 VDC - 1 min
Test voltage between terminals	U T1	1000	VDC	10 s
Test voltage terminals to case	U T2	3500	VAC	50 Hz / 1 min
Climatic category		25/70/56		
Estimated operational life (-3%)		70'000	h	Un AC / 70°C / 50 Hz
Dimension	Symbol		Unit	Conditions
Diameter	D	40	mm	
Height	H	80	mm	
Terminals				
fast-on		6.3 x 0.8	mm	
fixing stud		M8 x 12	mm	
	M1			
	M0			
	Modification	Date	Visa émetteur	

Condensateurs CH 1400 Yverdon, Switzerland  
 Kondensatoren Tel.: ++41 24 445 66 88  
 Capacitors Fax: ++41 24 445 66 89

**Leclanché**  
**Capacitors**  
A FISCHER & TALSCHER COMPANY

HJJ

www.Lcap.ch  
 12.09.2011

capinfo@Lcap.ch  
 faisab6044.XLS