



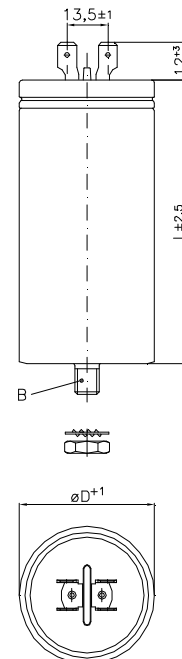
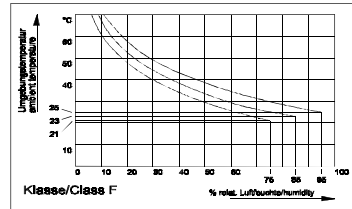


Applications	MKP - AC Capacitor for Lighting, Motors and General Use	
Code	PAM 28-100.0 cv2d (J)	
Reference Standards	ENEC / VDE DIN EN 61048 : 2006, DIN EN 61049 VDE 560 # 61 + 62 280 V~, 50/60 Hz	VDE IEC / DIN EN 60252-1 VDE 560-8 300 V~, 50/60 Hz GPFNT 10,000 h (B) 40/85/21 (IEC 68)
Approval marks	  	UL810 / UL840  UL recognized component for USA and Canada 300V~, 50/60 Hz, -25 °C...+90 °C (≤50µF), AFC 10,000 A 300V~, 50/60 Hz, -25 °C...+85 °C (>50µF), AFC 10,000 A File E211978
Rated values	Rated capacitance 100.0 µF Tolerance of capacitance ± 5 % Rated voltage 300 V~, 280 V~ Rated frequency 50/60 Hz Temperature range -40 °C to +100 °C, -40 °C to +85 °C (>50 µF)	
Application class	GPFNT / GMFNT	
Service life / (class)	10,000 h (B)	
Type	P2 (B)	
Test class	40/85/21 (IEC 68)	
Limit values of relative humidity	class F according DIN 40 040	
Condensation	not permitted	
Test voltage	between terminals (2.15 · U _N) V~ between terminals and case 3,000 V~	
Construction	Terminal dual tab connectors - 6.3 x 0.8 mm - DIN 46 244 Case aluminium (DIN 41 116) (DIN 40 011) with base mounting stud washer - DIN 6797 nut - based on ISO 4035 max. fixing torque 7 Nm Protection break action mechanism Discharge resistor none Filling material based on vegetable oil, non-PCB, viscous	
Mounting position	optional	
Dimensions	Diameter D = 60 mm Length L = 124 mm Tab connector jut out over case (12 + 3) mm Base mounting stud B: M 12 x 16 mm	



Prolongation of case by up to 10 mm has to be considered for the event of overload (action of the overpressure mechanism and electrical disconnection).