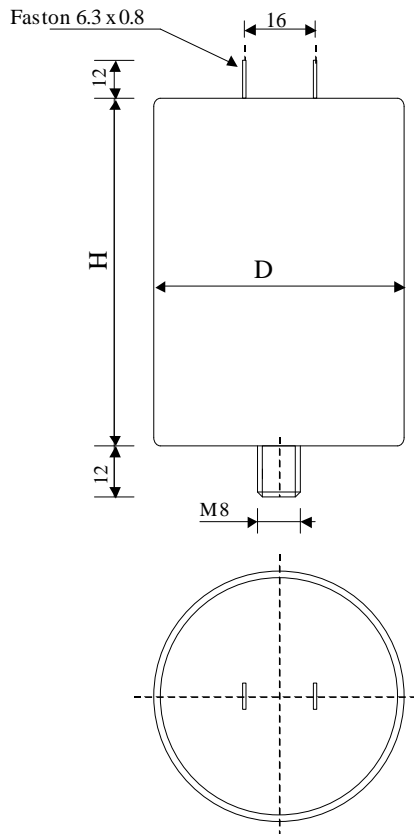


#6162

METALLIZED POLYPROPYLENE CAPACITORS

PAM 250-010 cv2 K



Dielectric of metallized polypropylene

FAST-ON 6.3 x 0.8 mm

Epoxy resin end sealing

Aluminium case

Parameter	Symbol	Value	Unit	Condition
Capacitance	C	0.1	μF	1 V / 1 kHz
Tolerance		± 10	%	
Rated voltage	$U_n \text{ AC}$	2500	VAC	50Hz to 100 Hz
Surge voltage	U_s	4000	V	
slope of voltage variation	$du/dt \text{ max.}$	2500	V/ μsec	max. repetitive
Repetitive surge current	$I \text{ cr. max}$	2500	A	
Tangent delta	$\text{tg}\delta$	≤ 4	10^{-4}	1 V / 1 kHz
Tangent delta	$\text{tg}\delta$	≤ 6	10^{-4}	1 V / 10 kHz
Stray inductance	ESL	≤ 100	nH	
Test voltage between terminals	$U \text{ T1}$	5000	VDC	1 min
Test voltage terminals to case	$U \text{ T2}$	3500	VAC	50 Hz / 1 min
Operating Temperature		-25 to + ϵ	$^{\circ}\text{C}$	
Dimension	Symbol		Unit	Conditions
Diameter	D	45	mm	
Height	H	86	mm	
Terminals				
fast-on		6.3 x 0.8	mm	
fixing stud		M8 x 12	mm	
	M1			
	M0			
	Modification	Date	Visa émetteur	

Condensateurs CH 1400 Yverdon, Switzerland
 Kondensatoren Tel.: ++41 24 445 66 88
 Capacitors Fax: ++41 24 445 66 89

Leclanché
Capacitors
A FISCHER & TULSICH COMPANY

HJJ

www.Lcap.ch
 15.02.2013

capinfo@Lcap.ch
 faisab6162.XLS