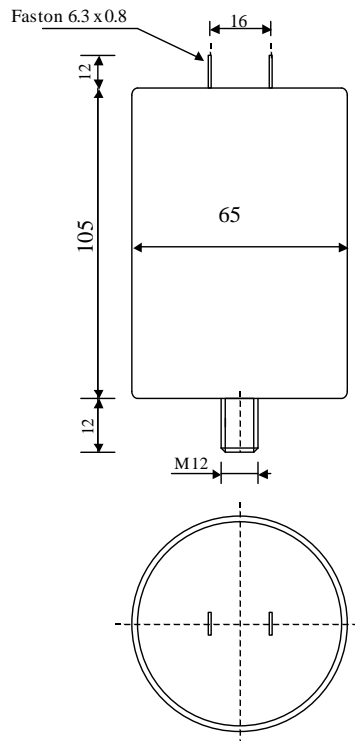


#5655

METALLIZED POLYPROPYLENE CAPACITORS

PAM 150-1.5 cv2 K



Dielectric of metallized polypropylene

FAST-ON 6.3 x 0.8 mm

Epoxy resin end sealing

Aluminium case

Parameter	Symbol	Value	Unit	Condition
Capacitance	C	1.5	μF	1 V / 1 kHz
Tolerance		± 10	%	
Rated voltage	Un AC	1500	VAC	50Hz to 800 Hz
RMS Current	$I_{\text{eff max.}}$	20	A _{eff}	$f > 3$ kHz
slope of voltage variation	$du/dt \text{ max.}$	70	V/ μsec	max. repetitive
Repetitive surge current	$I \text{ cr. max}$	1050	A	
Tangent delta	$\text{tg}\delta$	≤ 5	10^{-4}	1 V / 1 kHz
Equivalent serie resistance	ESR	6.5	$\text{m}\Omega$	1 V / 10 kHz
Stray inductance	ESL	≤ 130	nH	
Insulation resistance	Ri	$> 13'0000$	$\text{M}\Omega$	300 VDC - 1 min
Test voltage between terminals	U T1	5000	VDC	10 s
Test voltage terminals to case	U T2	2500	VAC	50 Hz / 1 min
Climatic category		25/70/56		
Estimated operational life (-3%)		30'000	h	Un AC / 70°C

Dimension	Symbol	Value	Unit	Conditions
Diameter	D	65	mm	
Height	H	105	mm	
Terminals				
fast-on		6.3 x 0.8	mm	
fixing stud		M12 x 12	mm	
	M1			
	M0			
	Modification	Date	Visa émetteur	

Condensateurs CH 1400 Yverdon-les-Bains
 Kondensatoren Tel.: ++41 24 445 66 88
 Capacitors Fax: ++41 24 445 66 89

Le Janché
Capacitors
A FISCHER & TAUSSIG COMPANY

HJJ

12.04.2007

faisab5655.XLS