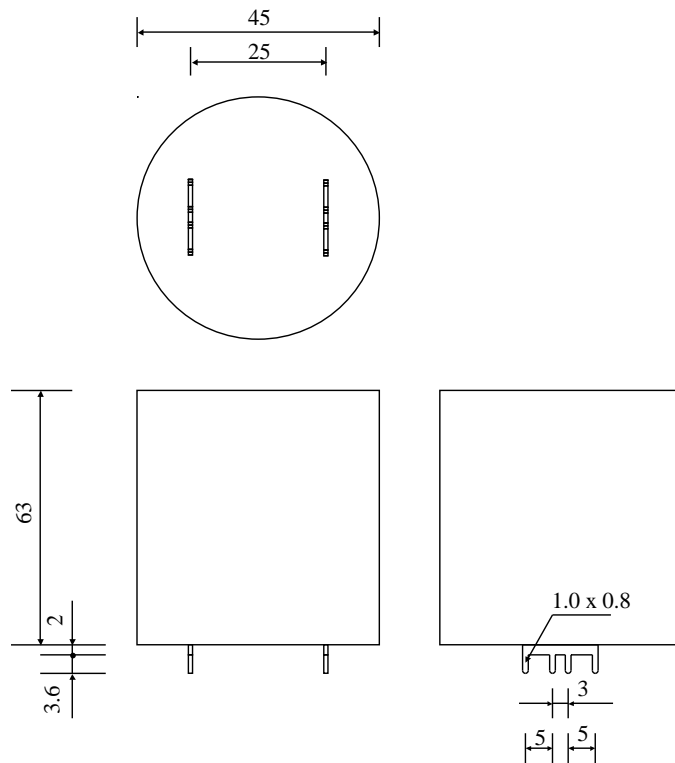


#5730

Power Electronics Capacitors

MKS 40-15.0 ci5 K



Dielectric of metallized polyphenylene sulfide

Resin end sealing

Aluminium case

Terminals for connection to Printed Circuit Board

| Parameter | Symbol | | Value | Unit | Condition |
|--------------------------------|--------------|------------|-----------------|--------------------|-----------------|
| Capacitance | C | | 15 | μF | 1 V / 1 kHz |
| Tolerance | | | ± 10 | % | |
| Rated voltage | Un DC | | 400 | VDC | 115°C |
| RMS current | I RMS max. | | 14 | Aeff | 20 kHz |
| slope of voltage variation | du/dt max. | | 20 | V/ μsec | max. repetitive |
| Repetitive surge current | I cr. max | | 300 | A | |
| Tangent delta | tg δ | | ≤ 15 | 10^{-4} | 1 kHz |
| Equivalent serie resistance | ESR | | ≤ 7 | m Ω | 10 kHz |
| Stray inductance | ESL | | ≤ 70 | nH | |
| Insulation resistance | Ri | | > 600 | M Ω | 100 VDC - 1 min |
| Test voltage between terminals | U T1 | | 1000 | VDC | 10 s |
| Operating temperature | | | - 40 / + 115 °C | | |
| | | | | | |
| Dimension | Symbol | | | Unit | Conditions |
| Diameter | | | 45 | mm | |
| Height | | | 63 | mm | |
| Terminals | | | | | |
| Tinned-copper | (8 x) | | 1.2 x 0.9 | mm | |
| | | | | | |
| | | | | | |
| | M1 | | | | |
| | M0 | 21.01.2009 | HJJ | | |
| | Modification | Date | Visa émetteur | | |

Condensateurs CH 1400 Yverdon-les-Bains
 Kondensatoren Tel.: ++41 24 445 66 88
 Capacitors Fax: ++41 24 445 66 89

Le lanché
Capacitors
A FRIGER & TASCHE COMPANY

HJJ

16.06.2008

faisab5730.XLS