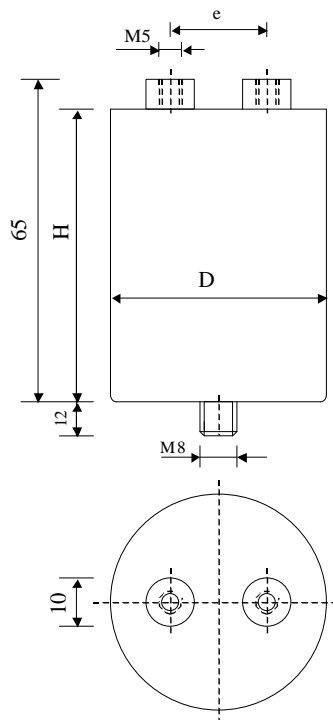


# 6121	Capacitor for power electronics	TYPE KPS 100-1.0 cv6 K
--------	---------------------------------	---------------------------



Dielectric  
Metallized polypropylene  
and film/foil

Threaded outputs

Epoxy resin end sealing

Aluminium case

Paramètre	Symbol	Value	Unit	Condition
Capacitance	C	1	μF	20°C, 1 kHz
Tolérance		10	%	
Rated voltage	Un DC	1'000	VDC	
Rated voltage	Un AC	400	VAC	50 / 60 Hz
RMS Current	I <sub>eff max.</sub>	20	A <sub>eff</sub>	f > 10 kHz
Slope of voltage variation	du/dt max.	400	V/μs	max. repetitive
Repetitive surge current	I cr. max	400	A	max. repetitive
Tangent delta	tgδ	< 3.5 E-4		1 V / 1 kHz
Equivalent serie resistance	ESR	≤ 6.4	mΩ	1 V - 10 kHz
Stray inductance	ESL	≤ 40	nH	
Insulation resistance	Ri	> 10'000	MΩ	500 VDC - 1 min
Test voltage between terminals	U T1	1'800	VDC	10 s.
Climatic category		25/70/56		
Estimated operational life (-3 %)		100'000	h	Un DC / 70°C

Dimension	Symbole	Value	Unité	Conditions
Diameter	D	45	mm	
Height	H	60		
Terminals				
Thread		M5 x 8	mm	
Thread spacing	e	22 ± 0.5	mm	
fixing stud		M8 x 12	mm	

	M2			
	M1			
	M0			
	Modification	Date	Visa émetteur	