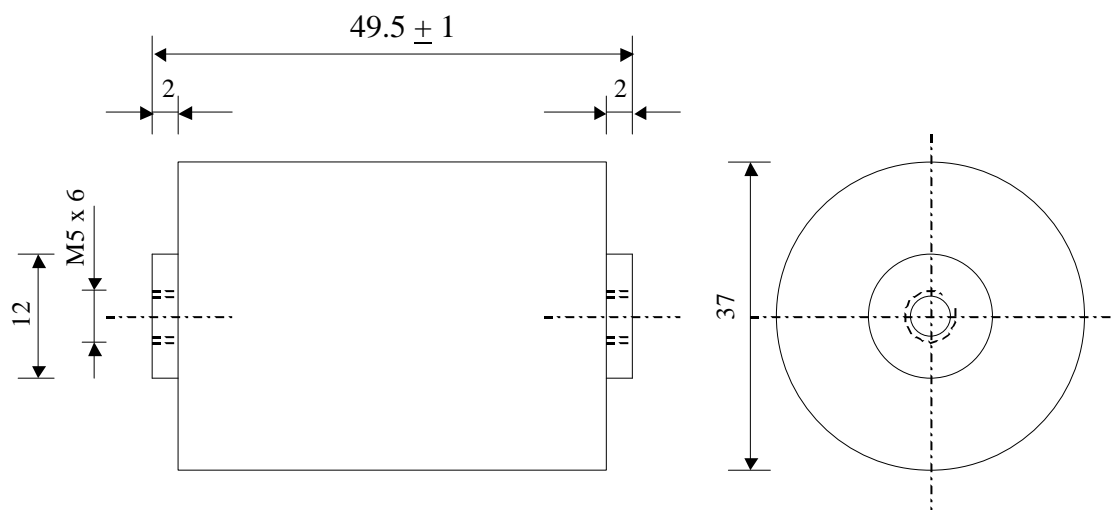


5625

FILM-FOIL CAPACITORS

TYPE
KP 350-147 dv K

Dielectric of polypropylene - Plastic sleeve

Epoxy resin end sealing - Threaded outputs

Paramètre	Symbol	Value	Unit	Condition
Capacitance	C	47	nF	20°C, 1 kHz
Tolérance		10	%	
Rated voltage	Un DC	3'500	VDC	
Rated voltage	Un AC	300	VAC	50 Hz to 200 kHz
RMS Current	I _{eff} max.	22	A _{eff}	f > 250 kHz
Tangente delta	tgδ	≤ 2.0 E-4		1 V / 10 kHz / 20 °C
Stray inductance	ESL	≤ 15	nH	
Insulation resistance	Ri	> 100'000	MΩ	100 VDC - 1 min
Test voltage between terminals	U T1	7'000	VDC	1 min
Climatic category		25/70/56		

Dimension	Symbole	Value	Unité	Conditions
Diameter	∅	37	mm	
Height	H	49.5	mm	
Terminals				
Thread		M5 x 6	mm	
	D1	12	mm	

Valeurs indicatives, sous réserve de modification	M2			
	M1			
	M0			
	Modification	Date	Visa émetteur	

Condensateurs CH 1401 Yverdon-les-Bains
 Kondensatoren Tel.: ++41 24 445 66 88
 Capacitors Fax: ++41 24 445 66 89

Le lanché
Capacitors
A FISCHER & TAUSSCH COMPANY

HJJ

10.01.2007

faisab5625.XLS