

Application:

**DC capacitor for general use in power electronics
also for nonsinusoidal voltages and currents**

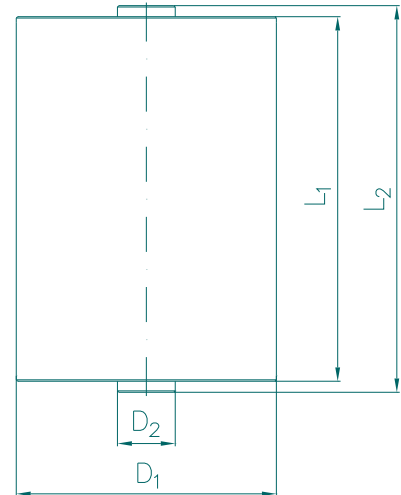
Standards:

acc. to IEC 61071:2007

Characteristics

Rated capacitance	C_N	1 μF ±10%
Rated d.c. voltage	U_{NDC}	15000 V
Max. ripple voltage	U_r	3600 V
Non-recurrent surge voltage	u_s	22500 V
Rated energy	W_N	112.5 Ws
Maximum current	I_{max}	15 A
Maximum peak current	I[^]	0.49 kA
Maximum surge current	I_s	1.47 kA
Series resistance	R_s	15.1 mΩ
Tangent of the loss angle	tanδ_o	2 x 10 ⁻⁴
Self discharge time const.	C x R_{is}	10000 s
Self-inductance	L_e	100 nH

outline drawing



Thermal conditions

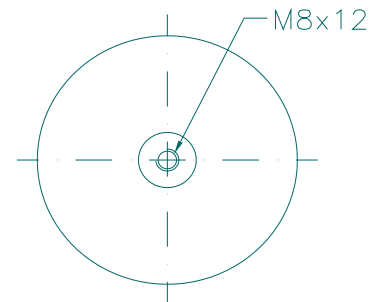
Lowest operating temperature	Θ_{min}	-25 °C
Maximum operating temperature	Θ_{max}	70 °C
Thermal resistance	R_{th}	4.1 kW
Storage temperature	Θ_{storage}	-40..+85 °C

Test data

Voltage test between terminals	U_{BB}	22500 V DC/10s
--------------------------------	-----------------------	----------------

failure rate

reference service life	100000 h
at Θ _{hotspot}	≤ 70 °C



Dimensions

Rated diameter	D₁	64 (±1) mm
Diameter of terminals	D₂	20 (±0.5) mm
Length of the case	L₁	285 (±2) mm
Total length	L₂	293 (±2) mm
Terminal		M8x12 mm
Clearance in air	L	329 mm
Creepage distance	K	329 mm

Approx weight

m	ca.	1 kg
----------	-----	------

Mechanical characteristics

Construction	MKP- metallized polypropylene capacitor, self-healing, plastic case
Fuse	without internal fuse, to be used only in uncritical environment
Terminals	Screw terminals
Impregnant	no liquid impregnants, filled with solidified PUR resin, non PCB
Fire load	38MJ

Maximum permissible voltage

(Maximum within one day)

30% of on-load duration	16500V
30min	17250V
5min	18000V
1min	19500V
100ms	22500V