

Applications

- Professional Applications
- Filters, tuned circuits
- Coupling / decoupling, audio
- Instrumentation

Main Characteristics

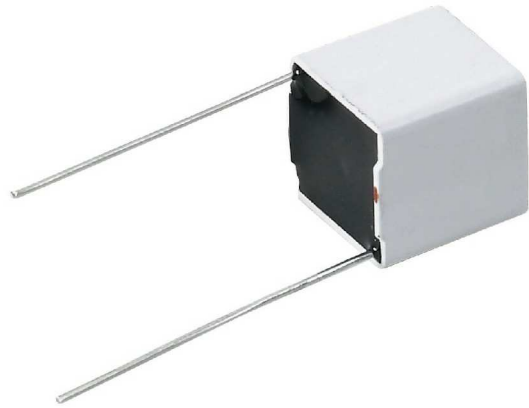
- Dry film-foil technology
- Climatic category: 55/085/56
- Tolerances $\pm 1\%$
on request : $\pm 10\%$, $\pm 5\%$, $\pm 2\%$

Design

- Metallized Polypropylene Film
- Self-extinguishing plastic housing
- Radial tinned copper leads
- Epoxy-resin end-seal (UL-V0)

Installation

- Indifferent Positioning



PPM...h

1.0 Rated Values and Operational Data

DC	Nominal Voltage U_N	$\leq 85^\circ\text{C}$	63	250
	Test Voltage U_T	1 min, 23°C	100	400
AC	Nominal Voltage U_{N-}	$\leq 85^\circ\text{C}$	40	180

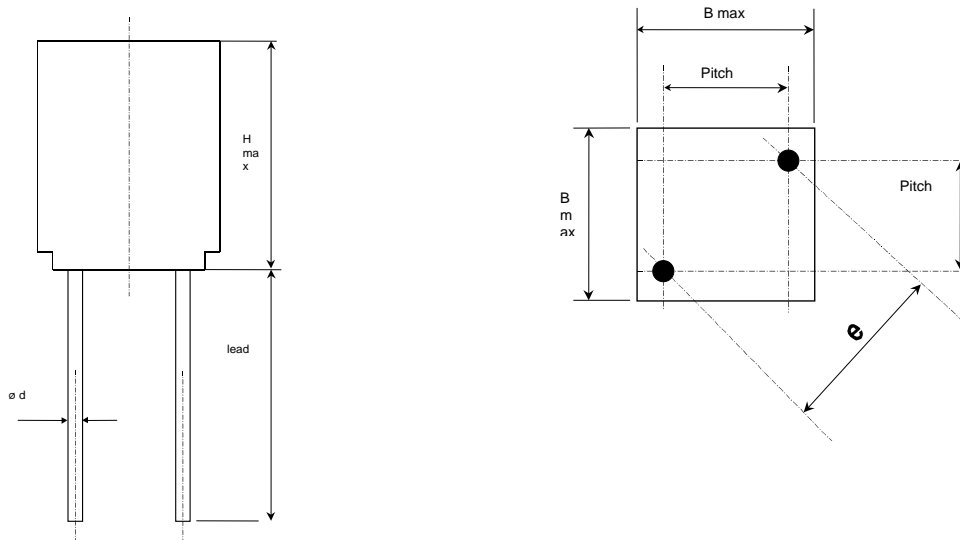
2.0 Capacitance Range

	Cn [nF]			Cn [nF]		Housing
63 VDC	10	75	250 VDC	3.3	39	A
	>75	150		>39	70	B
	>150	270		>70	150	C
	>270	560		>150	220	D

3.0 Characteristics

			Min	Typ	Max
Dissipation Factor	$\text{tg } \delta$	$C \leq 0.1 \mu\text{F}$			10×10^{-4}
	$f = 1 \text{ kHz}$	$C > 0.1 \mu\text{F}$			5×10^{-4}
Insulation Resistance	R_i [MOhms]	100 V, 1min, 23°C, HR 50%	1.0×10^5		
Temperature Coefficient	α_c	[ppm / °C]		$-200^{\pm 120}$	

4.0 Dimensions :



Dimensions in [mm]

Housing	Bmax	Hmax	Pitch	e	ø d	l lead
A	6.5	11	5.08	7.2	0.6	30
B	7.5	13	5.08	7.2	0.6	30
C	10	13	7.62	10.74	0.6	30
D	12.5	13	10.16	14.35	0.6	30

Capacitors are delivered in bulk. Taped product available on demand.

PPM ... h 63 VDC

B5F5	Type	Cn [μF]	Dimensions					
			Case	B [mm]	H [mm]	L [mm]	∅ lead [mm]	Pitch [mm]
1	PPM 6-110 h (F)	0.010	A	6.5	6.5	11.0	0.6	5.08
2	PPM 6-112 h (F)	0.012	A	6.5	6.5	11.0	0.6	5.08
3	PPM 6-115 h (F)	0.015	A	6.5	6.5	11.0	0.6	5.08
4	PPM 6-118 h (F)	0.018	A	6.5	6.5	11.0	0.6	5.08
5	PPM 6-122 h (F)	0.022	A	6.5	6.5	11.0	0.6	5.08
6	PPM 6-127 h (F)	0.027	A	6.5	6.5	11.0	0.6	5.08
7	PPM 6-133 h (F)	0.033	A	6.5	6.5	11.0	0.6	5.08
8	PPM 6-139 h (F)	0.039	A	6.5	6.5	11.0	0.6	5.08
9	PPM 6-147 h (F)	0.047	A	6.5	6.5	11.0	0.6	5.08
10	PPM 6-156 h (F)	0.056	B	7.5	7.5	13.0	0.6	5.08
11	PPM 6-168 h (F)	0.068	B	7.5	7.5	13.0	0.6	5.08
12	PPM 6-182 h (F)	0.082	B	7.5	7.5	13.0	0.6	5.08
13	PPM 6-010 h (F)	0.10	B	7.5	7.5	13.0	0.6	5.08
14	PPM 6-012 h (F)	0.12	B	7.5	7.5	13.0	0.6	5.08
15	PPM 6-015 h (F)	0.15	C	10.0	10.0	13.0	0.6	7.62
16	PPM 6-018 h (F)	0.18	C	10.0	10.0	13.0	0.6	7.62
17	PPM 6-022 h (F)	0.22	C	10.0	10.0	13.0	0.6	7.62
18	PPM 6-027 h (F)	0.27	D	12.5	12.5	13.0	0.6	10.16
19	PPM 6-033 h (F)	0.33	D	12.5	12.5	13.0	0.6	10.16
20	PPM 6-039 h (F)	0.39	D	12.5	12.5	13.0	0.6	10.16

PPM ... h 250 VDC

B5F5	Type	Cn [nF]	Dimensions					
			Case	B [mm]	H [mm]	L [mm]	∅ lead [mm]	Pitch [mm]
1	PPM 25-233 h (F)	3.3	A	6.5	6.5	11.0	0.6	5.08
2	PPM 25-239 h (F)	3.9	A	6.5	6.5	11.0	0.6	5.08
3	PPM 25-247 h (F)	4.7	A	6.5	6.5	11.0	0.6	5.08
4	PPM 25-256 h (F)	5.6	A	6.5	6.5	11.0	0.6	5.08
5	PPM 25-268 h (F)	6.8	A	6.5	6.5	11.0	0.6	5.08
6	PPM 25-282 h (F)	8.2	A	6.5	6.5	11.0	0.6	5.08
7	PPM 25-110 h (F)	10	A	6.5	6.5	11.0	0.6	5.08
8	PPM 25-112 h (F)	12	A	6.5	6.5	11.0	0.6	5.08
9	PPM 25-115 h (F)	15	A	6.5	6.5	11.0	0.6	5.08
10	PPM 25-118 h (F)	18	A	6.5	6.5	11.0	0.6	5.08
11	PPM 25-122 h (F)	22	A	6.5	6.5	11.0	0.6	5.08
12	PPM 25-127 h (F)	27	A	6.5	6.5	11.0	0.6	5.08
13	PPM 25-133 h (F)	33	A	6.5	6.5	11.0	0.6	5.08
14	PPM 25-139 h (F)	39	A	6.5	6.5	11.0	0.6	5.08
15	PPM 25-147 h (F)	47	B	7.5	7.5	13.0	0.6	5.08
16	PPM 25-156 h (F)	56	B	7.5	7.5	13.0	0.6	5.08
17	PPM 25-168 h (F)	68	B	7.5	7.5	13.0	0.6	5.08
18	PPM 25-182 h (F)	82	B	7.5	7.5	13.0	0.6	5.08
19	PPM 25-010 h (F)	100	B	7.5	7.5	13.0	0.6	5.08
20	PPM 25-012 h (F)	120	B	7.5	7.5	13.0	0.6	5.08
21	PPM 25-015 h (F)	150	B	7.5	7.5	13.0	0.6	5.08
22	PPM 25-018 h (F)	180	D	12.5	12.5	13.0	0.6	10.16
23	PPM 25-022 h (F)	220	D	12.5	12.5	13.0	0.6	10.16