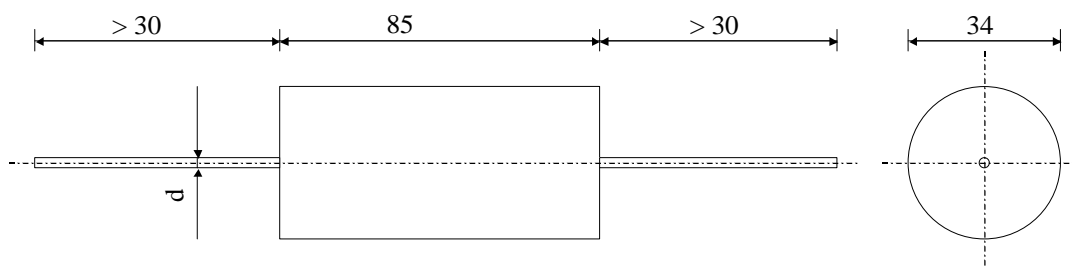


#5567

METALLIZED POLYPROPYLENE CAPACITORS

PPM 500-025 d K



Dielectric of metallized polypropylene

Plastic sleeve / Epoxy resin sealing

Parameter	Symbol		Value	Unit	Condition
Capacitance	C		0.25	$\mu\text{F}$	1 V / 1 kHz
Tolerance			$\pm 10$	%	
Rated voltage	Un DC		5000	VDC	
Rated voltage	Un AC		1250	Veff	50 Hz to 1 kHz
RMS Current	Ieff		6	Aeff	10 kHz
slope of voltage variation	du/dt max.		1200	V/ $\mu\text{sec}$	max. repetitive
Repetitive surge current	I cr. max		300	A	
Tangente delta	tg $\delta$		3	$10^{-4}$	1 V / 1 kHz
Tangente delta	tg $\delta$		7.5	$10^{-4}$	1 V / 10 kHz
Stray inductance	ESL		$\leq 80$	nH	
Insulation resistance	Ri		$> 50'000$	M $\Omega$	100 VDC - 1 min
Test voltage between terminals	U T1		$10'000$	VDC	10 s
Operating temp.			- 40 / + 85 °C		
Estimated operational life (-3%)			100000	h	Un DC - 70°C
Dimension	Symbol			Unit	Conditions
Diameter	$\emptyset$		34	mm	
Height	H		85	mm	
Terminals					
Axial tinned wire			$\emptyset 0.8$	mm	
	M1				
	M0				
	Modification	Date	Visa émetteur		

Condensateurs

CH 1401 Yverdon-les-Bains

Kondensatoren

Tel.: ++41 24 445 66 88

Capacitors

Fax: ++41 24 445 66 89

**Le lanché**  
**Capacitors**  
A FISCHER & TALSCHER COMPANY

HJJ

22.05.2006

faisab5567.XLS