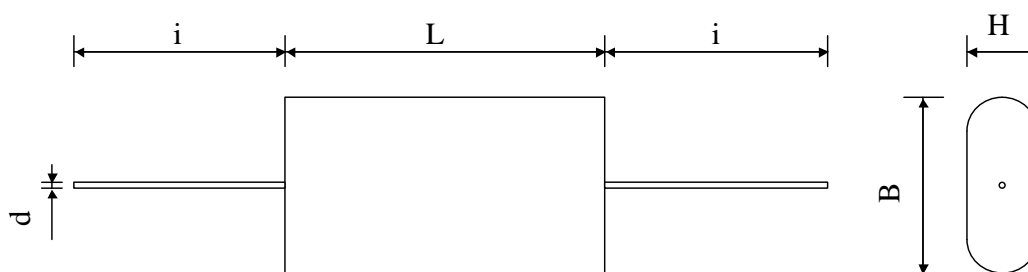


#5659

METALLIZED POLYPROPYLENE CAPACITORS

PPM 480-247 df1 K



Dielectric of metallized polypropylene

Polyester wrapped

Epoxy resin sealing

Parameter	Symbol		Value	Unit	Condition
Capacitance	C		0.0047	μF	1 V / 1 kHz
Tolerance			± 10	%	
Rated voltage	Un DC		4800	VDC	
Rated voltage	Un AC		1400	Veff	50 Hz
RMS Current Max.	Ieff		2.6	Aeff	1 MHz
slope of voltage variation	du/dt max.		22'000	V/ μsec	max. repetitive
Repetitive surge current	I cr. max		103	A	
Tangent delta	tg δ		5	10^{-4}	1 V / 1 kHz
Equivalent serie resistance	ESR		300	m Ω	1 V / 1 MHz
Stray inductance	ESL		≤ 25	nH	
Insulation resistance	Ri		> 50'000	M Ω	100 VDC - 1 min
Test voltage between terminals	U T1		6400	VDC	10 s
Operating temp.			- 40 / + 85 °C		
Estimated operational life (-3%)			100000	h	4200 V - 70°C

Dimension	Symbol			Unit	Conditions
Width	B max		16	mm	
Height	H max		8	mm	
Length	L max		38	mm	
Terminals					
Axial tinned wire	d		$\varnothing 0.8 \times 30$	mm	
	M1				
	M0				
	Modification	Date	Visa émetteur		

Condensateurs CH 1400 Yverdon-les-Bains

Kondensatoren Tel.: ++41 24 445 66 88

Capacitors Fax: ++41 24 445 66 89

Le Janché
Capacitors
A FISCHER & TAUSSCH COMPANY

HJJ

23.04.2007

faisab5659.XLS