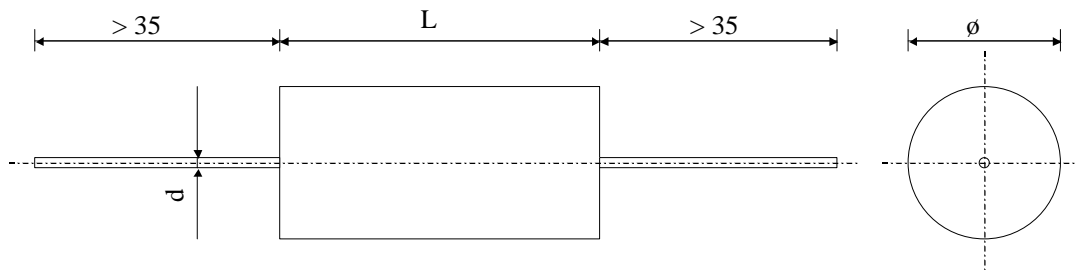


#5640

METALLIZED POLYPROYLLENE CAPACITORS

PPM 400-115 d K



Dielectric of metallized polypropylene

Plastic sleeve / Epoxy resin sealing

Parameter	Symbol		Value	Unit	Condition
Capacitance	C		0.015	$\mu\text{F}$	1 V / 1 kHz
Tolerance			$\pm 10$	%	
Rated voltage	Un DC		4000	VDC	
Rated voltage	Un AC		2200	Veff	50 Hz
RMS current	I RMS max.		1.35	Aeff	10 kHz
slope of voltage variation	du/dt max.		1'700	V/ $\mu\text{sec}$	max. repetitive
Repetitive surge courant	I cr. max		25.5	A	
Tangente delta	tg $\delta$		$\leq 5$	$10^{-4}$	1 V / 1 kHz
Tangente delta	tg $\delta$		$\leq 5$	$10^{-4}$	1 V / 10 kHz
Stray inductance	ESL		$\leq 50$	nH	
Insulation resistance	Ri		$> 100'000$	M $\Omega$	100 VDC - 1 min
Test voltage between terminals	U T1		6000	VDC	10 s
Climatic category			40/85/56		
Estimated operational life (-3%)			100'000	h	Un DC / 70°C

Dimension	Symbol		Value	Unit	Conditions
Diameter	$\varnothing$		17	mm	
Length	L		55	mm	
Terminals					
Axial tinned wire	d		$\varnothing 1.0 \times 30$	mm	
	M1				
	M0				
	Modification	Date	Visa émetteur		

Condensateurs CH 1400 Yverdon-les-Bains  
 Kondensatoren Tel.: ++41 24 445 66 88  
 Capacitors Fax: ++41 24 445 66 89

**Le lanché**  
**Capacitors**  
A FISCHER & TAUERSCHE COMPANY

HJJ

19.02.2007

faisab5640.XLS