

**Metallized Polypropylene Capacitors**

**Type PPI / PPR**

Applications

- Alternating and direct Current Voltage
- Professional Applications
- Coupling / decoupling, Audio
- Instrumentation

Main Characteristics

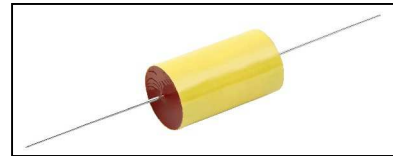
- Dry film technology
- Climatic category: 55/100/56
- Tolerances  $\pm 10\%$   
on request:  $\pm 5\%$ ,  $\pm 2\%$ ,  $\pm 1\%$

Design

- Polyester tape wrap UL-V0
- Tinned copper axial leads
- Epoxy resin end-seal (UL-V0)

Mounting

- Indifferent positioning



**PPR**



**PPI**

**1.0 Rated Values and Operational Data**

DC	Nominal Voltage $U_N$	63	(125)	160	250	(400)	500
	Test Voltage $U_T$ 1 min, 23°C	126	250	320	500	800	1000
AC	Nominal Voltage $U_{N-}$	40	100	100	150	200	200

**2.0 Capacitance Range**

Cn =>	100 pF	5.6 nF	6.8 nF	8.2 nF	12 nF	15 nF	22 nF	27 nF	100 nF
63 VDC									
125 VDC									
160 VDC									
250 VDC									
400 VDC									
500 VDC									
	Plastic housing		Polyester wrap						

**Leclanché Capacitors for Critical Applications and Extreme Environments.**

Tel. +41 24 445 66 88 - Fax +41 24 445 66 89 capinfo@Lcap.ch www.Lcap.ch

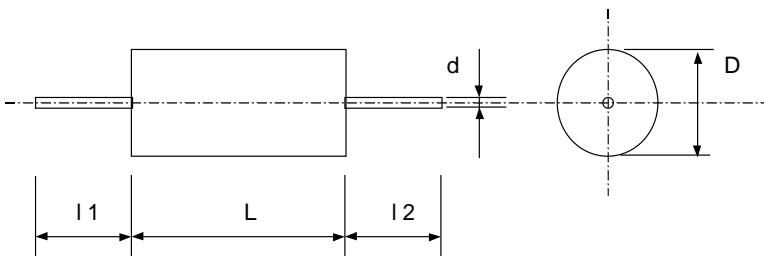
**Metallized Polypropylene Capacitors**

**Type PPI / PPR**

**3.0 Characteristics**

			Min	Typ	Max
Dissipation Factor	tg $\delta$	$C \leq 1000 \text{ pF}$ , 1 MHz, 23°C $C > 1000 \text{ pF}$ , 1 kHz, 23°C			$10 \times 10^{-4}$ $5 \times 10^{-4}$
Insulation resistance 1min, 23°C, 50%HR	$R_i$ [M $\Omega$ hms]	$U_R = 63\text{V}$ , under 10V $U_R \geq 100\text{V}$ , under 100V	$1.0 \times 10^6$		
Temperature coefficient	$\alpha_c$	[ppm / °C]		$-200^{+70/-50}$	

**4.0 Dimensions, shape:**



$\varnothing D$ [mm]	$\leq 7.0$	8 .. 10	$> 10$
$\varnothing d$ [mm]	0.6	0.8	1.0
$l_1, l_2$	min 30 mm		

The capacitors are delivered in bulk

On special request we can deliver tape-mounted.

**Leclanché Capacitors for Critical Applications and Extreme Environments.**

Tel. +41 24 445 66 88 - Fax +41 24 445 66 89 capinfo@Lcap.ch www.Lcap.ch

**Metallized Polypropylene Capacitors**

**Type PPI / PPR**

**PPI 63 VDC**

B4F4 Pos.	Type	Cn [nF]	Dimensions		
			ø [mm]	L [mm]	ø leads [mm]
1	PPI 6-310	0.100	5.0	11.0	0.6
2	PPI 6-312	0.120	5.0	11.0	0.6
3	PPI 6-315	0.150	5.0	11.0	0.6
4	PPI 6-318	0.180	5.0	11.0	0.6
5	PPI 6-322	0.220	5.0	11.0	0.6
6	PPI 6-327	0.270	5.0	11.0	0.6
7	PPI 6-333	0.330	5.0	11.0	0.6
8	PPI 6-339	0.390	5.0	11.0	0.6
9	PPI 6-347	0.470	5.0	11.0	0.6
10	PPI 6-356	0.560	5.0	11.0	0.6
11	PPI 6-368	0.680	5.0	11.0	0.6
12	PPI 6-382	0.820	5.0	11.0	0.6
13	PPI 6-210	1.00	5.0	11.0	0.6
14	PPI 6-212	1.20	5.0	11.0	0.6
15	PPI 6-215	1.50	5.0	11.0	0.6
16	PPI 6-218	1.80	5.0	11.0	0.6
17	PPI 6-222	2.20	6.0	11.0	0.6
18	PPI 6-227	2.70	6.0	11.0	0.6
19	PPI 6-233	3.30	6.0	11.0	0.6
20	PPI 6-239	3.90	6.0	11.0	0.6
21	PPI 6-247	4.70	7.0	11.0	0.6
22	PPI 6-256	5.60	7.0	11.0	0.6
23	PPI 6-268	6.80	7.0	15.0	0.6
24	PPI 6-282	8.20	7.0	15.0	0.6
25	PPI 6-110	10.0	8.0	15.0	0.8
26	PPI 6-112	12.0	8.0	15.0	0.8
27	PPI 6-115	15.0	8.0	22.0	0.8
28	PPI 6-118	18.0	8.0	22.0	0.8
29	PPI 6-122	22.0	8.0	22.0	0.8
30	PPR 6-127	27.0	8.5	22.0	0.8
31	PPR 6-133	33.0	9.0	22.0	0.8
32	PPR 6-139	39.0	10.0	22.0	0.8
33	PPR 6-147	47.0	10.5	22.0	1.0
34	PPR 6-156	56.0	11.5	22.0	1.0
35	PPR 6-168	68.0	12.5	22.0	1.0
36	PPR 6-182	82.0	12.0	27.0	1.0
37	PPR 6-010	100.0	13.0	27.0	1.0

**Leclanché Capacitors for Critical Applications and Extreme Environments.**

Tel. +41 24 445 66 88 - Fax +41 24 445 66 89 capinfo@Lcap.ch www.Lcap.ch

**Metallized Polypropylene Capacitors**

**Type PPI / PPR**

**PPI 160 VDC**

B4F4 Pos.	Type	Cn [nF]	Dimensions		
			ø [mm]	L [mm]	ø leads [mm]
1	PPI 16-310	0.100	5.0	11.0	0.6
2	PPI 16-312	0.120	5.0	11.0	0.6
3	PPI 16-315	0.150	5.0	11.0	0.6
4	PPI 16-318	0.180	5.0	11.0	0.6
5	PPI 16-322	0.220	5.0	11.0	0.6
6	PPI 16-327	0.270	5.0	11.0	0.6
7	PPI 16-333	0.330	5.0	11.0	0.6
8	PPI 16-339	0.390	5.0	11.0	0.6
9	PPI 16-347	0.470	5.0	11.0	0.6
10	PPI 16-356	0.560	5.0	11.0	0.6
11	PPI 16-368	0.680	5.0	11.0	0.6
12	PPI 16-382	0.820	5.0	11.0	0.6
13	PPI 16-210	1.00	6.0	11.0	0.6
14	PPI 16-212	1.20	6.0	11.0	0.6
15	PPI 16-215	1.50	6.0	11.0	0.6
16	PPI 16-218	1.80	5.0	11.0	0.6
17	PPI 16-222	2.20	7.0	11.0	0.6
18	PPI 16-227	2.70	7.0	11.0	0.6
19	PPI 16-233	3.30	7.0	11.0	0.6
20	PPI 16-239	3.90	7.0	15.0	0.6
21	PPI 16-247	4.70	7.0	15.0	0.6
22	PPI 16-256	5.60	8.0	15.0	0.8
23	PPI 16-268	6.80	8.0	15.0	0.8
24	PPI 16-282	8.20	8.0	22.0	0.8
25	PPI 16-110	10.00	8.0	22.0	0.8
26	PPI 16-112	12.00	8.0	22.0	0.8
27	PPI 16-115	15.00	8.5	22.0	0.8
28	PPI 16-118	18.00	9.0	22.0	0.8
29	PPI 16-122	22.00	10.0	22.0	0.8
30	PPR 16-127	27.00	11.0	22.0	1.0
31	PPR 16-133	33.00	11.5	22.0	1.0
32	PPR 16-139	39.00	12.0	22.0	1.0
33	PPR 16-147	47.00	13.0	22.0	1.0
34	PPR 16-156	56.00	13.0	27.0	1.0
35	PPR 16-168	68.00	14.0	27.0	1.0
36	PPR 16-182	82.00	15.0	27.0	1.0
37	PPR 16-010	100.00	16.0	27.0	1.0

**Leclanché Capacitors for Critical Applications and Extreme Environments.**

Tel. +41 24 445 66 88 - Fax +41 24 445 66 89 capinfo@Lcap.ch www.Lcap.ch

**Metallized Polypropylene Capacitors**

**Type PPI / PPR**

**PPI 250 VDC**

B4F4 Pos.	Type	Cn [nF]	Dimensions		
			ø [mm]	L [mm]	ø leads [mm]
1	PPI 25-310	0.100	5.0	11.0	0.6
2	PPI 25-312	0.120	5.0	11.0	0.6
3	PPI 25-315	0.150	5.0	11.0	0.6
4	PPI 25-318	0.180	5.0	11.0	0.6
5	PPI 25-322	0.220	5.0	11.0	0.6
6	PPI 25-327	0.270	5.0	11.0	0.6
7	PPI 25-333	0.330	5.0	11.0	0.6
8	PPI 25-339	0.390	5.0	11.0	0.6
9	PPI 25-347	0.470	5.0	11.0	0.6
10	PPI 25-356	0.560	5.0	11.0	0.6
11	PPI 25-368	0.680	6.0	11.0	0.6
12	PPI 25-382	0.820	6.0	11.0	0.6
13	PPI 25-210	1.00	6.0	11.0	0.6
14	PPI 25-212	1.20	6.0	11.0	0.6
15	PPI 25-215	1.50	7.0	11.0	0.6
16	PPI 25-218	1.80	7.0	11.0	0.6
17	PPI 25-222	2.20	7.0	15.0	0.6
18	PPI 25-227	2.70	7.0	15.0	0.6
19	PPI 25-233	3.30	7.0	15.0	0.6
20	PPI 25-239	3.90	8.0	15.0	0.8
21	PPI 25-247	4.70	8.0	15.0	0.8
22	PPI 25-256	5.60	8.0	22.0	0.8
23	PPI 25-268	6.80	8.0	22.0	0.8
24	PPI 25-282	8.20	8.5	22.0	0.8
25	PPI 25-110	10.00	8.5	22.0	0.8
26	PPI 25-112	12.00	9.0	22.0	0.8
27	PPI 25-115	15.00	10.0	22.0	0.8
28	PPI 25-118	18.00	10.5	22.0	1.0
29	PPI 25-122	22.00	11.5	22.0	1.0
30	PPR 25-127	27.00	12.5	22.0	1.0
31	PPR 25-133	33.00	11.5	27.0	1.0
32	PPR 25-139	39.00	12.5	27.0	1.0
33	PPR 25-147	47.00	13.5	27.0	1.0
34	PPR 25-156	56.00	15.0	27.0	1.0
35	PPR 25-168	68.00	16.0	27.0	1.0
36	PPR 25-182	82.00	16.0	33.0	1.0
37	PPR 25-010	100.00	17.0	33.0	1.0

**Leclanché Capacitors for Critical Applications and Extreme Environments.**

Tel. +41 24 445 66 88 - Fax +41 24 445 66 89 capinfo@Lcap.ch www.Lcap.ch

**Metallized Polypropylene Capacitors**

**Type PPI / PPR**

**PPI 500 VDC**

B4F4	Type	Cn [nF]	Dimensions		
			Pos.	ø [mm]	L [mm]
1	PPI 50-310	0.100	5.0	11.0	0.6
2	PPI 50-312	0.120	5.0	11.0	0.6
3	PPI 50-315	0.150	5.0	11.0	0.6
4	PPI 50-318	0.180	5.0	11.0	0.6
5	PPI 50-322	0.220	5.0	11.0	0.6
6	PPI 50-327	0.270	5.0	11.0	0.6
7	PPI 50-333	0.330	5.0	11.0	0.6
8	PPI 50-339	0.390	5.0	11.0	0.6
9	PPI 50-347	0.470	5.0	11.0	0.6
10	PPI 50-356	0.560	6.0	11.0	0.6
11	PPI 50-368	0.680	6.0	11.0	0.6
12	PPI 50-382	0.820	6.0	11.0	0.6
13	PPI 50-210	1.00	6.0	11.0	0.6
14	PPI 50-212	1.20	7.0	11.0	0.6
15	PPI 50-215	1.50	7.0	11.0	0.6
16	PPI 50-218	1.80	7.0	15.0	0.6
17	PPI 50-222	2.20	7.0	15.0	0.6
18	PPI 50-227	2.70	8.0	15.0	0.8
19	PPI 50-233	3.30	8.0	15.0	0.8
20	PPI 50-239	3.90	8.0	22.0	0.8
21	PPI 50-247	4.70	8.0	22.0	0.8
22	PPI 50-256	5.60	8.0	22.0	0.8
23	PPI 50-268	6.80	8.5	22.0	0.8
24	PPI 50-282	8.20	9.0	22.0	0.8
25	PPI 50-110	10.00	9.5	22.0	0.8
26	PPI 50-112	12.00	10.0	22.0	0.8
27	PPI 50-115	15.00	11.5	22.0	1.0
28	PPI 50-118	18.00	12.0	22.0	1.0
29	PPI 50-122	22.00	13.0	22.0	1.0
30	PPR 50-127	27.00	12.5	27.0	1.0
31	PPR 50-133	33.00	13.5	27.0	1.0
32	PPR 50-139	39.00	14.5	27.0	1.0
33	PPR 50-147	47.00	16.0	27.0	1.0
34	PPR 50-156	56.00	15.0	33.0	1.0
35	PPR 50-168	68.00	16.5	33.0	1.0
36	PPR 50-182	82.00	18.0	33.0	1.0
37	PPR 50-010	100.00	20.0	33.0	1.0

**Leclanché Capacitors for Critical Applications and Extreme Environments.**

Tel. +41 24 445 66 88 - Fax +41 24 445 66 89 capinfo@Lcap.ch www.Lcap.ch