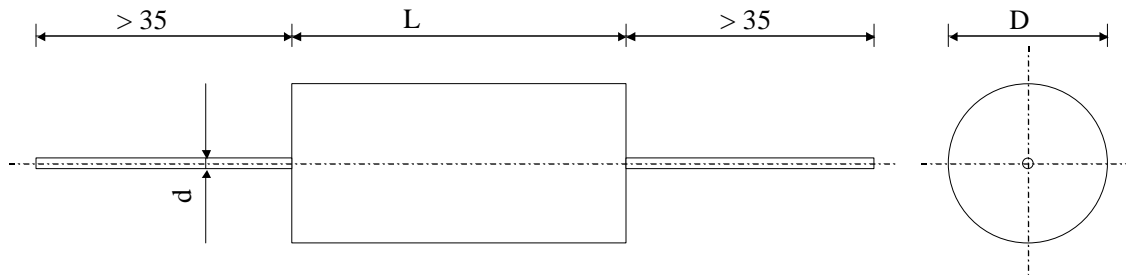


#5815

Power Electronics Capacitors

MKTHT 1200-210 d K



Dielectric : metallized polyester  
 Polyester wrapped, Flammibility UL 510  
 Epoxy resin sealing UL 94-V0

| Parameter                      | Symbol       |      | Value         | Unit         | Condition        |
|--------------------------------|--------------|------|---------------|--------------|------------------|
| Capacitance                    | C            |      | 1.0           | nF           | 1 V / 1 kHz      |
| Tolerance                      |              |      | $\pm 10$      | %            |                  |
| Rated voltage                  | Un DC        |      | 12000         | VDC          |                  |
| Rated voltage                  | Un AC        |      | 450           | Veff         | 50 Hz - 1 kHz    |
| slope of voltage variation     | du/dt max.   |      | 800           | V/ $\mu$ sec | max. repetitive  |
| Tangent delta                  | tg $\delta$  |      | $\leq 150$    | $10^{-4}$    | 10 kHz           |
| Stray inductance               | ESL          |      | $\leq 25$     | nH           |                  |
| Insulation resistance          | Ri           |      | 50'000        | M $\Omega$   | 1000 VDC - 1 min |
| Test voltage between terminals | U T1         |      | 18'000        | VDC          | 10 s             |
| Operating temperature          |              |      | - 40 / + 85   | $^{\circ}$ C |                  |
|                                |              |      |               |              |                  |
|                                |              |      |               |              |                  |
| Dimension                      | Symbol       |      |               | Unit         | Conditions       |
| Diameter                       | D            |      | 10.5          | mm           |                  |
| Length                         | L            |      | 40            | mm           |                  |
| Terminals                      |              |      |               |              |                  |
| Axial tinned wire              | d            |      | 0.8           | mm           |                  |
|                                |              |      |               |              |                  |
|                                |              |      |               |              |                  |
|                                | M1           |      |               |              |                  |
|                                | M0           |      |               |              |                  |
|                                | Modification | Date | Visa émetteur |              |                  |

Condensateurs CH 1400 Yverdon-les-Bains  
 Kondensatoren Tel.: ++41 24 445 66 88  
 Capacitors Fax: ++41 24 445 66 89

**Le lancé**  
**Capacitors**  
A FISCHER & TALENCE COMPANY

HJJ

08.05.2009

faisab5815.XLS