

METALLIZED POLYESTER CAPACITORS
Type MKT ... d
Applications

- AC or DC voltages
- General usage
- Small synchronous motors
- Protection / limitation du/dt
- Coupling, decoupling, audio

Main Characteristics

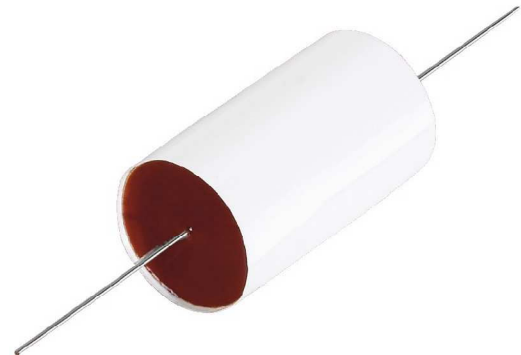
- Dry plastic technology
- Nominal Voltage: 63 VDC à 1000 VDC
- Climatic category: 55/100/21
- Tolerances $\pm 10\%$
on request: $\pm 5\%$, $\pm 2\%$

Design

- Metallized Polyester
- Polyester tape wrap UL-V0
- Tinned copper axial leads
- Epoxy resin end-seal (UL-V0)

Installation

- Position is irrelevant


MKT....d
1.0 Rated Values and Operational Data

DC [VDC]	Nominal Voltage U_N	$\leq 85^\circ\text{C}$	63	100	160	250	400	630	1000
	Category Voltage U_C	$\leq 100^\circ\text{C}$	50	80	130	200	320	500	800
	Test Voltage U_T	2s, 23°C	100	160	260	400	640	1000	1600
AC [VAC]	Nominal Voltage U_N	$\leq 85^\circ\text{C}$ 50/60 Hz	40	63	100	160	200	220	300
	Category Voltage U_C	$\leq 100^\circ\text{C}$ 50/60 Hz	30	40	70	110	140	150	200
	Maximum transitory Voltage $< U_{max}$	$\leq 85^\circ\text{C}$	50	80	125	200	250	275	375

Leclanché Capacitors for Critical Applications and Extreme Environments.

Tel. +41 24 445 66 88 - Fax +41 24 445 66 89 capinfo@Lcap.ch www.Lcap.ch

METALLIZED POLYESTER CAPACITORS
Type MKT ... d

2.0 Capacitance Range

Cn =>	1.0 nF	10 nF	47 nF	0.1 μ F	2.2 μ F	6.8 μ F	15 μ F	33 μ F	56 μ F	100 μ F	120 μ F
63 VDC											
100 VDC											
160 VDC											
250 VDC											
400 VDC											
630 VDC											
1000 VDC											

3.0 Characteristics

			Min	Typ	Max
Dissipation Factor	tg δ	1 kHz, 23°C		50	100 x 10 ⁻⁴
Insulation Resistance 1min, at 23°C	R _i [MOhms]	C \leq 033 μ F U < 100V; 10 V U > 100V; 100 V	15000 30000	30000 60000	
Time Constant 1 min, at 23°C	R _i C [s]	C > 033 μ F U < 100V; 10 V U > 100V; 100 V	5000 10000	10000 20000	
Temperature Coefficient	α_c	-30 ... + 80°C [ppm / °C]	+200	+350	+500
Long term Stability	$\Delta C / C$ [%]	40°C, 50% HR		± 2	

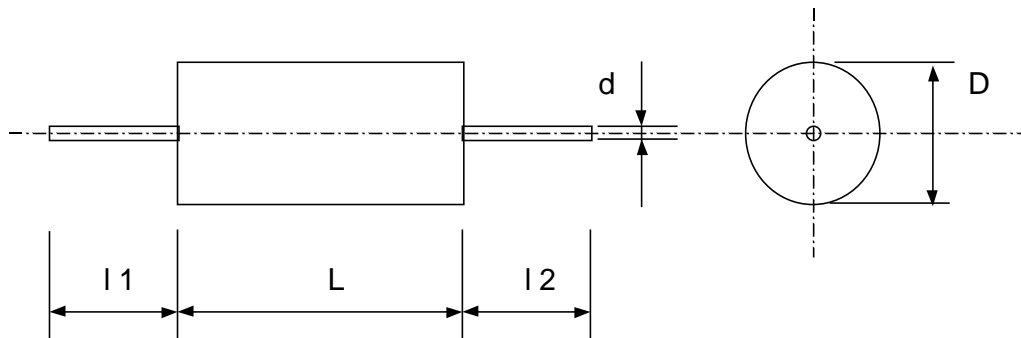
Leclanché Capacitors for Critical Applications and Extreme Environments.

Tel. +41 24 445 66 88 - Fax +41 24 445 66 89 capinfo@Lcap.ch www.Lcap.ch

METALLIZED POLYESTER CAPACITORS
Type MKT ... d
4.0 Usage limits

4.1 du/dt values

L [mm]	Nominal Voltage [VDC]								
	63	100	160	250	400	500	630	1000	
11.5	32	48	64	80	129	159	277	438	
15	17	26	35	44	71	88	127	336	
19	10	16	21	26	42	53	63	126	
27	6	9.5	13	16	26	32	39	69	
32	5	7.5	10	12	20	25	30	53	
42/44	3.5	5	7	8.5	14	17	21	34	
52	2.5	4	5.5	7	11	14	17	28	
(du/dt) _N in V/μs									

5.0 Dimensions, shape:


∅D [mm]	≤ 7	8 .. 16	≥ 16.5
∅ d [mm]	0.6	0.8	1.0
l ₁ , l ₂	min 30 mm		

The capacitors are delivered in bulk.

On special request we can deliver tape-mounted.

Leclanché Capacitors for Critical Applications and Extreme Environments.

Tel. +41 24 445 66 88 - Fax +41 24 445 66 89 capinfo@Lcap.ch www.Lcap.ch

METALLIZED POLYESTER CAPACITORS**Type MKT ... d****MKT 63 VDC axial**

B4F1 Pos.	Type	Cn [μF]	Dimensions		
			∅	L	∅ leads [mm]
1	MKT 6-010 d	0.10	5.0	11.5	0.6
2	MKT 6-012 d	0.12	5.0	11.5	0.6
3	MKT 6-015 d	0.15	5.0	11.5	0.6
4	MKT 6-018 d	0.18	5.5	11.5	0.6
5	MKT 6-022 d	0.22	6.0	11.5	0.6
6	MKT 6-027 d	0.27	5.5	15.0	0.6
7	MKT 6-033 d	0.33	6.0	15.0	0.6
8	MKT 6-039 d	0.39	6.5	15.0	0.6
9	MKT 6-047 d	0.47	6.5	15.0	0.6
10	MKT 6-056 d	0.56	7.0	15.0	0.8
11	MKT 6-068 d	0.68	6.0	19.0	0.6
12	MKT 6-082 d	0.82	6.5	19.0	0.6
13	MKT 6-1.0 d	1.00	7.0	19.0	0.8
14	MKT 6-1.2 d	1.20	8.0	19.0	0.8
15	MKT 6-1.5 d	1.50	8.5	19.0	0.8
16	MKT 6-1.8 d	1.80	9.0	19.0	0.8
17	MKT 6-2.2 d	2.20	8.0	27.0	0.8
18	MKT 6-2.7 d	2.70	9.0	27.0	0.8
19	MKT 6-3.3 d	3.30	9.5	27.0	0.8
20	MKT 6-3.9 d	3.90	10.5	27.0	0.8
21	MKT 6-4.7 d	4.70	11.0	27.0	0.8
22	MKT 6-5.6 d	5.60	12.0	27.0	0.8
23	MKT 6-6.8 d	6.80	12.0	32.0	0.8
24	MKT 6-8.2 d	8.20	12.5	32.0	0.8
25	MKT 6-10 d	10.0	14.0	32.0	0.8
26	MKT 6-12 d	12.0	16.5	32.0	1.0
27	MKT 6-15 d	15.0	18.0	32.0	1.0
28	MKT 6-18 d	18.0	19.5	32.0	1.0
29	MKT 6-22 d	22.0	21.0	32.0	1.0
30	MKT 6-27 d	27.0	19.5	42.0	1.0
31	MKT 6-33 d	33.0	22.0	42.0	1.0
32	MKT 6-39 d	39.0	23.5	44.0	1.0
33	MKT 6-47 d	47.0	26.0	44.0	1.0
34	MKT 6-56 d	56.0	26.0	52.0	1.0
35	MKT 6-68 d	68.0	28.0	52.0	1.0
36	MKT 6-82 d	82.0	31.0	52.0	1.0
37	MKT 6-100 d	100.0	34.0	52.0	1.0
38	MKT 6-120 d	120.0	37.0	52.0	1.0

Leclanché Capacitors for Critical Applications and Extreme Environments.

Tel. +41 24 445 66 88 - Fax +41 24 445 66 89 capinfo@Lcap.ch www.Lcap.ch

METALLIZED POLYESTER CAPACITORS

Type MKT ... d

MKT 100 VDC axial

B4F1	Type	Cn [μF]	Dimensions		
			Pos.	∅ [mm]	L [mm]
1	MKT 10-147 d	0.047	5.0	11.5	0.6
2	MKT 10-156 d	0.056	5.0	11.5	0.6
3	MKT 10-168 d	0.068	5.0	11.5	0.6
4	MKT 10-182 d	0.082	5.5	11.5	0.6
5	MKT 10-010 d	0.10	6.0	11.5	0.6
6	MKT 10-012 d	0.12	6.0	11.5	0.6
7	MKT 10-015 d	0.15	5.5	15.0	0.6
8	MKT 10-018 d	0.18	6.0	15.0	0.6
9	MKT 10-022 d	0.22	6.0	15.0	0.6
10	MKT 10-027 d	0.27	6.5	15.0	0.6
11	MKT 10-033 d	0.33	7.0	15.0	0.8
12	MKT 10-039 d	0.39	6.5	19.0	0.6
13	MKT 10-047 d	0.47	7.0	19.0	0.8
14	MKT 10-056 d	0.56	7.5	19.0	0.8
15	MKT 10-068 d	0.68	8.0	19.0	0.8
16	MKT 10-082 d	0.82	8.5	19.0	0.8
17	MKT 10-1.0 d	1.00	9.0	19.0	0.8
18	MKT 10-1.2 d	1.20	8.0	27.0	0.8
19	MKT 10-1.5 d	1.50	9.0	27.0	0.8
20	MKT 10-1.8 d	1.80	9.5	27.0	0.8
21	MKT 10-2.2 d	2.20	10.5	27.0	0.8
22	MKT 10-2.7 d	2.70	11.5	27.0	0.8
23	MKT 10-3.3 d	3.30	12.5	27.0	0.8
24	MKT 10-3.9 d	3.90	12.0	32.0	0.8
25	MKT 10-4.7 d	4.70	13.0	32.0	0.8
26	MKT 10-5.6 d	5.60	14.0	32.0	0.8
27	MKT 10-6.8 d	6.80	15.5	32.0	0.8
28	MKT 10-8.2 d	8.20	17.0	32.0	1.0
29	MKT 10-10 d	10.0	18.5	32.0	1.0
30	MKT 10-12 d	12.0	20.0	32.0	1.0
31	MKT 10-15 d	15.0	21.0	32.0	1.0
32	MKT 10-18 d	18.0	20.0	42.0	1.0
33	MKT 10-22 d	22.0	22.0	42.0	1.0
34	MKT 10-27 d	27.0	25.0	42.0	1.0
35	MKT 10-33 d	33.0	27.0	44.0	1.0
36	MKT 10-39 d	39.0	29.5	44.0	1.0
37	MKT 10-47 d	47.0	28.0	52.0	1.0
38	MKT 10-56 d	56.0	32.0	52.0	1.0
39	MKT 10-68 d	68.0	35.0	52.0	1.0
40	MKT 10-82 d	82.0	38.0	52.0	1.0
41	MKT 10-100 d	100.0	42.0	52.0	1.0

Leclanché Capacitors for Critical Applications and Extreme Environments.

Tel. +41 24 445 66 88 - Fax +41 24 445 66 89 capinfo@Lcap.ch www.Lcap.ch

METALLIZED POLYESTER CAPACITORS**Type MKT ... d****MKT 160 VDC axial**

B4F1 Pos.	Type	Cn [μ F]	Dimensions		
			\varnothing [mm]	L [mm]	\varnothing leads [mm]
1	MKT 16-110 d	0.010	4.5	11.5	0.6
2	MKT 16-112 d	0.012	5.0	11.5	0.6
3	MKT 16-115 d	0.015	5.0	11.5	0.6
4	MKT 16-118 d	0.018	5.0	11.5	0.6
5	MKT 16-122 d	0.022	5.0	11.5	0.6
6	MKT 16-127 d	0.027	5.0	11.5	0.6
7	MKT 16-133 d	0.033	5.0	11.5	0.6
8	MKT 16-139 d	0.039	5.5	11.5	0.6
9	MKT 16-147 d	0.047	5.5	11.5	0.6
10	MKT 16-156 d	0.056	6.0	11.5	0.6
11	MKT 16-168 d	0.068	6.0	11.5	0.6
12	MKT 16-182 d	0.082	6.5	11.5	0.6
13	MKT 16-010 d	0.10	7.0	11.5	0.8
14	MKT 16-012 d	0.12	6.5	15.0	0.6
15	MKT 16-015 d	0.15	7.0	15.0	0.8
16	MKT 16-018 d	0.18	6.0	19.0	0.6
17	MKT 16-022 d	0.22	6.0	19.0	0.6
18	MKT 16-027 d	0.27	6.5	19.0	0.6
19	MKT 16-033 d	0.33	7.0	19.0	0.8
20	MKT 16-039 d	0.39	7.5	19.0	0.8
21	MKT 16-047 d	0.47	8.0	19.0	0.8
22	MKT 16-056 d	0.56	9.0	19.0	0.8
23	MKT 16-068 d	0.68	8.0	27.0	0.8
24	MKT 16-082 d	0.82	8.5	27.0	0.8
25	MKT 16-1.0 d	1.00	9.0	27.0	0.8
26	MKT 16-1.2 d	1.20	10.0	27.0	0.8
27	MKT 16-1.5 d	1.50	11.0	27.0	0.8
28	MKT 16-1.8 d	1.80	10.5	32.0	0.8
29	MKT 16-2.2 d	2.20	11.5	32.0	0.8
30	MKT 16-2.7 d	2.70	12.5	32.0	0.8
31	MKT 16-3.3 d	3.30	14.0	32.0	0.8
32	MKT 16-3.9 d	3.90	15.0	32.0	0.8
33	MKT 16-4.7 d	4.70	16.0	32.0	0.8
34	MKT 16-5.6 d	5.60	17.5	32.0	1.0
35	MKT 16-6.8 d	6.80	19.0	32.0	1.0
36	MKT 16-8.2 d	8.20	21.0	32.0	1.0
37	MKT 16-10 d	10.0	19.5	44.0	1.0
38	MKT 16-12 d	12.0	21.0	44.0	1.0
39	MKT 16-15 d	15.0	23.5	44.0	1.0
40	MKT 16-18 d	18.0	25.5	44.0	1.0
41	MKT 16-22 d	22.0	28.0	44.0	1.0
42	MKT 16-27 d	27.0	28.0	52.0	1.0
43	MKT 16-33 d	33.0	31.0	52.0	1.0
44	MKT 16-39 d	39.0	33.5	52.0	1.0
45	MKT 16-47 d	47.0	36.5	52.0	1.0
46	MKT 16-56 d	56.0	39.5	52.0	1.0

Leclanché Capacitors for Critical Applications and Extreme Environments.

Tel. +41 24 445 66 88 - Fax +41 24 445 66 89 capinfo@Lcap.ch www.Lcap.ch

METALLIZED POLYESTER CAPACITORS**Type MKT ... d****MKT 250 VDC axial**

B4F1 Pos.	Type	Cn [μ F]	Dimensions		
			\varnothing [mm]	L [mm]	\varnothing leads [mm]
1	MKT 25-110 d	0.010	4.5	11.5	0.6
2	MKT 25-112 d	0.012	4.5	11.5	0.6
3	MKT 25-115 d	0.015	4.5	11.5	0.6
4	MKT 25-118 d	0.018	5.0	11.5	0.6
5	MKT 25-122 d	0.022	5.0	11.5	0.6
6	MKT 25-127 d	0.027	5.5	11.5	0.6
7	MKT 25-133 d	0.033	5.5	11.5	0.6
8	MKT 25-139 d	0.039	6.0	11.5	0.6
9	MKT 25-147 d	0.047	6.0	11.5	0.6
10	MKT 25-156 d	0.056	5.5	15.0	0.6
11	MKT 25-168 d	0.068	6.0	15.0	0.6
12	MKT 25-182 d	0.082	6.5	15.0	0.6
13	MKT 25-010 d	0.10	6.5	15.0	0.6
14	MKT 25-012 d	0.12	7.0	15.0	0.8
15	MKT 25-015 d	0.15	7.5	15.0	0.8
16	MKT 25-018 d	0.18	8.5	15.0	0.8
17	MKT 25-022 d	0.22	9.0	15.0	0.8
18	MKT 25-027 d	0.27	7.5	19.0	0.8
19	MKT 25-033 d	0.33	8.5	19.0	0.8
20	MKT 25-039 d	0.39	9.0	19.0	0.8
21	MKT 25-047 d	0.47	9.5	19.0	0.8
22	MKT 25-056 d	0.56	8.5	27.0	0.8
23	MKT 25-068 d	0.68	9.0	27.0	0.8
24	MKT 25-082 d	0.82	10.0	27.0	0.8
25	MKT 25-1.0 d	1.00	10.5	27.0	0.8
26	MKT 25-1.2 d	1.20	11.5	27.0	0.8
27	MKT 25-1.5 d	1.50	12.0	27.0	0.8
28	MKT 25-1.8 d	1.80	12.5	32.0	0.8
29	MKT 25-2.2 d	2.20	13.5	32.0	0.8
30	MKT 25-2.7 d	2.70	15.0	32.0	0.8
31	MKT 25-3.3 d	3.30	16.0	32.0	0.8
32	MKT 25-3.9 d	3.90	17.5	32.0	1.0
33	MKT 25-4.7 d	4.70	18.5	32.0	1.0
34	MKT 25-5.6 d	5.60	20.5	32.0	1.0
35	MKT 25-6.8 d	6.80	18.5	42.0	1.0
36	MKT 25-8.2 d	8.20	21.0	42.0	1.0
37	MKT 25-10 d	10.0	22.5	42.0	1.0
38	MKT 25-12 d	12.0	25.0	44.0	1.0
39	MKT 25-15 d	15.0	28.5	44.0	1.0
40	MKT 25-18 d	18.0	28.0	52.0	1.0
41	MKT 25-22 d	22.0	31.0	52.0	1.0
42	MKT 25-27 d	27.0	34.0	52.0	1.0
43	MKT 25-33 d	33.0	38.0	52.0	1.0

Leclanché Capacitors for Critical Applications and Extreme Environments.

Tel. +41 24 445 66 88 - Fax +41 24 445 66 89 capinfo@Lcap.ch www.Lcap.ch

METALLIZED POLYESTER CAPACITORS**Type MKT ... d****MKT 400 VDC axial**

B4F1 Pos.	Type	Cn [μ F]	Dimensions		
			\varnothing [mm]	L [mm]	\varnothing leads [mm]
1	MKT 40-110 d	0.010	5.0	11.5	0.6
2	MKT 40-112 d	0.012	5.5	11.5	0.6
3	MKT 40-115 d	0.015	5.5	11.5	0.6
4	MKT 40-118 d	0.018	6.0	11.5	0.6
5	MKT 40-122 d	0.022	6.0	15.0	0.6
6	MKT 40-127 d	0.027	6.0	15.0	0.6
7	MKT 40-133 d	0.033	6.5	15.0	0.6
8	MKT 40-139 d	0.039	7.0	15.0	0.8
9	MKT 40-147 d	0.047	7.0	15.0	0.8
10	MKT 40-156 d	0.056	7.5	15.0	0.8
11	MKT 40-168 d	0.068	8.0	15.0	0.8
12	MKT 40-182 d	0.082	7.5	19.0	0.8
13	MKT 40-010 d	0.10	7.5	19.0	0.8
14	MKT 40-012 d	0.12	8.5	19.0	0.8
15	MKT 40-015 d	0.15	9.0	19.0	0.8
16	MKT 40-018 d	0.18	8.0	27.0	0.8
17	MKT 40-022 d	0.22	8.5	27.0	0.8
18	MKT 40-027 d	0.27	9.5	27.0	0.8
19	MKT 40-033 d	0.33	10.0	27.0	0.8
20	MKT 40-039 d	0.39	11.0	27.0	0.8
21	MKT 40-047 d	0.47	11.5	27.0	0.8
22	MKT 40-056 d	0.56	12.0	27.0	0.8
23	MKT 40-068 d	0.68	12.0	32.0	0.8
24	MKT 40-082 d	0.82	13.5	32.0	0.8
25	MKT 40-1.0 d	1.00	14.0	32.0	0.8
26	MKT 40-1.2 d	1.20	16.0	32.0	0.8
27	MKT 40-1.5 d	1.50	17.5	32.0	1.0
28	MKT 40-1.8 d	1.80	19.5	32.0	1.0
29	MKT 40-2.2 d	2.20	21.0	32.0	1.0
30	MKT 40-2.7 d	2.70	19.5	44.0	1.0
31	MKT 40-3.3 d	3.30	21.5	44.0	1.0
32	MKT 40-3.9 d	3.90	23.5	44.0	1.0
33	MKT 40-4.7 d	4.70	25.5	44.0	1.0
34	MKT 40-5.6 d	5.60	27.5	44.0	1.0
35	MKT 40-6.8 d	6.80	27.5	52.0	1.0
36	MKT 40-8.2 d	8.20	30.0	52.0	1.0
37	MKT 40-10 d	10.0	33.0	52.0	1.0
38	MKT 40-12 d	12.0	36.0	52.0	1.0
39	MKT 40-15 d	15.0	40.0	52.0	1.0

Leclanché Capacitors for Critical Applications and Extreme Environments.

Tel. +41 24 445 66 88 - Fax +41 24 445 66 89 capinfo@Lcap.ch www.Lcap.ch

METALLIZED POLYESTER CAPACITORS**Type MKT ... d****MKT 630 VDC axial**

B4F1 Pos.	Type	Cn [μ F]	Dimensions		
			\varnothing [mm]	L [mm]	\varnothing leads [mm]
1	MKT 63-210 d	0.0010	4.5	11.5	0.6
2	MKT 63-212 d	0.0012	5.0	11.5	0.6
3	MKT 63-215 d	0.0015	5.0	11.5	0.6
4	MKT 63-218 d	0.0018	5.0	11.5	0.6
5	MKT 63-222 d	0.0022	5.0	11.5	0.6
6	MKT 63-227 d	0.0027	5.0	11.5	0.6
7	MKT 63-233 d	0.0033	5.0	11.5	0.6
8	MKT 63-239 d	0.0039	5.5	11.5	0.6
9	MKT 63-247 d	0.0047	5.5	11.5	0.6
10	MKT 63-256 d	0.0056	6.0	11.5	0.6
11	MKT 63-268 d	0.0068	6.5	11.5	0.6
12	MKT 63-282 d	0.0082	7.0	11.5	0.8
13	MKT 63-110 d	0.010	6.0	15.0	0.6
14	MKT 63-112 d	0.012	6.5	15.0	0.6
15	MKT 63-115 d	0.015	6.5	15.0	0.6
16	MKT 63-118 d	0.018	7.0	15.0	0.8
17	MKT 63-122 d	0.022	7.5	15.0	0.8
18	MKT 63-127 d	0.027	8.0	15.0	0.8
19	MKT 63-133 d	0.033	7.0	19.0	0.8
20	MKT 63-139 d	0.039	7.5	19.0	0.8
21	MKT 63-147 d	0.047	8.0	19.0	0.8
22	MKT 63-156 d	0.056	8.5	19.0	0.8
23	MKT 63-168 d	0.068	9.0	19.0	0.8
24	MKT 63-182 d	0.082	10.0	19.0	0.8
25	MKT 63-010 d	0.10	10.5	19.0	0.8
26	MKT 63-012 d	0.12	11.0	19.0	0.8
27	MKT 63-015 d	0.15	10.0	27.0	0.8
28	MKT 63-018 d	0.18	11.0	27.0	0.8
29	MKT 63-022 d	0.22	11.5	27.0	0.8
30	MKT 63-027 d	0.27	12.5	27.0	0.8
31	MKT 63-033 d	0.33	13.0	32.0	0.8
32	MKT 63-039 d	0.39	14.0	32.0	0.8
33	MKT 63-047 d	0.47	15.0	32.0	0.8
34	MKT 63-056 d	0.56	16.5	32.0	1.0
35	MKT 63-068 d	0.68	17.5	32.0	1.0
36	MKT 63-082 d	0.82	19.5	32.0	1.0
37	MKT 63-1.0 d	1.00	21.0	32.0	1.0
38	MKT 63-1.2 d	1.20	19.5	44.0	1.0
39	MKT 63-1.5 d	1.50	21.5	44.0	1.0
40	MKT 63-1.8 d	1.80	23.5	44.0	1.0
41	MKT 63-2.2 d	2.20	26.0	44.0	1.0
42	MKT 63-2.7 d	2.70	28.5	44.0	1.0
43	MKT 63-3.3 d	3.30	29.0	52.0	1.0
44	MKT 63-3.9 d	3.90	31.5	52.0	1.0
45	MKT 63-4.7 d	4.70	34.5	52.0	1.0
46	MKT 63-5.6 d	5.60	35.0	52.0	1.0
47	MKT 63-6.8 d	6.80	41.5	52.0	1.0

Leclanché Capacitors for Critical Applications and Extreme Environments.

Tel. +41 24 445 66 88 - Fax +41 24 445 66 89 capinfo@Lcap.ch www.Lcap.ch

METALLIZED POLYESTER CAPACITORS**Type MKT ... d****MKT 1000 VDC axial**

B4F1 Pos.	Type	Cn [μ F]	Dimensions		
			\varnothing [mm]	L [mm]	\varnothing leads [mm]
1	MKT 100-210 d	0.0010	5.0	15.0	0.6
2	MKT 100-212 d	0.0012	5.0	15.0	0.6
3	MKT 100-215 d	0.0015	5.0	15.0	0.6
4	MKT 100-218 d	0.0018	5.5	15.0	0.6
5	MKT 100-222 d	0.0022	5.5	15.0	0.6
6	MKT 100-227 d	0.0027	6.0	15.0	0.6
7	MKT 100-233 d	0.0033	6.5	15.0	0.6
8	MKT 100-239 d	0.0039	7.0	15.0	0.8
9	MKT 100-247 d	0.0047	7.5	15.0	0.8
10	MKT 100-256 d	0.0056	8.0	15.0	0.8
11	MKT 100-268 d	0.0068	8.5	15.0	0.8
12	MKT 100-282 d	0.0082	9.0	15.0	0.8
13	MKT 100-110 d	0.010	7.0	19.0	0.8
14	MKT 100-112 d	0.012	7.5	19.0	0.8
15	MKT 100-115 d	0.015	8.0	19.0	0.8
16	MKT 100-118 d	0.018	8.5	19.0	0.8
17	MKT 100-122 d	0.022	9.0	19.0	0.8
18	MKT 100-127 d	0.027	10.0	19.0	0.8
19	MKT 100-133 d	0.033	8.5	27.0	0.8
20	MKT 100-139 d	0.039	9.0	27.0	0.8
21	MKT 100-147 d	0.047	9.5	27.0	0.8
22	MKT 100-156 d	0.056	10.5	27.0	0.8
23	MKT 100-168 d	0.068	11.0	27.0	0.8
24	MKT 100-182 d	0.082	12.0	27.0	0.8
25	MKT 100-010 d	0.10	13.0	27.0	0.8
26	MKT 100-012 d	0.12	13.0	32.0	0.8
27	MKT 100-015 d	0.15	14.0	32.0	0.8
28	MKT 100-018 d	0.18	15.5	32.0	0.8
29	MKT 100-022 d	0.22	16.5	32.0	1.0
30	MKT 100-027 d	0.27	18.5	32.0	1.0
31	MKT 100-033 d	0.33	20.0	32.0	1.0
32	MKT 100-039 d	0.39	21.5	32.0	1.0
33	MKT 100-047 d	0.47	23.5	32.0	1.0
34	MKT 100-056 d	0.56	21.5	44.0	1.0
35	MKT 100-068 d	0.68	23.5	44.0	1.0
36	MKT 100-082 d	0.82	25.5	44.0	1.0
37	MKT 100-1.0 d	1.00	28.0	44.0	1.0
38	MKT 100-1.2 d	1.20	28.5	52.0	1.0
39	MKT 100-1.5 d	1.50	31.5	52.0	1.0
40	MKT 100-1.8 d	1.80	34.5	52.0	1.0
41	MKT 100-2.2 d	2.20	38.0	52.0	1.0

Leclanché Capacitors for Critical Applications and Extreme Environments.

Tel. +41 24 445 66 88 - Fax +41 24 445 66 89 capinfo@Lcap.ch www.Lcap.ch