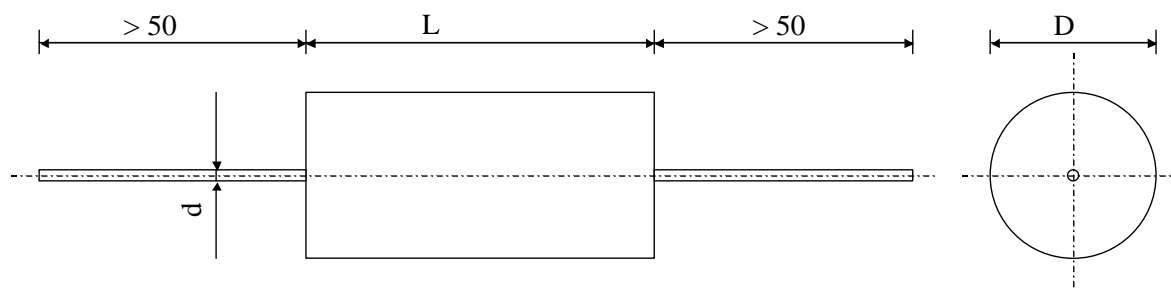


6148

High Voltage Capacitors

TYPE
KP 4000-368 d MPRELIMINARY DATA SHEET
TO BE TESTED

Polypropylene Film-foil

Plastic sleeve / Epoxy resin sealing

Paramètre	Symbol	Value	Unit	Condition
Capacitance	C	680	pF	20°C, 1 kHz
Tolerance		20	%	
Rated voltage	Un DC	40'000	VDC	
Rated voltage	Un AC	1500	VAC	
Tangent delta	tg δ	$\leq 4 E-4$		1 V / 1 kHz / 25 °C
Tangent delta	tg δ	$\leq 7 E-4$		1 V / 10 kHz / 25 °C
Stray inductance	ESL	≤ 100	nH	
Insulation resistance	Ri x C	$> 10'000$	s	500 VDC - 1 min
Test voltage between terminals	U T1	48'000	VDC	1 min
Climatic category		25/70/56		

Dimension	Symbole	Value	Unité	Conditions
Diameter	D	20	mm	
Lenght	L	60	mm	
Terminals				
Axial tinned wire	d	$\varnothing 1 \times 50$	mm	

	M2			
	M1			
	M0			
	Modification	Date	Visa émetteur	

Condensateurs CH 1400 Yverdon, Switzerland
 Kondensatoren Tel.: ++41 24 445 66 88
 Capacitors Fax: ++41 24 445 66 89

Lecranché
Capacitors
A FRICKER & TAUSCHKE COMPANY

HJJ

www.Lcap.ch

18.01.2013

capinfo@Lcap.ch

faisab6148.xls