

Leclanché Capacitors  
48, av. de Grandson  
1400 Yverdon-Switzerland



Tel. +41 24 445 66 88  
Fax +41 24 445 66 89  
e-mail: <mailto:capinfo@lcap.ch>  
www.lcap.ch

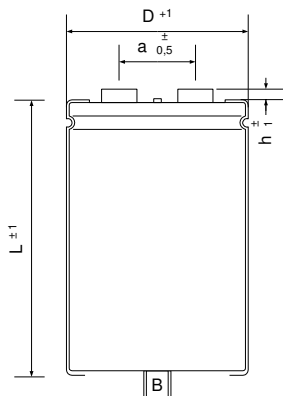
Customer :

Drawing No. 100007700:  
created from : 08/04/2010 18:31:00

Seite 1 / 1

**Typ : GMB82245075222**

**RoHS Compliant**



∅ D : 75 mm  
L : 222 mm  
a : 31,7 mm  
h : 4 mm  
B : M 12 x 16  
Terminals : M 6

**Electrical Parameters**

Rated Capacitance ( $C_R$ ) @ 100 Hz / 20 °C	<b>8200</b> $\mu$ F	
Tolerance	<b>±20</b> %	
Rated Voltage ( $U_R$ )	<b>450</b> V	
Surge Voltage ( $U_S$ ) max. 5 x 1 min / h	<b>495</b> V	
Reverse Voltage ( $U_U$ ) max. 1 s	<b>2</b> V	
Leakage Current ( $I_L$ ) @ $U_R$ / 5 min / 20 °C	<b>11858</b> $\mu$ A	
ESR typ. @ 100 Hz / 20°C	<b>13</b> m $\Omega$	
Tan $\delta$ typ. @ 100 Hz / 20°C	<b>7</b> %	
Z max. @ 10 kHz / 20°C	<b>11</b> m $\Omega$	
ESL typ.	<b>20</b> nH	
Rated Ripple Current ( $I_R$ ) @ 100 Hz / 85 °C	<b>18,5</b> A	
Useful life @ $I_R, U_R, 85$ °C	<b>10000</b> h	
IEC Climatic category / Standards	<b>40/85/56</b>	<b>IEC 60384-4</b>
Applications	industrial	
Your article No.. / Project		