

DPM 125

3½ Digit LCD Module

No.: 695 - Page 1 of 2

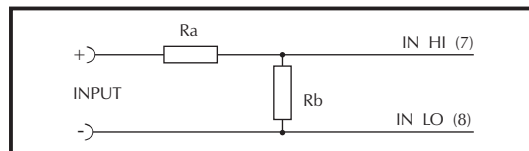
This compact LCD DPM is ideally suited for low or high volume applications. It features an exceptionally large display in a miniature package. The meter will plug directly into a SIL socket or can be panel mounted using the snap in bezel provided. The low profile bezel incorporates a flat reverse printed window giving a superb appearance that cannot be damaged or rubbed off by contact.

- 🔌 12.5mm (0.5") Digit Height
- 🔌 Logic Selectable Decimal Points
- 🔌 Auto-zero
- 🔌 Auto-polarity
- 🔌 200mV d.c Full Scale Reading (F.S.R.)
- 🔌 Low Battery Indication

SCALING

Two resistors may be used to alter the full scale reading of the meter - see table.

Note that the meter will have to be re-calibrated by adjusting the calibration pot.



Required F.S.R.	Ra	Rb
2V	910k	100k
20V	1M	10k
200V	1M	1k
2kV Note	10M	1k
200μA	0R	1k
2mA	0R	100R
20mA	0R	10R
200mA	0R	1R

NOTE

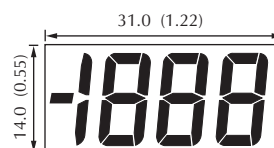
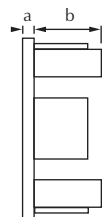
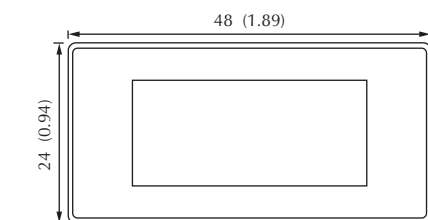
Ensure Ra is rated for high voltage use.



Standard Meter				Stock Number DPM 125
Specification	Min.	Typ.	Max.	Unit
Accuracy (overall error) *		0.05	0.1	% (± 1 count)
Linearity			± 1	count
Sample rate		3		samples/sec
Operating temperature range	0		50	$^{\circ}\text{C}$
Temperature stability		100		ppm/ $^{\circ}\text{C}$
Supply voltage (V+ to V-)	7.5	9	14	V
Supply current		150		μA
Input leakage current (V _{in} = 0V)		1	10	pA

* To ensure maximum accuracy, re-calibrate periodically.

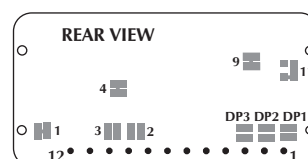
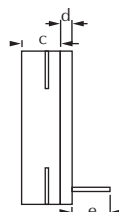
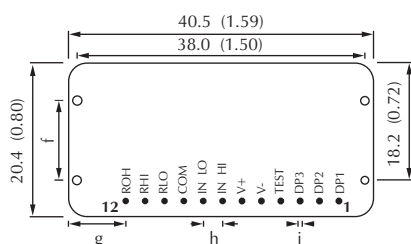
DIMENSIONS All dimensions in mm (inches)



Viewing Area showing display in TEST mode

- 1.50 (0.06)
- 9.00 (0.35)
- 5.00 (0.20)
- 1.60 (0.06)
- 4.00 (0.16)
- 10.4 (0.41)
- 7.50 (0.30)
- 2.54 (0.10)
- 0.50 (0.02)

Panel cut-out
45 x 22.2 (1.77 x 0.87)



ON BOARD SOLDER LINKS

PANEL FITTING

Fit the bezel to the front of the panel and then locate the meter into the bezel from behind. Alternatively the meter and bezel may be assembled before fitting into the front of the panel but care must be taken not to use excessive force. Finally fit the window into the front of the bezel.

PIN FUNCTIONS

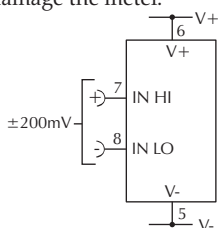
- | | | |
|----------|---|--|
| 1. DP1 | 199.9 | } Connect to V+ to display required DP. |
| 2. DP2 | 19.99 | |
| 3. DP3 | 1.999 | |
| 4. TEST | Connect to V+ to display segments as illustrated. It should not be operated for more than a few seconds as the d.c. voltage applied to the LCD may 'burn' the display. This pin is normally at 5V below V+ and is the ground for the digital section of the meter. It can be used to power external logic up to a maximum of 1mA. | |
| 5. V- | Negative power supply connection. | |
| 6. V+ | Positive power supply connection. | |
| 7. IN HI | Positive measuring differential input. | } Analogue inputs must be no closer than 1V to either the positive or negative supply. |
| 8. IN LO | Negative measuring differential input. | |
| 9. COM | The ground for the analogue section of the A/D converter, held actively at 2.8V (nom.) below V+. COM must not be allowed to sink excessive current (>100µA) by connecting it directly to a higher voltage. | |
| 10. RLO | Negative input for reference voltage (can be connected to COM via Link 3). | |
| 11. RHI | Positive input for reference voltage (connected via Link 1 to ROH). | |
| 12. ROH | Positive output from internal reference. | |

SAFETY

To comply with the Low Voltage Directive (LVD 93/68/EEC), input voltages to the module's pins must not exceed 60Vdc. If voltages to the measuring inputs do exceed 60Vdc, then fit scaling resistors externally to the module. The user must ensure that the incorporation of the DPM into the user's equipment conforms to the relevant sections of BS EN 61010 (Safety Requirements for Electrical Equipment for Measuring, Control and Laboratory Use).

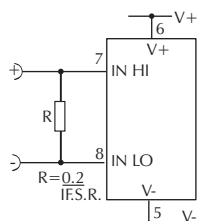
VARIOUS OPERATING MODES

ON-BOARD LINKS: In order to quickly and easily change operating modes for different applications, the meter has several on-board links. They are designed to be easily cut (opened) or shorted (soldered). Do not connect more than one meter to the same power supply if the meters cannot use the same signal ground. Taking any input beyond the power supply rails will damage the meter.



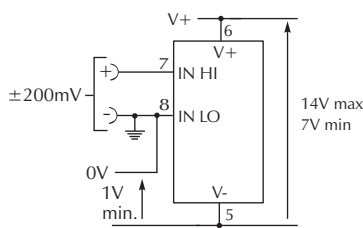
Check Links 2 & 3 are **SHORTED**.

Measuring a floating voltage source of 200mV full scale.



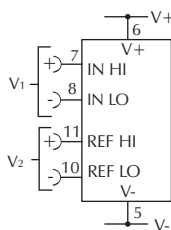
Check Links 2 & 3 are **SHORTED**.

Measuring current. Supply **MUST** be isolated.



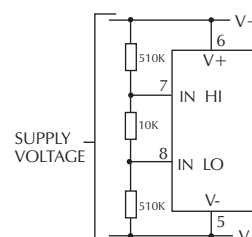
Check Link 3 is **SHORTED**.

Split supply operation.



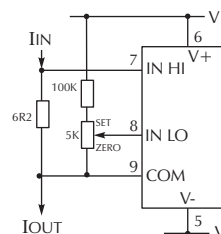
Check Links 1 & 4 are **OPEN**.

Measuring the ratio of two voltages.
Reading = $1000 V_1/V_2$
 $50\text{mV} < V_2 < 200\text{mV}$
 $V_1 < 2V_2$.



Check Link 3 is **SHORTED**.

Measuring a supply voltage.
(min. 7.5V, max. 14V).



Check Link 3 is **SHORTED**.

Measuring 4-20mA to read 0-999.
(supply **MUST** be isolated).