



4130-[*]-[**]

*Number of contacts;

Options are:

3, 4, 5, 6, 7, 8

**Gender; Options are:

M = Male

F = Female

FEATURES:

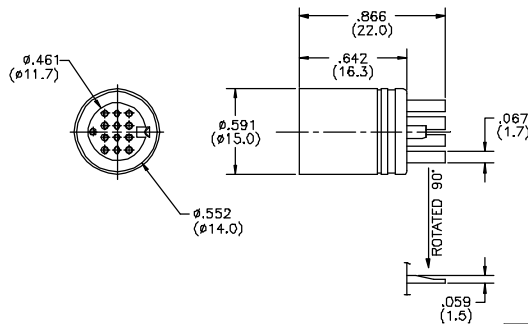
- Metal cover: Nickel plated
- Easy assembly
- Solder type design
- Polarized and keyed to prevent mismatching

ELECTRICAL:

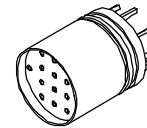
- Current rating: 1 AMP maximum
- Contact resistance: 20 milliohms maximum
- Insulation resistance: 500 Megohms minimum
- Dielectric withstanding voltage: 500 VAC

MATERIAL:

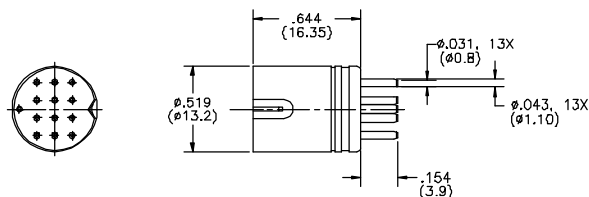
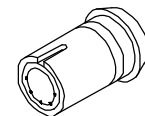
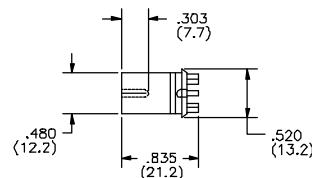
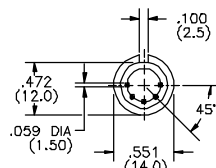
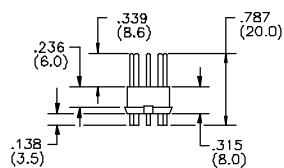
- Insulator: UL94V-0 / PBT glass filled
- Contacts: Pin = Brass
Socket = Phosphor bronze
- Plating: Tin plated
- Operating temperature: -55°C to +105°C
- Color: Black



Female



3-PIN	4-PIN	5-PIN	5-PIN	5-PIN	6-PIN	7-PIN	8-PIN	8-PIN
4P	4P	5P 180°	5P 240°	5P 360°	6P	7P	8P 270°	8P 262°



Male



3-PIN	4-PIN	5-PIN	5-PIN	5-PIN	6-PIN	7-PIN	8-PIN	8-PIN
4P	4P	5P 180°	5P 240°	5P 360°	6P	7P	8P 270°	8P 262°