

## Programming Device

- An intelligent connection stick that programmes and saves the Pathfinder Panel device configuration
- Supplied with programming software (CD-ROM) to enable amendments to the device configuration using Microsoft Windows (7, XP or Vista)
- Can store and print logbooks from devices



## Order Codes

Programming Device

PFDSTICK

## 3 Phase Monitor Relay

- Three phase monitor
- Detects phase or circuit failures in general lighting sub-distribution panels with volt free failure indication contact
- LED indication for L1, L2 and L3
- Monitoring low voltage and mains failure in three phase systems
- Voltage – 230V/400V AC 50/60 Hz
- To be installed in accordance with BS5266/EN50172



## Order Codes

3 Phase Monitor Relay

PFD3PMONITOR

## Integral Pathfinder LED Head

- An integral luminaire LED head with threaded body and lock nut for ease of installation
- Supplied complete with driver
- Small, discrete and high performing LED head
- Aluminium heat sink integrated in head
- 18mm diameter and 110° beam angle



## Order Codes

NB: Product is supplied within a luminaire and not individually. To specify this product within a luminaire please consult our Technical Desk.

### Mimic Panel

- A control monitoring device for external status and failure indication of upto 16 Pathfinder control panels (page 236)
- Manual and automatic function and battery duration test can be activated centrally at definable intervals
- Displays status of all connected Pathfinder control panels
- A central monitoring device for up to 16 Pathfinder panels.
- Includes:
  - One interface card for the connection of 8 Pathfinder control panels
  - A second interface card for a further 8 panels is available (supplied separately)
  - One button control
  - 4 volt-free contact, one of which can be programmed
  - 3 status LEDs
  - Central reset
  - Central blocking function
  - Connection by 3 wire bus cable



### Order Codes

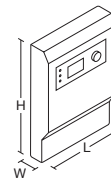
Mimic panel with 1 interface card for up to 8 Pathfinder control panels

**PFDMIM**

Additional interface card to enable expansion to up to 16 Pathfinder control panels

**PFDINTCARD**

### Dimensions



Version	W	H	D	KG
PFDMIM	186	230	38	0.8

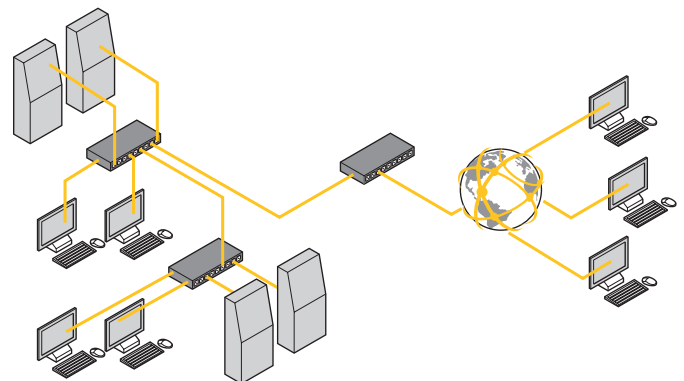
### Web Control Software

- To centrally control and monitor up to 99 Pathfinder Control Panels via the Internet/Intranet remotely
- To be installed on a PC with Ethernet access and Windows XP, Vista or Windows 7

### Functionality

- Automatic function/battery duration test
- Logbook function for all connected devices
- Email automatically sent at definable intervals in the event of tests or faults
- Overall status displayed (of all systems) by an icon on the task bar

### Internal or External Control



### Order Codes

Web control software

**PFDWEBCS**