

# TSW-550

## 5" Touch Screen

- > Ultra clean, modern appearance
- > Thin profile and small footprint
- > Affordable and easy to install
- > 5" widescreen active-matrix color display
- > 800 x 480 WVGA display resolution
- > Capacitive touch screen technology
- > Smart Graphics™ support [1]
- > High-performance H.264 streaming video
- > Rava® SIP intercom and phone technology
- > Customizable audio feedback
- > Built-in microphone and speakers
- > 5 soft-touch capacitive buttons
- > Single-wire Ethernet connectivity
- > PoE network powered
- > Includes TSW-UMB Universal Mounting Bracket
- > Supports pre or post-construction wall mounting
- > Masonry mounting option available [2]
- > Available tabletop and swivel mount options [2]
- > Available in smooth black or white finish

### Advanced Touch Screen Control

A Crestron® touch screen offers an ideal user-interface for controlling all the technology in your home, boardroom, classroom, courtroom, or command center. Touch screens do away with piles of remote controls, cluttered wall switches, and cryptic computer screens, simplifying and enhancing the way you use technology. For controlling audio, video, lighting, shades, HVAC, security, and other systems, Crestron touch screens are fully-customizable with easy-to-use controls and icons, true feedback and real-time status display, live streaming video, and advanced navigation of digital media servers, tuners, and other devices.

With its clean, contemporary design highlighted by edge-to-edge glass and stunning color graphics, the Crestron TSW-550 touch screen makes an elegant statement on any wall, tabletop, or lectern. Perfectly at home in the most contemporary residence or modern office building, its high-tech good looks underline its power for simplifying everyday tasks and functions throughout any facility.

The TSW-550 delivers the ultimate touch screen experience in an unobtrusive, space-saving design featuring a brilliant 5 inch capacitive touch screen display and 5 soft-touch buttons. Additional features include PoE connectivity, high-performance H.264 video, audio feedback, [Rava® SIP Intercom](#), and advanced Smart Graphics™.

### Smart Graphics™[1]

Crestron touch screens use Smart Graphics to deliver the ultimate user experience and the ultimate value by enabling the creation of dynamically rich user interfaces with incredible efficiency and unparalleled functionality. Using Smart Graphics, programmers can swiftly integrate fluid gesture-driven controls, animated feedback, rich metadata, embedded apps and



widgets, and full-motion video for a deeply engaging and ultra-intuitive touch screen experience.

Crestron Smart Graphics offers these enhancements and more:

- Cool-looking graphical buttons, sliders, knobs, and gauges that are intuitive and fun to use
- Kinetic effects to enhance the feeling of realism, with lists and toolbars that scroll with momentum at the flick of a fingertip
- Drag-and-drop objects that snap into place, offering an easy way to switch sources
- Dashboard widgets to personalize the touch screen with clocks, weather, news, and other information
- Customizable themes allowing a completely different look and feel for every user, event, or season
- Fully-developed SmartObjects™ that enable sophisticated control over complex devices with minimal programming

### Soft-Touch Buttons

The TSW-550 includes five soft-touch capacitive buttons for quick access to commonly used functions. The buttons are pre-labeled with icons for "Power", "Home", "Lights", "Up", and "Down" functions. Each button is programmable via the control system for custom functionality.

### Streaming Video

High-performance streaming video capability makes it possible to view security cameras and other video sources right on the touch screen. Native support for H.264 and MJPEG formats allows the TSW-550 to display live streaming video from an IP camera, a streaming server (Crestron [CEN-NVS200](#) or similar<sup>[2]</sup>), or a [DigitalMedia™](#) switcher. Video is delivered to the touch screen over Ethernet, eliminating the need for any extra video wiring.

# TSW-550 5" Touch Screen



TSW-550-W-S – Shown in White



TSW-550-B-S with TSW-550-TTK TableTop Mounting Kit

## Rava® SIP Intercom

Rava SIP Intercom Technology enables hands-free VoIP communication with other Rava-enabled touch screens and door stations. Rava works over Ethernet, supporting 2-way intercom, video intercom<sup>[3]</sup>, and paging without any special wiring. VoIP phone capability is also possible through integration with an SIP-compatible IP phone system or SIP server, allowing hands-free telephone functionality complete with speed-dialing, caller ID, custom ringers, and other enhancements. Built-in echo cancellation affords full-duplex performance for clear, seamless voice communication using the TSW-550's integrated microphone and speakers.

## Audio Feedback

Customized audio files can be loaded to add another dimension to the touch screen graphics using personalized sounds, button feedback, and voice prompts.

## Single-Wire Connectivity

A simple Ethernet LAN connection is all that is required to wire the TSW-550, containing all control, video, intercom, and power signals within a single wire.

## Power over Ethernet

Using PoE technology, the TSW-550 gets its operating power right through the LAN wiring. PoE (Power over Ethernet) eliminates the need for a local power supply or any dedicated power wiring. A PoE Injector (PWE-4803RU<sup>[2]</sup>) simply connects in line with the LAN cable at a convenient location. Crestron PoE switches (CEN-SW-POE-5 or CEN-SWPOE-16<sup>[2]</sup>) may also be used to provide a total networking solution with built-in PoE.

## Simple, Versatile Mounting

The TSW-550 installs easily into drywall and other surfaces using the included TSW-UMB Universal Mounting Bracket. The TSW-UMB provides a post-construction wall mounting solution that is compatible with a variety of current and future Crestron devices, allowing the device to be changed at any time without having to cut or patch the wall, or order any additional mounting hardware. Pre-construction mounting applications are also

accommodated using the included TSW-UMB-PMK Pre-Construction Mounting Kit. A back box option (TSW-550-BBI<sup>[2]</sup>) is also available for concrete and masonry applications.

When installed, the touch screen protrudes just 1/2 inch from the mounting surface and is magnetically adhered to the mounting bracket, eliminating any visible screws for an ultra clean appearance.

## Tabletop Option

Using the optional Tabletop Kit (TSW-550-TTK<sup>[2]</sup>), the TSW-550 becomes a stylish, freestanding touch screen that fits perfectly on a table, desk, or countertop. It can even be permanently attached to the surface using the optional Swivel Mount Kit (TSW-550/750/1050-SMK<sup>[2]</sup>).

## SPECIFICATIONS

### Touch Screen Display

Display Type: TFT Active matrix color LCD  
Size: 5 inch (127 mm) diagonal  
Aspect Ratio: 15:9 WVGA  
Resolution: 800 x 480 pixels  
Brightness: 300 nits (cd/m<sup>2</sup>)  
Contrast: 450:1  
Color Depth: 24-bit, 16.7M colors  
Illumination: Edgelit LED  
Viewing Angle: ±69° horizontal, +62°/-64° vertical  
Touch Screen: Projected Capacitive

### Buttons

Hard Keys: (5) Projected capacitive pushbuttons, programmable, pre-labeled with icons for "Power", "Home", "Lights", "Up", and "Down"  
Reset: (1) Miniature pushbutton on rear panel for hardware reset

# TSW-550 5" Touch Screen

## Memory

---

LPDDR2 RAM: 1 GB  
Flash: 4 GB  
Maximum Project Size: 512 MB

## Graphics Engine

---

Supports Smart Graphics™ [1]

## Communications

---

Ethernet: 10/100 Mbps, auto-switching, auto-negotiating, auto-discovery, full/half duplex, DHCP, IEEE 802.3af and 802.3at Type 1 compliant

## Video

---

Streaming Formats: H.264 (MPEG-4 part 10 AVC), MJPEG

## Audio

---

Features: Built-in microphone and speakers, Rava® SIP Intercom  
Audio Feedback Formats: MP3

## Connectors

---

LAN PoE: (1) 8-wire RJ45 with 2 LED indicators;  
10Base-T/100Base-TX Ethernet port, Power over Ethernet compliant;  
Green and yellow LEDs indicate Ethernet port status

## Power Requirements

---

Power over Ethernet: IEEE 802.3at Type 1 (802.3af compatible) Class 3 (12.95W) PoE Powered Device

## Environmental

---

Temperature: 32° to 112°F (0° to 45°C)  
Humidity: 10% to 90% RH (non-condensing)  
Heat Dissipation: 44 BTU/hr

## Enclosure

---

Construction: Plastic, smooth black or white finish  
Mounting: Surface mount over a 2.5 in (64 mm) high x 3.75 in (96 mm) wide cutout, pre/post-construction mounting bracket assembly included, optional tabletop kit or back box sold separately.

## Dimensions

---

Height: 3.65 in (93 mm)  
Width: 5.65 in (144 mm)  
Depth: 2.03 in (52 mm)

## Weight

---

9.5 oz (267 g)

## MODELS & ACCESSORIES

### Available Models

---

TSW-550-B-S: 5" Touch Screen, Black Smooth  
TSW-550-W-S: 5" Touch Screen, White Smooth

### Included Accessories

---

TSW-UMB: Universal Mounting Bracket  
TSW-UMB-PMK: Pre-Construction Mounting Kit for TSW-UMB

### Available Accessories

---

TSW-550-TTK: Tabletop Kit for TSW-550 [specify color]  
TSW-550/750/1050-SMK: Swivel Mount Kit for TSW-550-TTK  
TSW-550-BBI: Wall Mount Back Box - International Version  
PWE-4803RU: PoE Injector  
CEN-SW-POE-5: 5-Port PoE Switch  
CEN-SWPOE-16: 16-Port Managed PoE Switch  
CEN-NVS200: Network Video Streamer  
SW-VMK-WIN: TouchPoint® Virtual Mouse & Keyboard Software for Windows®

### Notes:

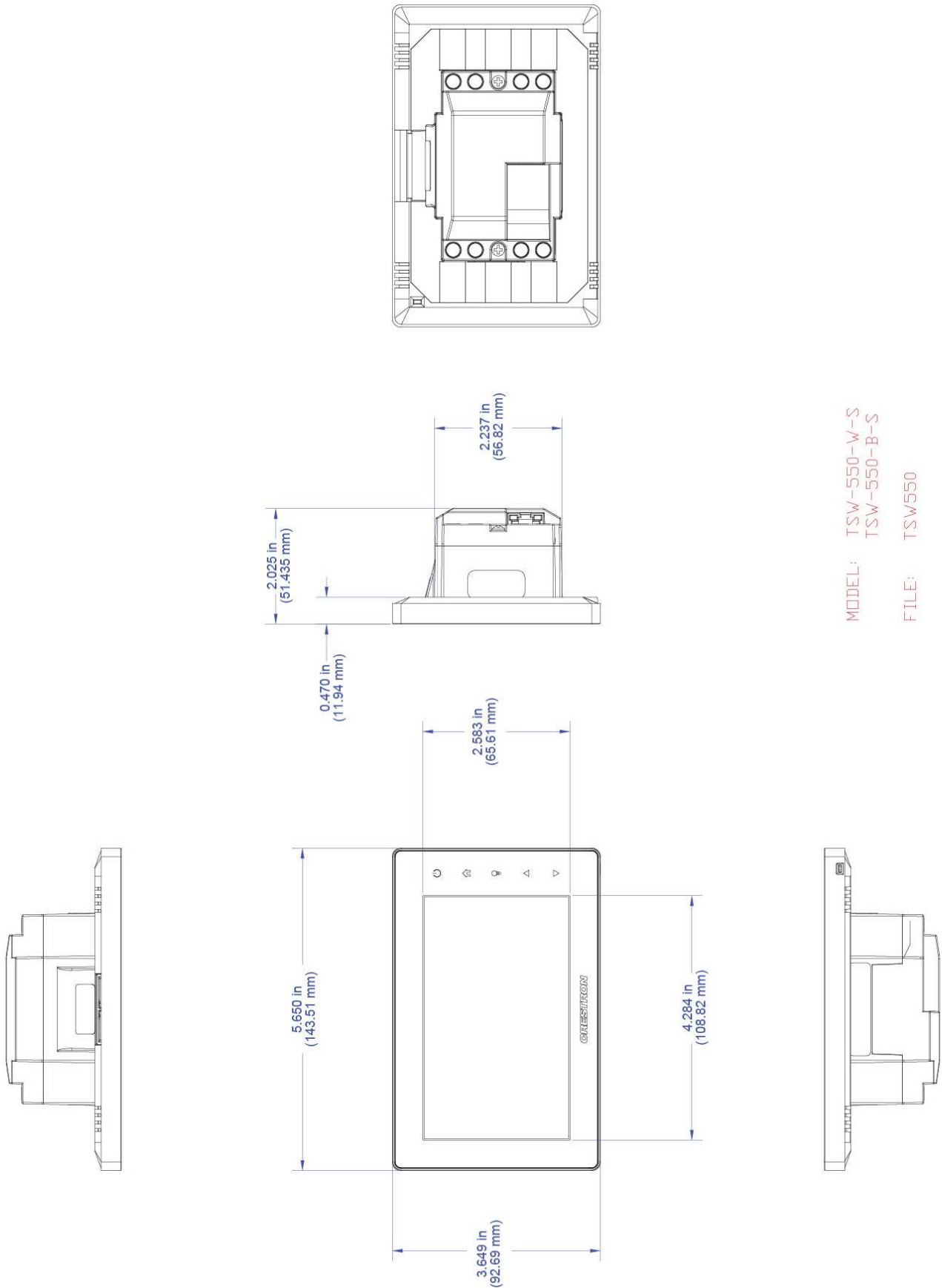
1. Supports Smart Graphics only. Not compatible with "traditional" UI projects.
2. Item(s) sold separately.
3. H.264 compatible IP camera required.

This product may be purchased from an authorized Crestron dealer. To find a dealer, please contact the Crestron sales representative for your area. A list of sales representatives is available online at [www.crestron.com/salesreps](http://www.crestron.com/salesreps) or by calling 800-237-2041.

The specific patents that cover Crestron products are listed online at: [patents.crestron.com](http://patents.crestron.com).

Crestron, the Crestron logo, DigitalMedia, Rava, Smart Graphics, SmartObjects, and TouchPoint are either trademarks or registered trademarks of Crestron Electronics, Inc. in the United States and/or other countries. Windows is either a trademark or registered trademark of Microsoft Corporation in the United States and/or other countries. Other trademarks, registered trademarks, and trade names may be used in this document to refer to either the entities claiming the marks and names or their products. Crestron disclaims any proprietary interest in the marks and names of others. Crestron is not responsible for errors in typography or photography. Specifications are subject to change without notice. ©2014 Crestron Electronics, Inc.

# TSW-550 5" Touch Screen



MODEL: TSW-550-W-S  
TSW-550-B-S

FILE: TSW550