

# SRS Valve

## Manifold mountable plastic switching solenoid valve

---

### FEATURES

- 3-way, 2 position valve (NO, NC & Distributor)
- Design incorporates thermoplastics and non-corrosive metals
- Offers high-density manifold mounting with convenient manifold to PC board interface
- Weighs only 7 g, perfect where low weight is critical to overall system



### MEDIA COMPATIBILITY

Gases and select liquids

### WETTED MATERIALS

Body:  
PBT; LNP Thermocomp®

Elastomers:  
FKM

Non-corrosive metals:  
302 series stainless steel; 430 FR series stainless steel; CMI-B core iron; electroless nickel plating

### ELECTRICAL

Power 0.5, 1.0 or 2.0 W

Voltage 5, 12, 24 V<sub>DC</sub> ± 10%

### PHYSICAL PROPERTIES

Operating environment	0 to 70 °C
Storage temperature	-40 to 70 °C
Length	38 mm (1.5 in)
Width	10 mm (0.394 in)
Height	15.5 mm (0.61 in)
Porting	Manifold mount, (gasket and screws supplied)
Weight	7 g (0.23 oz)
Internal volume	0.0267 cm <sup>3</sup>
Filtration (recommended)	40 µm
Lubrication	None required

Thermocomp® is a registered trademark of General Electric Company.

# SRS Valve

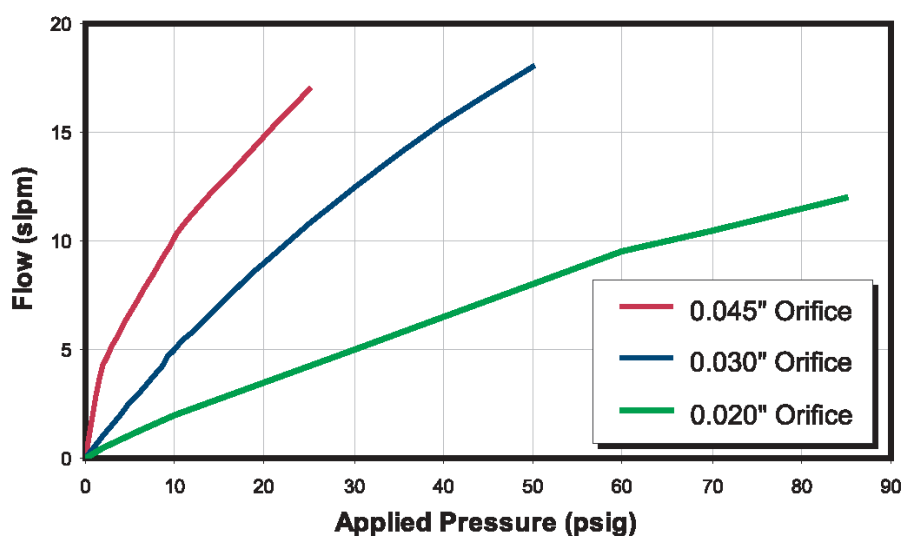
## Manifold mountable plastic switching solenoid valve

---

### PERFORMANCE CHARACTERISTICS

Part no.	Pressure	Vacuum	Orifice sizes/ Equivalent C <sub>V</sub> <sup>1</sup>	Leak rate <sup>2</sup>	Response
SRS10...	0...35 psig	0...27 "Hg (0...13 psi)	0.020" (0.510 mm)/ 0.0075 C <sub>V</sub>	≤0.016 sccm (bubble tight)	<30 msec cycling (2 Watts)
SRS11...	0...85 psig				
SRS13...	0...20 psig		0.030" (0.762 mm)/ 0.017 C <sub>V</sub>		
SRS14...	0...50 psig				
SRS16...	0...10 psig		0.045" (1.143 mm)/ 0.027 C <sub>V</sub>		
SRS17...	0...20 psig				

### FLOW CURVES (typical air flow)<sup>3</sup>



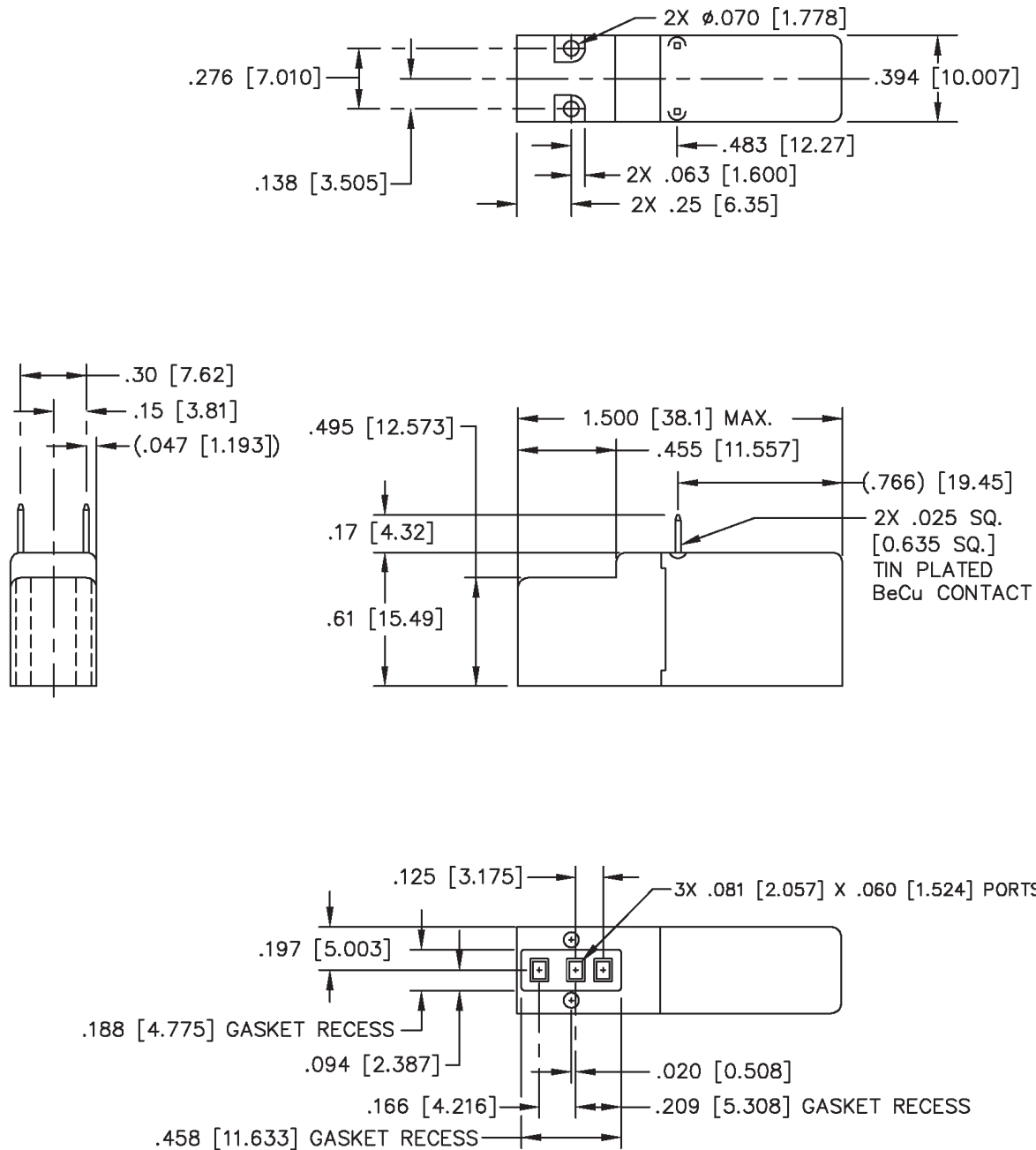
#### Notes:

- <sup>1</sup> The  $C_v$  value is the volume flow in US gallons/min under specific flow conditions and describes the relative flow capacity of a valve. If several valves with the same nominal diameter are compared, the valve with the highest  $C_v$  value has the best flow dynamics design. The equivalent european measure is the  $k_v$  value expressed in  $m^3/h$  ( $k_v = 0.86 C_v$ ).
- <sup>2</sup> sccm denotes Standard Cubic Centimeters per Minute. It is a unit for the flow rate at standard conditions of temperature and pressure. 1000 sccm = 1 slpm.
- <sup>3</sup> slpm denotes Standard Liters per Minute. It is a unit for the flow rate at standard conditions of temperature and pressure. 1 slpm = 1000 sccm.

# SRS Valve

## Manifold mountable plastic switching solenoid valve

### OUTLINE DRAWING

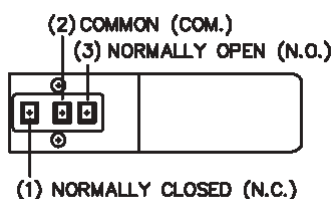


dimensions in inches (mm)

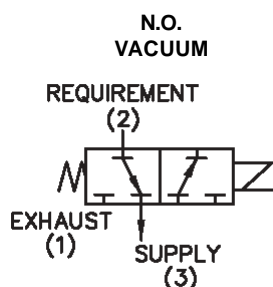
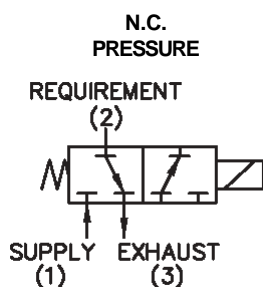
# SRS Valve

## Manifold mountable plastic switching solenoid valve

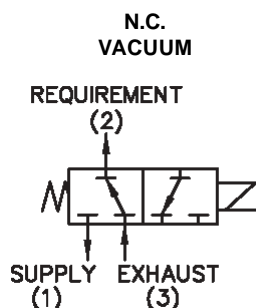
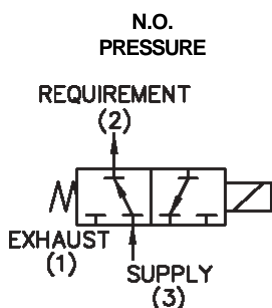
### VALVE TYPE



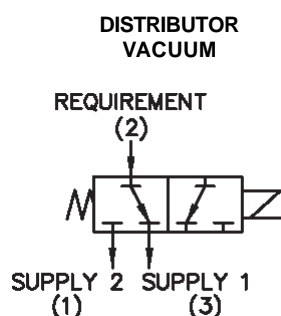
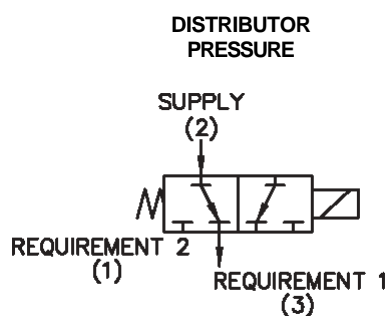
### Type 1



### Type 2



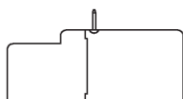
### Type 3



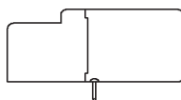
# SRS Valve

## Manifold mountable plastic switching solenoid valve

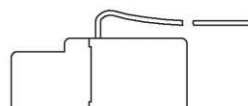
### ELECTRICAL INTERFACE OPTIONS



SRS...F  
(Square pins, front)



SRS...M  
(Square pins, manifold)



SRS...L  
(Wire leads)

### ORDERING INFORMATION

Series		Model no.			Type		Material		Seal material		Voltage		Electrical connection				
		Max. pressure	Orifice size	Coil wattage													
Options	SRS	10:	0...35 psi	0.020" (0.510 mm)	0.5 W	1:	3-way NC	P:	PBT	V:	FKM	5:	5 V <sub>DC</sub>	F:	0.025" square pins, front		
		11:	0...85 psi	0.020" (0.510 mm)	1 W		2:		3-way NO		12:		12 V <sub>DC</sub>		M:	0.025" square pins, manifold interface	
		13:	0...20 psi	0.030" (0.762 mm)	0.5 W				3:				distributor			24:	24 V <sub>DC</sub>
		14:	0...50 psi	0.030" (0.762 mm)	1 W												
		16:	0...10 psi	0.045" (1.143 mm)	0.5 W												
		17:	0...20 psi	0.045" (1.143 mm)	1 W								L:				insulated wire leads, 18", front
Example:	SRS	10	2			P	V	12	M								

**Note: Not all combinations might be available. Please contact First Sensor for further information.**

First Sensor reserves the right to make changes to any products herein. First Sensor does not assume any liability arising out of the application or use of any product or circuit described herein, neither does it convey any license under its patent rights nor the rights of others.