

CNC Form Measuring Instrument Automation Support **FORMTRACER EXTREME SV-C4500 CNC**



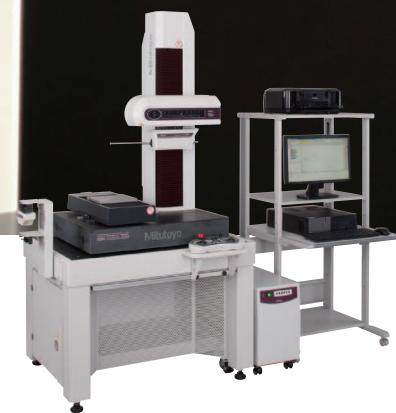
The next stage of automatic surface roughness/form measuring instrument

Form Measurement



Bulletin No. 2161

Mitutoyo

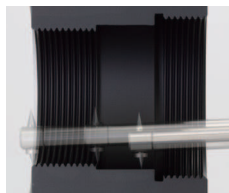


CNC Form Measuring Instrument Automation Support FORMTRACER EXTREME SV-C4500 CNC

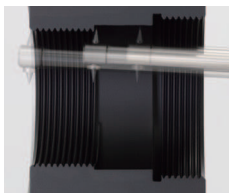


FEATURES

- The SV-C4500CNC is a high accuracy contact type CNC contour and surface roughness measuring system.
- This model introduces the dual-sided stylus design into the CNC model for the first time, thus enabling measurement and analysis of both upward and downward directions without having to stop for orientation adjustments.
- A Z2-axis Tracking Measurement function combined with the dual-sided stylus allows for accurate measurement of large inner and outer diameters while using the column Z2-axis scale positions.



Lower direction measurement
(Bottom surface)

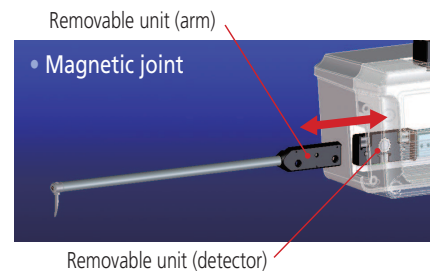


Upper direction measurement
(Top surface)



SPECIFICATIONS

Model	SV-C4500S CNC	SV-C4500H CNC
Measurement Range X-axis	7.87" (200mm)	7.87" (200mm)
Measurement Range Y-axis	7.87" (200mm)	7.87" (200mm)
Measurement Range Z2-axis	11.81" (300mm)	19.69" (500mm)
Z1-axis Accuracy	$\pm(0.8+2H/100)\mu\text{m}$	$\pm(0.8+2H/100)\mu\text{m}$
Z2-axis Accuracy: w/o a-axis	$\pm(1.5+10H/1000)\mu\text{m}$	$\pm(1.5+10H/1000)\mu\text{m}$
Z2-axis Accuracy: w/ a-axis	No spec	No spec
X1-axis Contour mode: Accuracy	$\pm(0.8+4L/200)\mu\text{m}$	$\pm(0.8+4L/200)\mu\text{m}$
X1-axis Contour mode: Straightness	$2\mu\text{m}/200\text{mm}$	$2\mu\text{m}/200\text{mm}$
X1-axis Roughness mode: Straightness	$0.5\mu\text{m}/200\text{mm}$	$0.5\mu\text{m}/200\text{mm}$
Measuring Force	10 - 50 mN (Selectable)	10 - 50 mN (Selectable)
Max. Movement Speed	200mm/sec.	200mm/sec.
Mass	529 lbs. (240kg)	551 lbs. (250kg)



Mitutoyo America Corporation
www.mitutoyo.com

One Number to Serve You Better
1-888-MITUTOYO (1-888-648-8869)

Mitutoyo

M³ Solution Centers
Aurora, Illinois
(Corporate Headquarters)
Westford, Massachusetts
Huntersville, North Carolina
Mason, Ohio

Plymouth, Michigan
City of Industry, California
Birmingham, Alabama
Renton, Washington
Houston, Texas

Note: All information regarding our products, and in particular the illustrations, drawings, dimensional and performance data contained in this printed matter as well as other technical data are to be regarded as approximate average values. We therefore reserve the right to make changes to the corresponding designs. The stated standards, similar technical regulations, descriptions and illustrations of the products were valid at the time of printing. In addition, the latest applicable version of our General Trading Conditions will apply. Only quotations submitted by ourselves may be regarded as definitive.

Mitutoyo products are subject to US Export Administration Regulations (EAR). Re-export or relocation of our products may require prior approval by an appropriate governing authority.

Trademarks and Registrations

Designations used by companies to distinguish their products are often claimed as trademarks. In all instances where Mitutoyo America Corporation is aware of a claim, the product names appear in initial capital or all capital letters. The appropriate companies should be contacted for more complete trademark and registration information.

