

# 2-D Color Vision Measuring System Quick Image Series

*One-click instant measurement*



Mitutoyo Corporation  
80th Anniversary  
Since 1934

Vision Measuring Systems

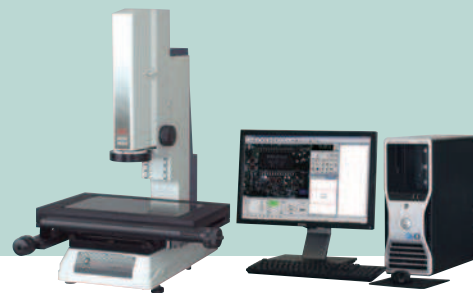


Bulletin No. 2152

# Mitutoyo



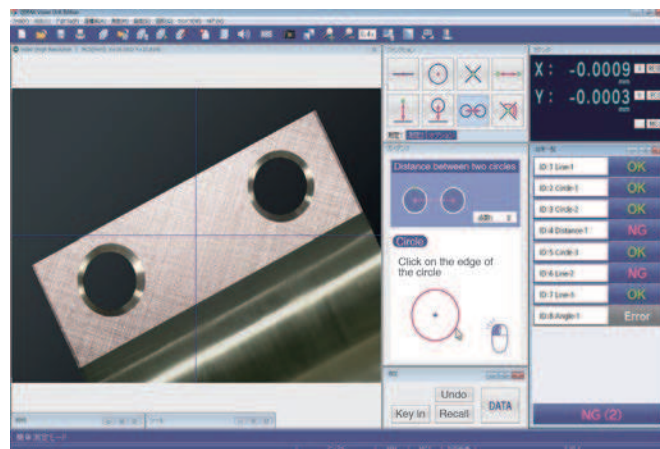
# 2-D Color Vision Measuring System Quick Image Series



## FEATURES

- Many simultaneous measurements can be executed with a single click.
- An illustrated guidance tool provides instructions for carrying out measurement.
- High-resolution images enable smooth observation and measurement.
- Icon based macros for maximum ease of use.
- Alignment of workpiece is automatically located via pattern recognition.
- Provides quick results of features (GO/NG/PASS/FAIL).

## QIPAK Simple Mode



## SPECIFICATIONS

Model	QI-A1010C	QI-A2010C	QI-A2017C	QI-A3017C	QI-A4020C
View field	1.26"x0.94" (32x24mm)				
Measurement mode	High resolution mode / Normal mode				
Measuring range (X, Y axis)	3.94"x3.94" (100x100mm)	7.87"x3.94" (200x100mm)	7.87"x6.69" (200x170mm)	11.81"x6.69" (300x170mm)	15.75"x7.87" (400x200mm)
Travel range (Z axis)	3.94" (100mm)				
Accuracy *1	Measurement accuracy within the screen	High resolution mode: $\pm 5\mu\text{m}$ / Normal mode: $\pm 8\mu\text{m}$			
	Repeatability within the screen ( $\pm 2\sigma$ )	High resolution mode: $\pm 1\mu\text{m}$ / Normal mode: $\pm 2\mu\text{m}$			
	Measurement accuracy (U1xy)	$\pm(5+0.08L)\mu\text{m}$ L: arbitrary measuring length (mm)			
Imaging device		3M pixel, Color camera			
Optical system	Magnification (Telecentric Optical System)	0.2x			
	Working distance	90mm			
	Depth of focus	High resolution mode: $\pm 0.6\text{mm}$ / Normal mode: $\pm 1\text{mm}$			
Illumination		Transmitted light: Green LED telecentric illumination; Co-axial Light: White LED; Ring light: quadrant white LED			
Accuracy guaranteed temperature		20 $\pm$ 1°C			

\*1 Inspected by Mitutoyo standard.

**Mitutoyo America Corporation**  
www.mitutoyo.com  
One Number to Serve You Better  
**1-888-MITUTOYO (1-888-648-8869)**

# Mitutoyo

**M<sup>3</sup> Solution Centers**  
Aurora, Illinois  
(Corporate Headquarters)  
Westford, Massachusetts  
Huntersville, North Carolina  
Mason, Ohio

Plymouth, Michigan  
City of Industry, California  
Birmingham, Alabama  
Renton, Washington  
Houston, Texas

- Coordinate Measuring Machines
- Vision Measuring Systems
- Form Measurement
- Optical Measuring
- Sensor Systems
- Testing Equipment and Seismometer
- Digital Scale and DRO Systems
- Small Tool Instruments and Data Management

**Note:** All information regarding our products, and in particular the illustrations, drawings, dimensional and performance data contained in this printed matter as well as other technical data are to be regarded as approximate average values. We therefore reserve the right to make changes to the corresponding designs. The stated standards, similar technical regulations, descriptions and illustrations of the products were valid at the time of printing. In addition, the latest applicable version of our General Trading Conditions will apply. Only quotations submitted by ourselves may be regarded as definitive.

Mitutoyo products are subject to US Export Administration Regulations (EAR). Re-export or relocation of our products may require prior approval by an appropriate governing authority.

### Trademarks and Registrations

Designations used by companies to distinguish their products are often claimed as trademarks. In all instances where Mitutoyo America Corporation is aware of a claim, the product names appear in initial capital or all capital letters. The appropriate companies should be contacted for more complete trademark and registration information.