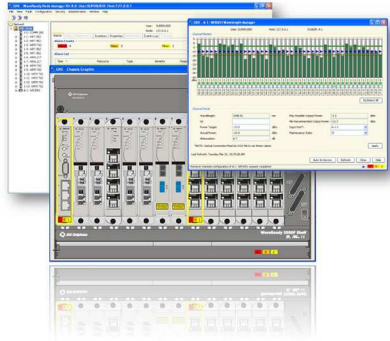


TMN and FCAPS Compliant Management

WaveReady™ Node Manager



Key Features

- Easy-to-use application for accessing and commissioning network elements
- Provides Node logs and Alarm Summary with filtering capabilities
- Supports Management of Remote Nodes through a GNE
- Supports software download to local and remote nodes
- Provides node user management

Applications

- Provision and configure DWDM networks
- Perform node maintenance and monitoring
- Facilitate field troubleshooting and fault isolation

WaveReady Node Management Solution

The JDSU WaveReady Node Manager is a simple, cost-effective management solution that simplifies the provisioning and configuration of WaveReady network elements (NEs). It provides a user intuitive graphical user interface (GUI) that enables the field team to rapidly access the node alarms and configuration to perform node maintenance, fault isolation and field trouble-shooting.

The Node Manager supports all the functions required to perform fault management, configuration management, user administration, performance management, and security management.

It is an easy-to-use, stand-alone application for provisioning local or remote NEs using the equipment craft or the Ethernet interface.

About WaveReady 3000

WaveReady 3000 modules and Node Manager are designed with the requirements of both small and large service providers and enterprises in mind. WaveReady provides simple, cost-effective optical transport with a modular approach that minimizes the total cost of ownership as networks grow and services evolve. WaveReady's independence from service architecture, data-rate, or protocol, and its principles of operational fit, carrier class reliability, and least-cost at any scale, enables customers to address service evolutions and revolutions knowing they are resting on a solid JDSU foundation.

Node Manager Features

The WaveReady Node Manager offers an intuitive point-and-click interface that supports numerous management features.

Fault and Alarm Management

- provides drill-down capabilities to node, card, and port
- lists and details active alarms on the node
- summarizes nodal alarms
- provides alarm logs and filters

Equipment Configuration

- provides auto-discovery of WaveReady and subtended nodes.
- enables provisioning of nodes and cards using local craft access or Ethernet management interface.
- provides remote management and configuration of WaveReady nodes over an embedded management or out-of-band supervisory channel
- displays node or card configuration, inventory, and status
- performs maintenance operations such as port loopback and protection switch
- provides node event logs
- generates system status reports

Administration

- set user accounts, passwords, and permissions
- performs configuration back-up and restore
- performs software upgrades and node synchronization

Performance

- monitors performance monitoring data on key transport modules
- supports user configurable threshold crossing alerts

Security

- provides user management and authentication
- provides security logs and event reports

Software Platform

- Java application on Windows Vista, Windows 7, and Windows XP.

3

Figure 1: Node View

Node Manager provides a user intuitive graphical interface to access NE. The NE can be managed using a menu driven approach or by using a realistic graphical view of the chassis equipped with transport modules.

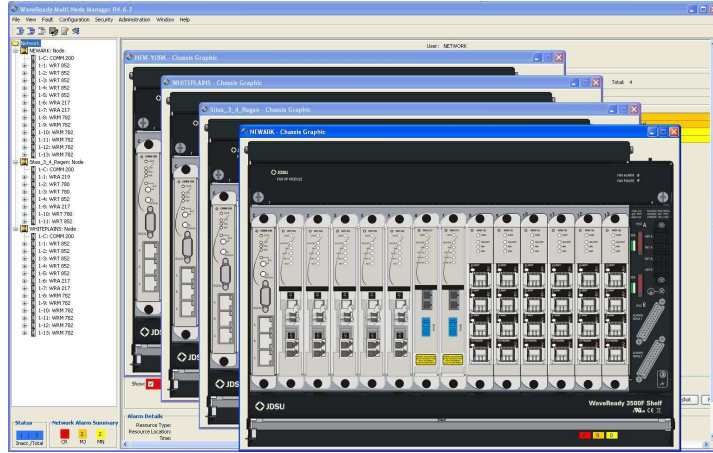


Figure 2: Alarms View

Alarms and alarm severity are displayed in real-time for each node.

Detailed information for each fault or alarm is displayed in the Alarms View.

Alarms are easily isolated by using filters or by selecting specific element.

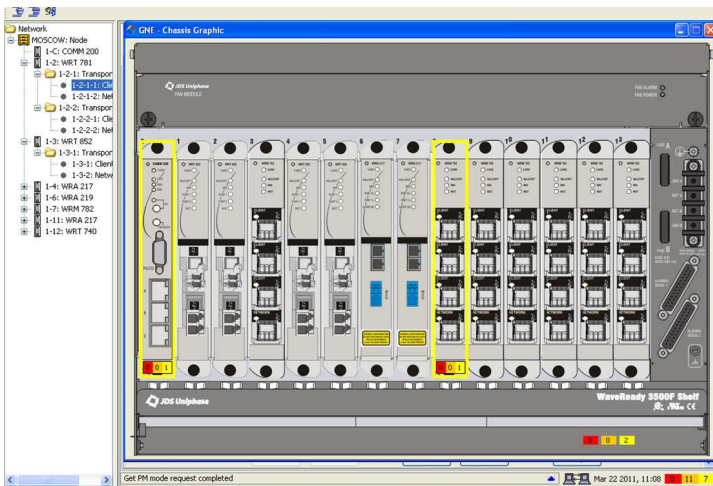


Figure 3: Performance Monitoring View

15 min/ 1 hour/ 24 hour Performance Monitoring Data and Threshold Crossing Alert can easily be accessed and referenced



Ordering

For more information on this or other products and their availability, please contact your local JDSU account manager or JDSU directly at 1-800-498-JDSU (5378) in North America and +800-5378-JDSU worldwide or via e-mail at customer.service@jdsu.com.

Product Code	Description
COM-200ET003Y-4.7	Communication Module 200 (COM-200) with WaveReady System Release 4.7 and one Node Manager license
WRM-NODEMNGSW-470	WaveReady Node Manager and System Release 4.7 Upgrade CD
COM-200ET003Y-4.8	Communication Module 200 (COM-200) with WaveReady System Release 4.8 and one Node Manager license
WRM-NODEMNGSW-480	WaveReady Node Manager and System Release 4.8 Upgrade CD