



Smart Link Mapper OTDR Applications

Turn any technician into an OTDR expert!

Smart Link Mapper applications let any technician use an OTDR to optimize fiber networks for enduring performance!

Three applications for T-BERD®/MTS OTDR platforms are available:

- SLM displays OTDR results in a simple, icon-based map view (SmartLink), providing a clear diagnostic of detected issues
- FTTA-SLM adds a fiber-to-the-antenna user interface and a specific algorithm for OTDR measurements in cell tower/rooftop environments
- FTTH-SLM adds a fiber-to-the-home interface and a specific algorithm for measurements through PON splitters

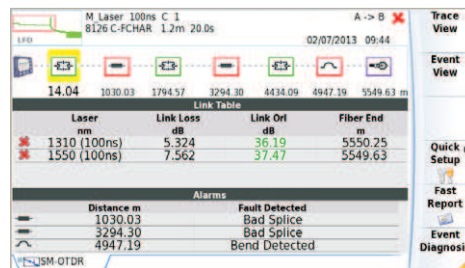
Smart Link Mapper applications are compatible with any point-to-point or point-to-multipoint network.

Benefits

- Makes OTDR result interpretation quick and easy
- Immediately provides a clear diagnostic when a bad link element is detected
- Speeds testing time and improves reliability
- Reduces truck rolls, re-testing, and cable waste



OTDR Trace view

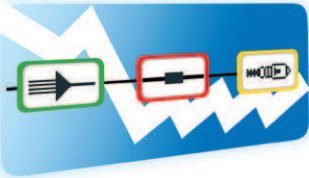


SmartLink view

Smart Link Mapper OTDR Applications

NETWORK AND SERVICE
ENABLEMENT

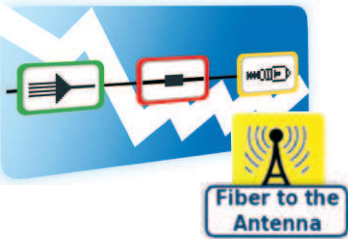
SLM



Enterprise/Access/Metro/Long and Very Long Haul

- Icon-based map view of OTDR links and events
- Essential summary table with Pass/Fail analysis
- Detection, identification, and clear diagnostics of issues

FTTA-SLM

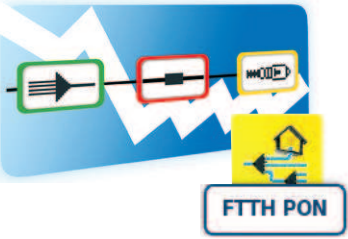


FTFA (cell tower/rooftop)

Includes all SLM features and benefits plus:

- Dedicated FTFA setup menus
- Auto selection of best acquisition parameters
- OTDR signal analysis based on FTFA applications
- Detection and identification of FTFA network elements along the fiber link

FTTH-SLM



FTTH (point-to-point/ point-to-multipoint)

Includes all SLM features and benefits plus:

- Dedicated FTTH setup menus
- Discover mode: auto-detection and identification of PON splitter types
- OptiPulses: auto measurement with short and long pulsewidths to detect all events before and after the splitter(s)
- Pass/Fail thresholds per ITU-T/IEEE PON standards

Ordering Information

Application	Part Number
SLM	ESMARTLINK-xK
SLM upgrade	ESMARTLINKxKUPG
FTTH-SLM	ESMARTFTTH-xK
FTTH-SLM upgrade	ESMARTFTTHxKUPG
FTFA-SLM	ESMARTFTFA-xK
FTFA-SLM upgrade	ESMARTFTFAxKUPG

In the part numbers,
x=2 for T-BERD/MTS-2000;
x=4 for T-BERD/MTS-4000;
x=6 for T-BERD/MTS-6000 (with s/n >10,000)/-6000A.

Key Features

- Directly correlates SmartLink view results and OTDR traces
- Automatic Pass/Fail analysis
- Compatible with multimode and single-mode OTDR modules
- Available for all recent T-BERD/MTS-2000, -4000, -6000A OTDR platforms



Pair of Connectors



Splice



Bend



Splitter



Install SLM on compatible deployed units or at the time of purchase.



North America
Tel: 1 855 ASK-JDSU
1 855 275-5378

Latin America
Tel: +1 954 688 5660
Fax: +1 954 345 4668

Asia Pacific
Tel: +852 2892 0990
Fax: +852 2892 0770

EMEA
Tel: +49 7121 86 2222
Fax: +49 7172 86 1222

www.jdsu.com/nse

Product specifications and descriptions in this document subject to change without notice. © 2013 JDS Uniphase Corporation 30175777 000 1013 SLMOTDR.PS.FORTM.AE October 2013