

ADVANCED FEATURES

- ❑ Automatic DC offset
- ❑ Totally Modular Design
- ❑ Two Stage Battery Charger
- ❑ Input Inrush Current Control
- ❑ Synchronized PFC Modules
- ❑ Efficiency exceeding 80%

RUGGED NAVY GALAXY™ SERIES

5KVA TRUE ON-LINE UPS

POWER FACTOR CORRECTED & GALVANICALLY ISOLATED

19" RACK MOUNT 5U HIGH



APPLICATIONS

This rugged UPS is specifically designed for submarine and shipboard applications in compliance to MIL-STD-1399, MIL-STD-461, MIL-STD-901, MIL-STD-810, and MIL-STD-740. It provides very high quality pure sinewave output (2% THD) and is capable of driving non-linear loads such as non-PFC Switching Power Supplies.



NOVA ELECTRIC
www.novaelectric.com
novasales@theallpower.com



A Leader in UPS Technology since 1966 - 500VA to 500+KVA

MADE IN USA

ADVANCED TRUE ONLINE RUGGED SINEWAVE UPS

ACCEPTS 3Ø 115VAC L-L DELTA 50 / 60Hz INPUT

DELIVERS GALVANICALLY ISOLATED 1Ø 115VAC 50, 60 OR 400 Hz OUTPUT

Designed to comply with MIL-STD-1399, MIL-STD-461, MIL-STD-167, MIL-STD-810, MIL-STD-901 and MIL-STD-740.

APPLICATIONS

This Power Factor Corrected Shipboard / Submarine Grade UPS is specifically designed and tested for Naval Applications where MIL-STD-1399 power requirements apply. This UPS contains many advanced features, yielding superior performance and reliability.

OPTIONS

- Single Phase Input
- RS 232 or SNMP Interface
- Monitoring Software
- Chassis Slides
- MS Connector Mates
- High Speed Mechanical Transfer Switch
- Custom Paint & Markings

ELECTRICAL

Optional Input Voltages available (select):
115, 120, 208, 220, 230, 240 VAC. 1Ø
115/200, 120/208, 220/380 3Ø
Optional Input Frequencies available (specify):
50, 60 or 400 Hz
Optional Output Voltages Available (specify):
115, 120, 208, 220, 230, 240 VAC 1Ø
Output Frequency (specify): 50, 60 or 400Hz
Voltage Regulation: ± 2% NL to FL
Frequency Regulation: 0.1%
Harmonic Distortion: 2% THD Typical
5% Max
Input Power Factor: 0.99
Efficiency at full load: 82% typical
Overload: 125% for 5 minutes

EXTERNAL BATTERIES

Premium 10 year life wide temp batteries which are sealed, maintenance- free, and user replaceable

PROTECTIVE FEATURES

AC & DC Input Circuit Breakers, Low Battery Shut Off, Overload & Thermal Protection, Audible Alarm with Silence Switch, and EPO.

ENVIRONMENTAL

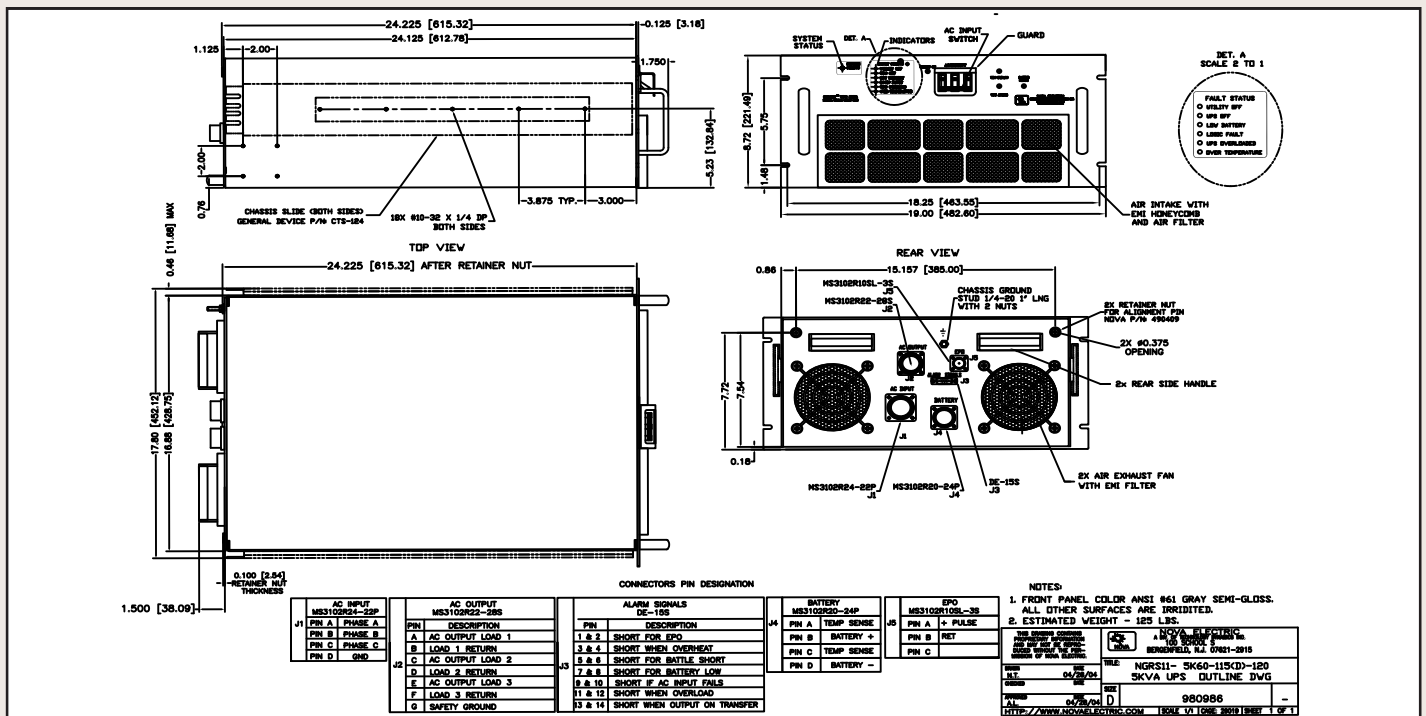
Operating Temp: -20 to +50°C per MIL-STD-810D
Storage Temp Range: -30° to +60°C
Humidity: to 95% non-condensing
Elevation: 15,000 Ft. (4,572m) operating
40,000Ft(12,192m) non-operating
Audible Noise: Less than 55 dbA at 5 ft.
Cooling: Forced air (exhaust at rear) Airflow 200 CFM Maximum
EMI: per MIL-STD-461B/E
Vibration: per IEC 68-2-6 Type I
Shock: 20g for 20mS half sinewave per MIL-STD-901C Grade A
Structureborne noise: MIL-STD-740B Grade A
MTBF: 100,000+ hours per field data
MTTR: 30 minutes

ALARMS & DIAGNOSTICS

System Status (Green/Red)
Utility Off (Red) UPS Overload (Red)
UPS Off (Red) Over Temp. (Red)
Low Battery (Red) Load On Utility (Red)
Logic Fault (Red) (with XFR SW Option)
Alarm Contacts: Standard
RS 232 or SNMP: Optional

MODEL SELECTION

PARTIAL MODEL SELECTION	KVA	INPUT	OUTPUT	UPS LBS	RUN TIME	BAT. LBS.
NGRS11-5K60-115(D)-115	5	115VAC L-L	115VAC	125	10 min	120



WEB : www.novaelectric.com

E-Mail : novasales@theallpower.com

PHONE : (201) 385-0500 FAX : (201) 385-0702



NOVA ELECTRIC

A Division of

TECHNOLOGY DYNAMICS, INC.

100 School St., Bergenfield NJ 07621



ISO 9001