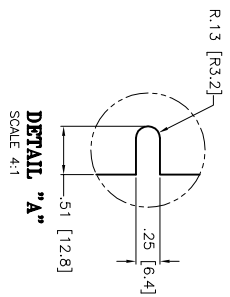
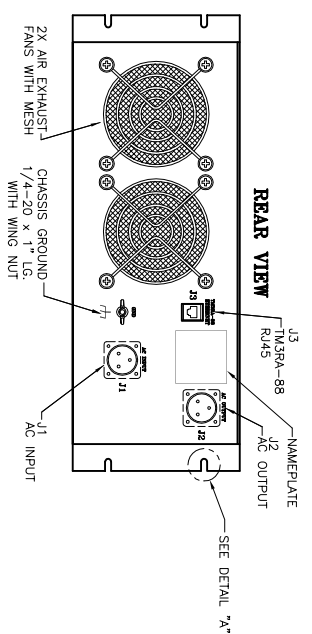
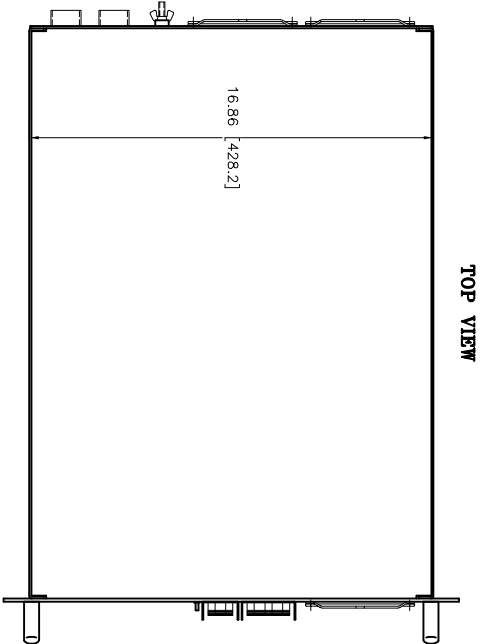
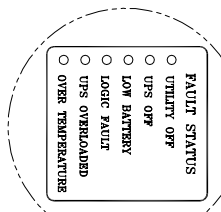
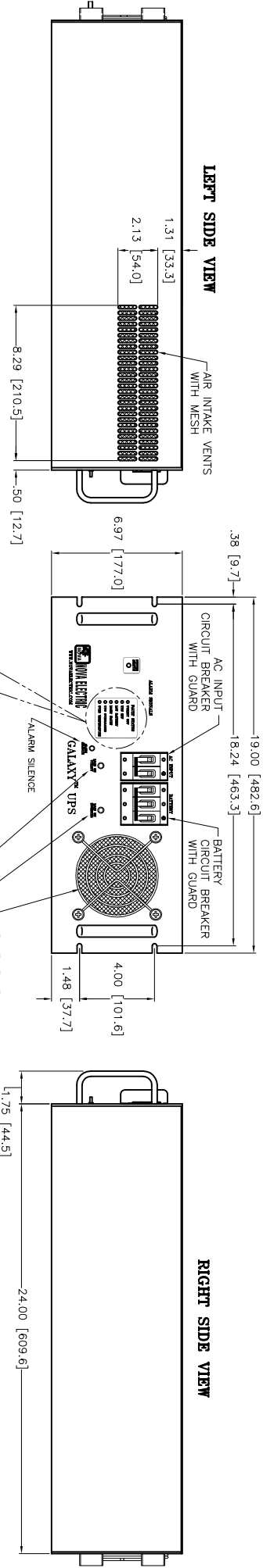


REVISIONS			
LT#	DESCRIPTION	BY	DATE
A	ADDED METRIC DIMENSIONS	RL	1/05/15
-	-	-	-



CONNECTORS PIN DESIGNATION

J1 AC INPUT

PIN DESCRIPTION	PIN
LINE	A
NEUTRAL	B
GROUND	C

J2 AC OUTPUT

PIN DESCRIPTION	PIN
LINE	A
NEUTRAL	B
GROUND	C

- NOTES:
1. ALL DIMENSIONS ARE IN INCHES AND MILLIMETERS [mm]
  2. ALL UNDIMENSIONED PICTORIAL CONFIGURATIONS ARE FOR REFERENCE ONLY.
  3. EXTERIOR COLOR - ANSI #61 GRAY SEMI-GLOSS.
  4. APPROXIMATE WEIGHT: 95 LBS.

THIS DRAWING IN DESIGN AND DETAIL IS THE PROPERTY OF NOVVA ELECTRIC. NO PARTS OR INFORMATION MAY BE REPRODUCED OR TRANSMITTED IN ANY FORM OR BY ANY MEANS, ELECTRONIC OR MECHANICAL, WITHOUT PERMISSION IN WRITING FROM NOVVA ELECTRIC. ALL RIGHTS OF DESIGN OR INVENTION ARE RESERVED.

NOVVA ELECTRIC  
A DIV. OF TECHNOLOGY DRIVERS INC.  
BERGENFIELD, NJ, 07821-2915

DATE: 07/09/11  
BY: BT  
CHECKED: AL  
APPROVED: AL

OUTLINE DRAWING, UPS  
9981042  
CAGE: 29019 | SHEET: 1 of 1