

## Electronics Battery Discharge Gauge, Series PT28



PT28

ENM introduces new Series PT28, a complete solid state battery discharge fuel gauge. The battery gauge (BDI) is a 10 bar LED display state of charge indicator. This model is ideal for electric vehicle applications.

The right LED is lit when the battery is properly charged as battery state of charge decreases, consecutively successive LED's light up (one at a time).

The left most 2 LED's flash indicate empty (80% depth of charge). When the proper charging voltage is applied (see operating voltage) all the LED's display will scan, indicating the charging system has begun. After 6 minutes, the meter will reset to full charge state. With the key switch input model it's use turns ON and OFF the LED display while still monitoring the battery state of charge.

Note: The input sensing voltage (L) or (H) terminal connection should be as close to the battery as possible for accurate discharge indicator reading. For dual voltage model low voltage battery (L) terminal input is use and the high voltage battery (H) terminal input is left open and vice versa.

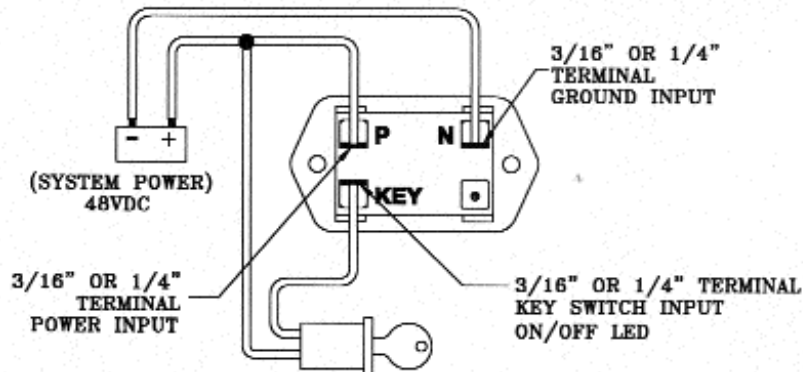
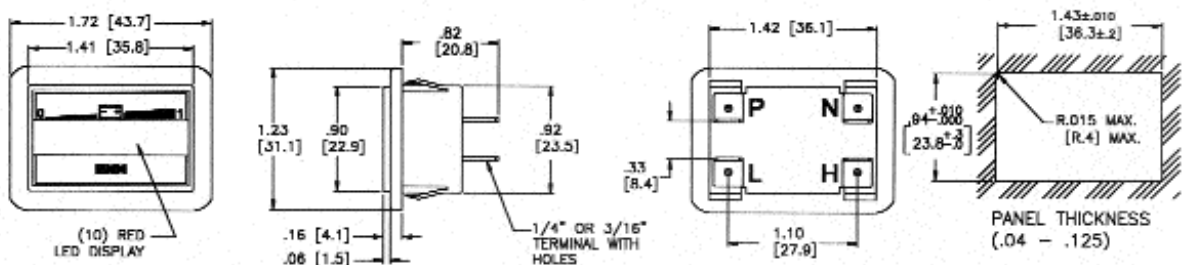
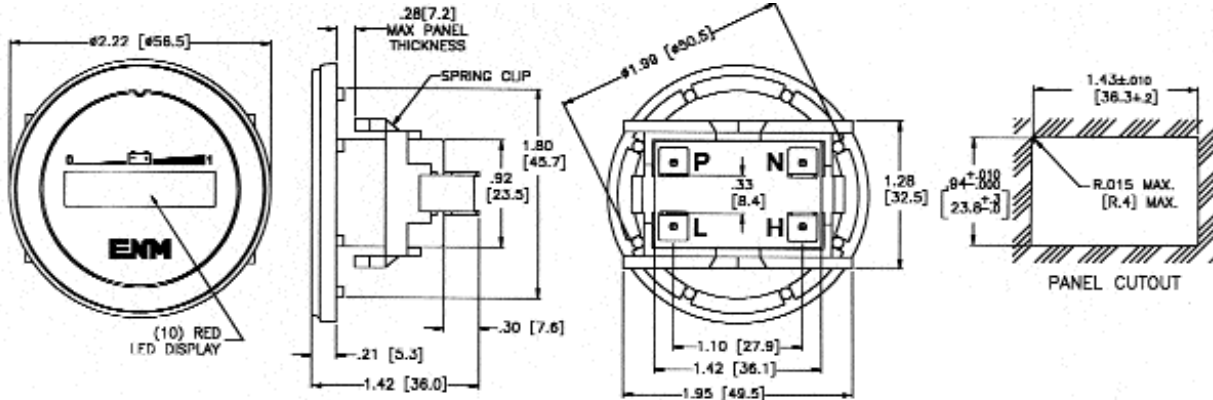
### Features

- High reliability
- Low cost and small size
- Lower operating current
- Wide operating voltage and temperature range
- Solid State Electronics
- Quartz Crystal
- Made in the U.S.A.

### Specifications

Capacity:	10 Red color LED for indicator
Operating supply for dual voltage:	12/24, 24/36, 36/48 VDC (No Key Terminal)
Operating Supply:	12, 24, 36, 48 VDC (With/Without Key Terminal)
Operating Current:	30 mA nominal
Operating Temperature:	Standard -10°C to +65°C (-22°F to +149°F)
Accuracy:	Better than +/- 0.01%
Configuration:	Round SAE Bezel with new push-on retaining ring. Other mounting styles are also available.

(ALL DIMENSIONS IN PARENTHESES ARE MM.)



Example of 48VDC System with Key Switch

2001 ENM Co.®

### LIMITED WARRANTY

ENM Company products are warranted to the consumer to be free from defects in material and workmanship for a period of 1 year. All ENM products which fall within the warranty period due to defects in material or workmanship will be repaired or replaced, at ENM's option, without charge to the consumer when returned with proof of purchase to any authorized ENM dealer in the United States, transportation charges prepaid, provided there is no evidence of improper installation, tampering or other abuse. All implied warranties, including any implied warranty of merchantability or fitness for a particular purpose, shall be limited in duration to the express warranty period specified above.

ENM disclaims any liability for consequential damages due to breach of any written or implied warranty on its products. \*Datasheet information subject to change.