

Electronic LCD Hour meter With Two Maintenance, **Series T49**



T49

ENM's Series T49 LCD 6-digit's hour meter with two factory pre-programmed flash alert maintenance reminder to help the operator know when it's time to perform service. The meter is self-powered keeping total running time displayed at all times.

The meters are available for the OEM customers with the desire preset time intervals. The meter is 100% sealed and protected from shock and vibration to keep out the harshest environments and provide years of service.

This instrument is ideal for any application that requires reliable time keeping and services maintenance schedule's in a small space. It's easy to install and fits three panel thickness.

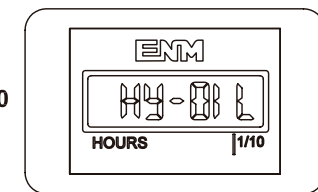
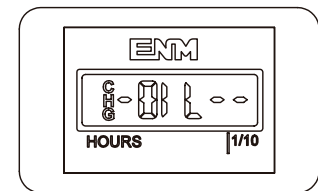
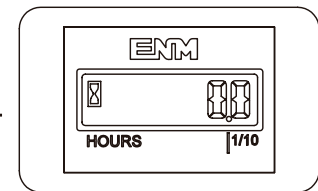
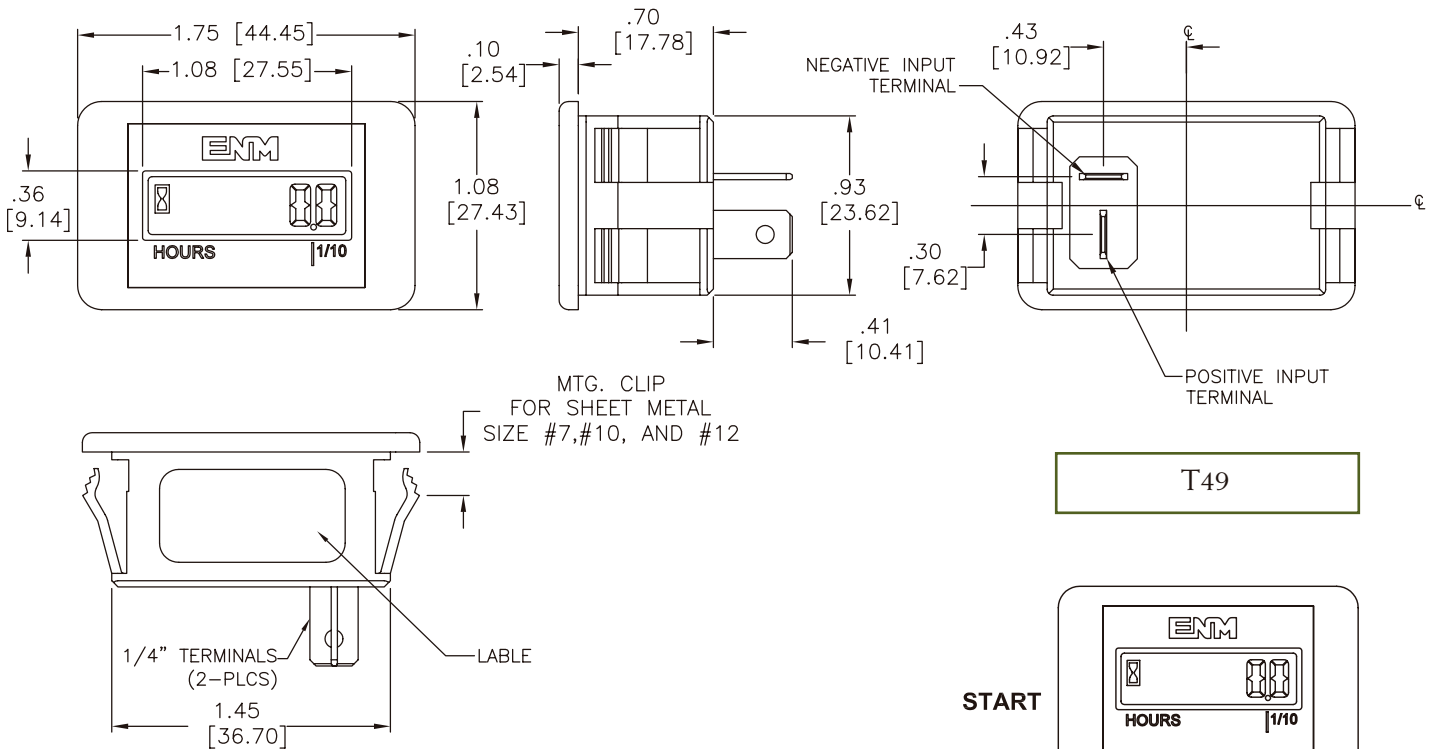
Features

- Low power Consumption
- Low cost and small size
- Silent operating, No moving Parts
- High shock and vibration specs.
- Solid State electronics
- Wide operating Temperature and voltage
- Special Flash Alert Programming
- Special spade orientation
- 100% sealed
- High reliability
- Polarity protected
- Quartz Crystal
- ISO 9001 Certified
- Made in the U.S.

Specifications

Display Reading:	99999.9 Hours meter and Hour glass as running indicator
Digit Height:	6-digits, (.216") [5.5MM] LCD
Operating Voltage:	Input range 8V-32VDC, other voltage are also available
Power Consumption:	app. 1.5mA, maximum @ 8VDC and 8mA, @ 32VDC
Accuracy:	Better than +/- 0.01% over entire range
Temperature:	Standard -30C to +85C (-40F to +185F)
Humidity:	95% SAE J1378
Vibration Resistance:	SAE J1378
Termination	1/4" male blade terminals see reverse side for more detail.
Mounting:	Rectangular with snap in clip
Configuration:	See reverse side for detail

2005 ENM Co.®



OPERATING DISPLAY

THE HOUR METER DISPLAY IS ALWAYS ON POWERED BY A INTERNAL LITHIUM BATTERY. WHEN POWER IS APPLIED TO TERMINAL THE HOUR GLASS SYMBOL WILL FLASH EVERY 1 SECOND INDICATING IT'S IN RUNNING MODE.

AT THE FIRST 20 HOUR MARK (BREAK-IN) THE DISPLAY WILL FLASH (CHG OIL) FOR 1- SECOND AND REOCCUR EVERY 4 SECOND'S FOR 4 HOURS. THIS SEQUENCE WILL HAPPEN 2 HOURS BEFORE AND 2 HOURS AFTER. CHG OIL SERVICE WILL BE REPEATED EVERY 100 HOURS.

AT 500 HOUR MARK THE DISPLAY WILL FLASH (HY-OIL) FOR 1-SECONDS AND REOCCUR EVERY 4 SECOND'S FOR 4-HOURS. THIS SEQUENCE WILL HAPPEN 2 HOURS BEFORE AND AFTER. HY-OIL WILL BE REPEATED EVERY 500 HOURS.

2005 ENM Co.®

LIMITED WARRANTY HOUR METERS

ENM Company products are warranted to the consumer to be free from defects in material and workmanship for a period of 1 year. All ENM products which fall within the warranty period due to defects in material or workmanship will be repaired or replaced, at ENM's option, without charge to the consumer when returned with proof of purchase to any authorized ENM dealer in the United States, transportation charges prepaid, provided there is no evidence of improper installation, tampering, or other abuse. All implied warranties, including any implied warranty of merchantability or fitness for a particular purpose, shall be limited in duration to the express warranty period specified above.

ENM disclaims any liability for consequential damages due to breach of any written or implied warranty on its products.