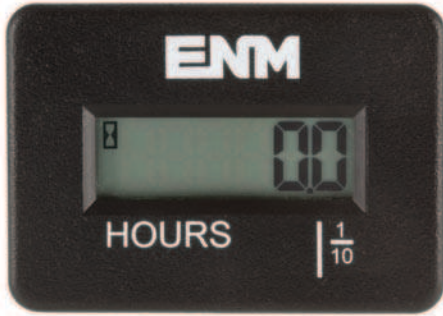


### LCD Hourmeter, EEPROM Memory, Epoxy Encapsulated T44 Series



T44D65A 4.5-60 VDC/VAC 50/60 Hz  
T44D69A 115-275 VDC/VAC 50/60 Hz

#### Features

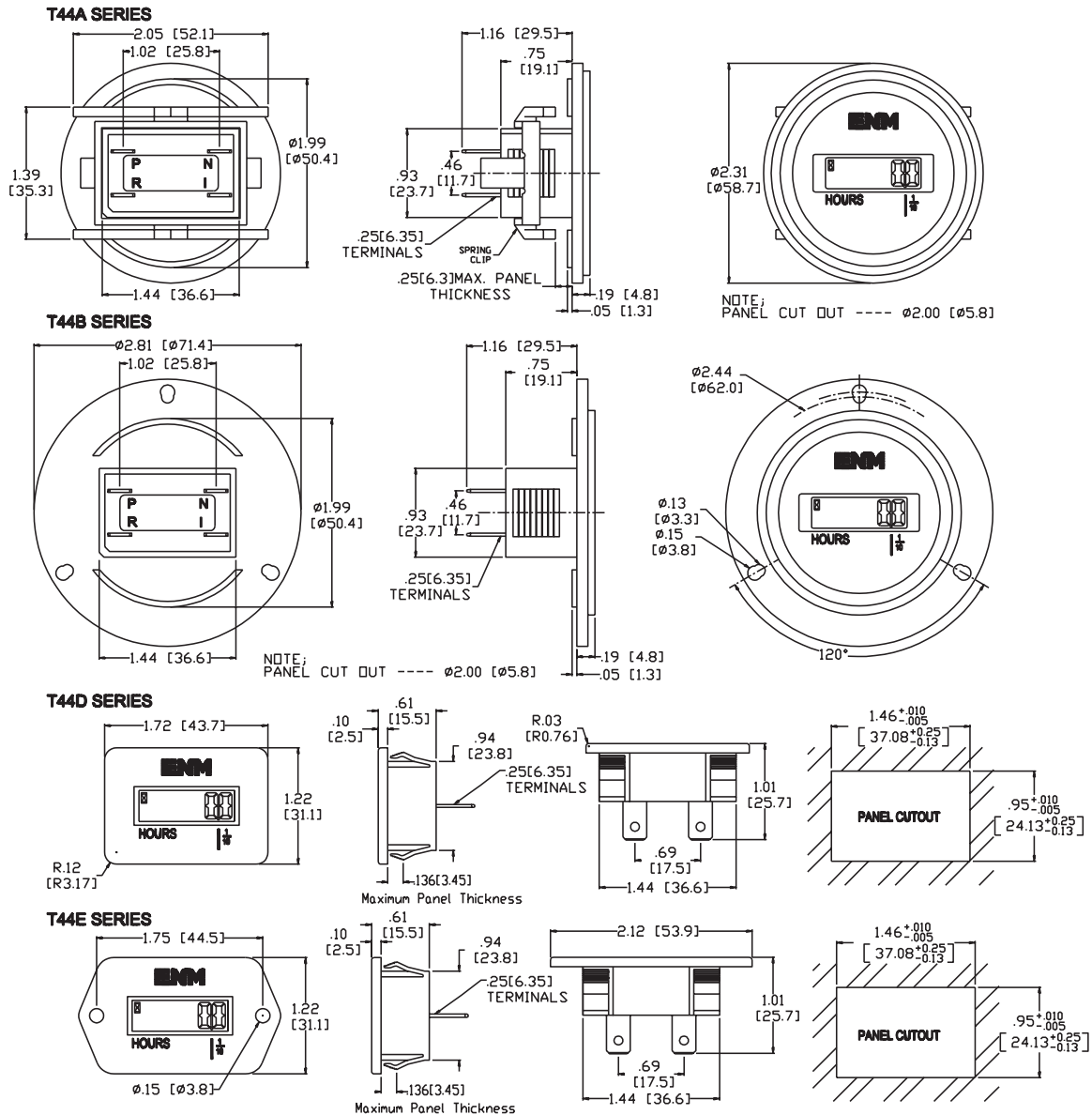
- Non-volatile memory (no battery)
- Epoxy encapsulated
- Data retained up to 25+ years
- AC/DC voltage compatible
- Easy to read 7mm digits
- Flashing hourglass icon shows it's working
- Fits standard panel cut-out
- Reset optional
- Wide operating temperature range
- Solid state electronics
- Silent operation, no moving parts

ENM's series T44 Hour Meter features a 6-digit, 7 segment LCD display. The accumulated hours are stored on powerless, non-volatile data backup using CMOS EEPROM technology, where small space and reliable instruments are required with memory that does not rely on a battery. The unit is ideal for maintenance applications. Hour meter displays hour glass and decimal point.

#### Specifications

Display Reading:	99999.9 with running indicator (Automatically recycle to zero)
Digit Height:	7mm (.276 in)
Operating Voltage:	4.5 to 60 V DC/AC, or 115 to 275V DC/AC 50/60HZ
Operation current:	(.5mA @ 4.5V), (6mA @ 60V) (.5mA @ 115V), (1.5mA @275V)
Resolution:	0.1 hours
Memory capacity:	CMOS EEPROM, Non-volatile memory has data retention in excess of 25+ years without power.
Input Device:	¼" terminals Other options are available
Storage and Operating Temperature:	-40° to +85° C
Humidity:	95% RH+32C for 2 Hours
Protected from:	Alternator load dump, inductive Switching
Totally Sealed Unit:	Epoxy encapsulated
Polarity:	Non-sensitive input
Case Style:	Front panel mount. Other styles are available

### T44 Series



2010 ENM Co.®

#### LIMITED WARRANTY

ENM Company resettable electromechanical counters are warranted to the consumer to be free from defects in material and workmanship for a period of 1 year. All ENM products which fall within the warranty period due to defects in material or workmanship will be repaired or replaced, at ENM's option, without charge to the consumer when returned with proof of purchase to any authorized ENM dealer in the United States, transportation charges prepaid, provided there is no evidence of improper installation, tampering, or other abuse. All implied warranties, including any implied warranty of merchantability or fitness for a particular purpose, shall be limited in duration to the express warranty period specified above. ENM disclaims any liability for consequential damages due to breach of any written or implied warranty on its products. Datasheet information subject to change.