

PC1210F0 10-40VDC

PC1210G0 85-265VAC/90-360VDC

ENM's series PC12 features two 6-digit, 7 segment LCD displays with channel two being programmable by customer. The service LED light informs the operator when the preset value setting is reached. The accumulated counts are stored on powerless, non-volatile data backup using CMOS EEPROM technology. The storage of data using this method does not depend on an internal battery and this will ensure that data are kept even during power outage. This model is ideal for maintenance applications or other applications that required keeping accurate counts of events.

Special functions:

- Allows customer to preset total counts and replace a failed meter without loss of total counts
- Key lock feature to prevent unauthorized access to meter's reset and programming functions
- Ease of connection with 10 pin wire harness with locking feature included

Features

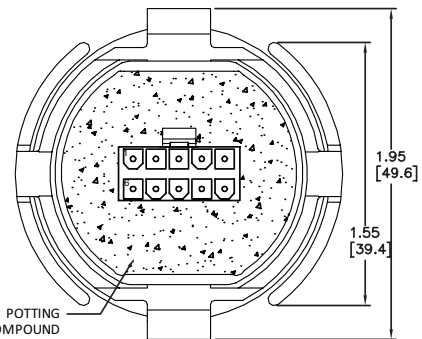
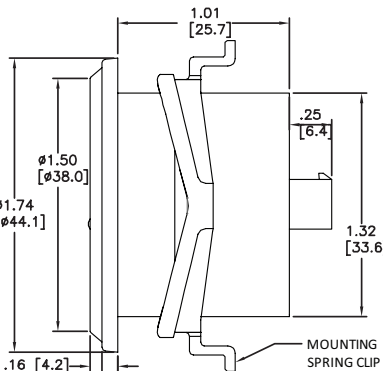
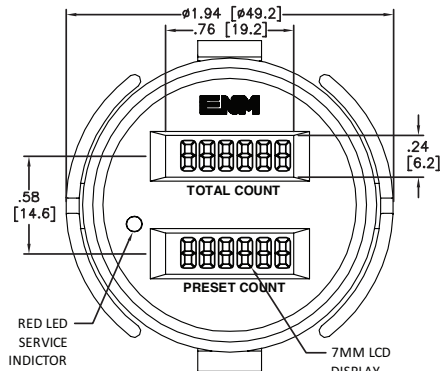
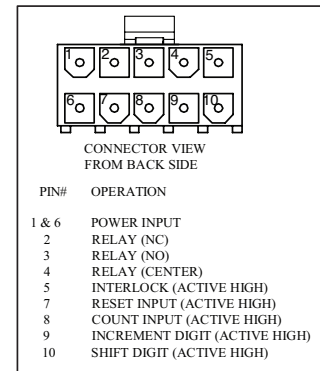
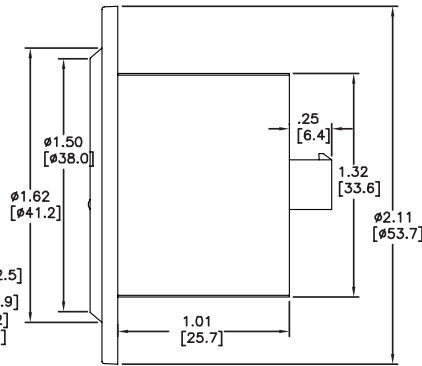
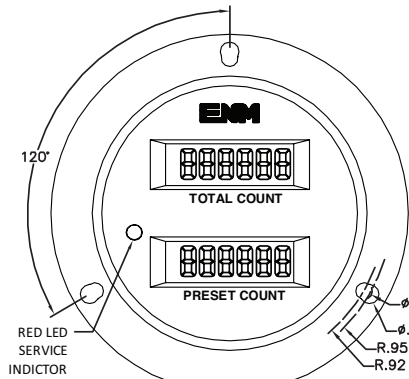
- Non-volatile memory (no battery)
- High reliability
- Totally sealed IP67
- Low cost and small size
- Low operating current
- Wide operating voltage and temperature range
- Interlock input (the reset and preset input are disabled)
- Relay and LED output
- Self programmable or factory set
- 10 pins connector wire harness included
- Polarity insensitive for the DC power input
- Solid State Electronics
- Quartz Crystal
- Made in the U.S.A.

Specifications

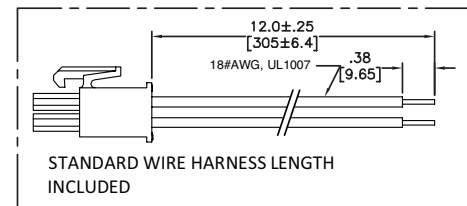
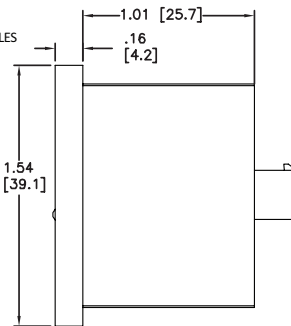
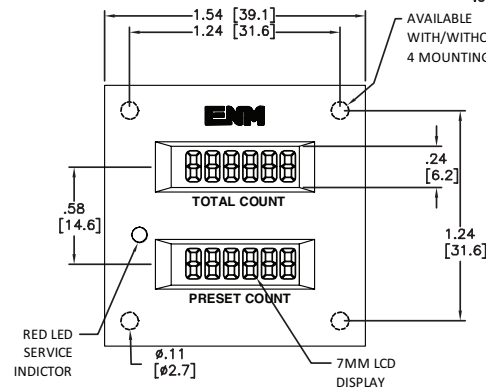
Display:	999999 Counts (both displays) Automatic recycle to zero
Character height:	Large 6-digits 7mm
Operating Voltage:	85-265 VAC 50/60 Hz (90-360 VDC) or 10-40 VDC
Operating current:	6mA nominal (50mA when LED and relay on)
Operating temperature:	-25C to +85C (-13 F to + 185 F) for the AC model -40 C to + 85 C (-40 F to + 185 F) for DC model
Count Speed:	20 C.P.S. for standard for AC/DC 250 C.P.S. speed count is available for DC
Vibration resistance:	Withstands 10 to 75 Hz. at 1 to 8 G's
Protected from:	Alternator load dump, inductive switching and reverse polarity
Configuration:	Round SAE bezel with new push-on retaining ring. Other mounting styles are also available.

2013 ENM Co.®

PC12 Series



Recommended panel cutout 2.0[50.8]



For programming instructions see TS198

2013 ENM Co.®

LIMITED WARRANTY

ENM Company resettable electromechanical counters are warranted to the consumer to be free from defects in material and workmanship for a period of 1 year. All ENM products which fall within the warranty period due to defects in material or workmanship will be repaired or replaced, at ENM's option, without charge to the consumer when returned with proof of purchase to any authorized ENM dealer in the United States, transportation charges prepaid, provided there is no evidence of improper installation, tampering, or other abuse. All implied warranties, including any implied warranty of merchantability or fitness for a particular purpose, shall be limited in duration to the express warranty period specified above. ENM disclaims any liability for consequential damages due to breach of any written or implied warranty on its products. Datasheet information subject to change.

SERIES PC12 SERVICE/COUNTER INSTRUCTION (85VAC-265VAC) OR (10-40VDC)

1. **TO HOOK UP THE METER**
 - CONNECT PIN #6 AND PIN #1 TO THE AC LINE POWER SOURCE FOR AC UNIT OR DC UNIT TO DC POWER SOURCE ON THE BACK OF UNIT.
 - TURN POWER ON, THE METER SHOULD DISPLAY (00) ON BOTH LCD SCREEN.

2. **TO ACTIVATE OR ENABLE BOTH COUNTERS**
 - CONNECT INPUT PULSE TO PIN #8 (FOR AC USE HOT SIDE WHILE DC USES POSITIVE SOURCE)
 - THE COUNTER SHOULD INCREMENT ONCE PER PULSE

3. **TO RESET THE PRESET COUNTER**
 - CONNECT PIN #7 MOMENTARILY TO THE AC LINE (HOT SIDE), FOR DC UNIT TO THE POSITIVE POWER SOURCE
 - THE BOTTOM DISPLAY SHOULD FLASH ALL ZERO (000000) AND (00) THE SERVICE LED LIGHT AND THE INTERNAL RELAY SHOULD TURN-OFF OR RESET.

4. **TO PROGRAM PRESET COUNTER**
 - MOMENTARILY TOUCH EITHER PIN #9 (INCREMENT DIGIT) OR PIN #10 (SHIFT DIGIT) TO THE POSITIVE POWER SOURCE ONCE TO ENTER PROGRAMMING MODE.
 - MOMENTARILY TOUCH PIN #10 TO POWER SOURCE ONCE TO SHIFT THE DIGIT POSITION STARTING FROM RIGHT TO LEFT.
 - MOMENTARILY TOUCH PIN #9 TO POWER SOURCE ONCE TO INCREMENT THE DIGIT FLASHING POSITION.
 - PROGRAMMING MODE EXITS AUTOMATICALLY AFTER 10 SECONDS OF NO ACTIVITY.

5. **OUTPUT RELAY CONNECTION**
 - CONNECT PIN #4 TO POWER SOURCE. CENTER CONNECTION OF THE RELAY
 - CONNECT PIN #3 USE AS NORMALLY OPEN CONTACT FOR THE RELAY.
 - CONNECT PIN #2 USE AS NORMALLY CLOSE CONTACT FOR THE RELAY.

6. **PROGRAMMING TOTAL COUNT**
 - PRE-SET THE SERVICE DISPLAY ON THE BOTTOM DISPLAY, USING PIN #9 TO INCREMENT DIGIT AND PIN #10 TO SHIFT DIGIT, TO 999999. IN 10 SECONDS OF NO ACTIVITY THE METER GOES BACK TO TOTAL COUNTS
 - ENTER THE SERVICE AGAIN USING (PIN #9 OR PIN #10) NOW THE TOP DISPLAY (TOTAL COUNTS) WILL FLASH, SET OR RESET THE DIGIT NUMBERS USING THE SAME METHOD DESCRIBED IN STEP #4

7. **INTERLOCK CONNECTION**
 - CONNECT PIN #5 TO THE AC LINE (HOT SIDE), FOR DC UNIT POSITIVE POWER SOURCE
 - PREVENTS UNAUTHORIZED PERSONNEL FROM CHANGING/RESETTING MAINTENANCES SERVICES OR THE TOTAL COUNTS.

NOTE: THE MAXIMUM OUTPUT CURRENT DRAW FOR RELAY CONTACT IS (.2 AMPS AT 265VAC UNIT AND OR 40VDC UNIT)

ASK FOR ENM DATA SHEET # 700 FOR MORE DETAIL