

### Electronic Hour Meters/Resettable Hour Meters T34 Series

Series T34 Hour Meters are push-button resettable. Easy installation options include 2-holes screw and spring-clip panel mounts as well as a rear mount version. The Series T34 is ideal for measuring maintenance intervals for various industrial equipment applications.



**T34BN64D**



**T34BJ64D**

#### Specifications

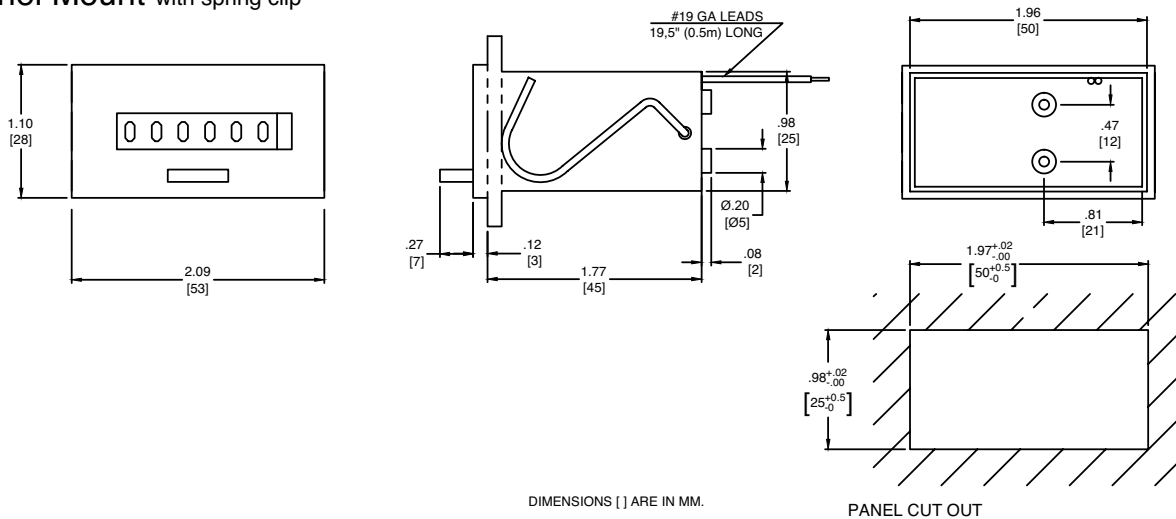
Display:	9999.99 h for AC models 99999.9 h for DC models
Voltage:	24, 110, 220 VAC, 50 or 60 Hz 12, 12-24, 24 VDC $\pm 15\%$
Figures:	White on black (hours) Red on white (decimals)
Figure size:	.158" high
Power Consumption:	Approx. 2W under 220 VAC Approx. 50mW under 12 VDC
Operating Temperature:	-10°C to 50°C
Mounting:	Panel mount, rear mount
Termination:	Leads - Standard Pins - Optional
Weight:	2.1 oz.

#### Features

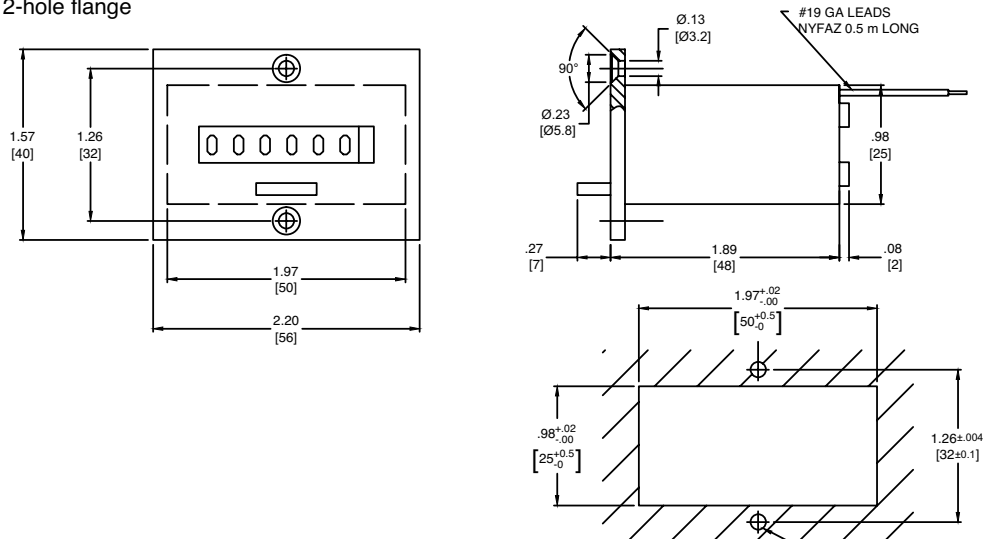
- Quartz accuracy
- Shock resistant/High reliability
- Low power consumption
- Synchronous motor driven
- Easy installation

### T34 Series

#### Panel Mount with spring clip



#### Panel Mount with 2-hole flange Rear Mount



2013 ENM Co.®

#### LIMITED WARRANTY

ENM Company resettable electromechanical counters are warranted to the consumer to be free from defects in material and workmanship for a period of 3 years or 10,000 hours. All ENM products which fall within the warranty period due to defects in material or workmanship will be repaired or replaced, at ENM's option, without charge to the consumer when returned with proof of purchase to any authorized ENM dealer in the United States, transportation charges prepaid, provided there is no evidence of improper installation, tampering, or other abuse. All implied warranties, including any implied warranty of merchantability or fitness for a particular purpose, shall be limited in duration to the express warranty period specified above. ENM disclaims any liability for consequential damages due to breach of any written or implied warranty on its products. Datasheet information subject to change.