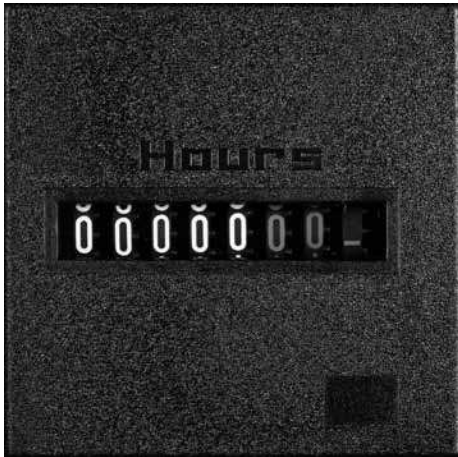


T32 Series

Series T32 is a synchronous motor driven hour meter at AC and stepper motor driven at DC. This hour meter can withstand even the most rugged applications. The completely insulated housing provides substantial protection against environmental influences. Applications include control of the running time of machines, apparatus, and instruments as well as recording maintenance time, warranty time, or rental use time.



T32BL72D



T32F72D

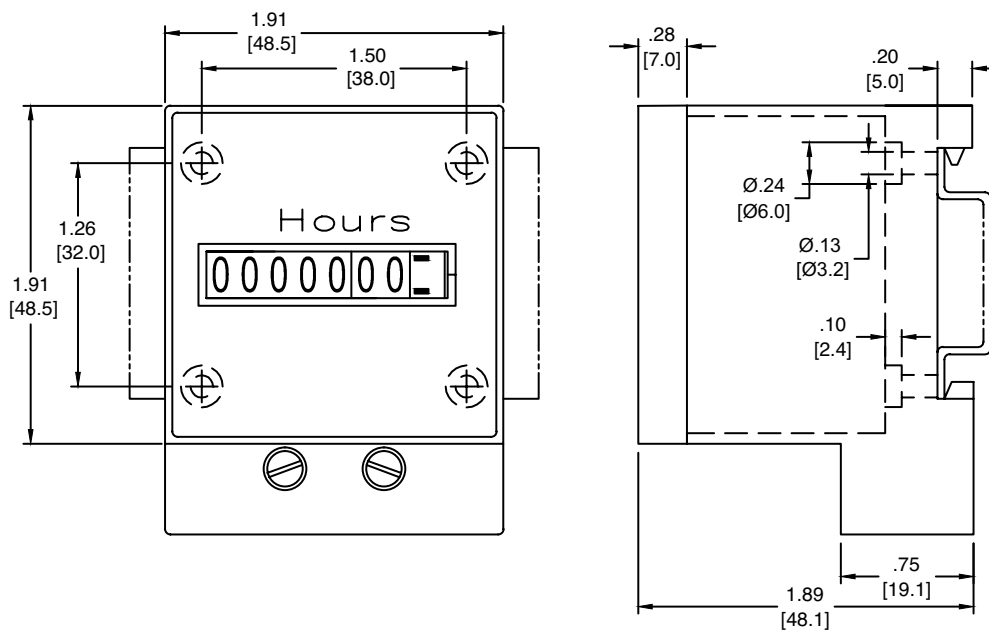
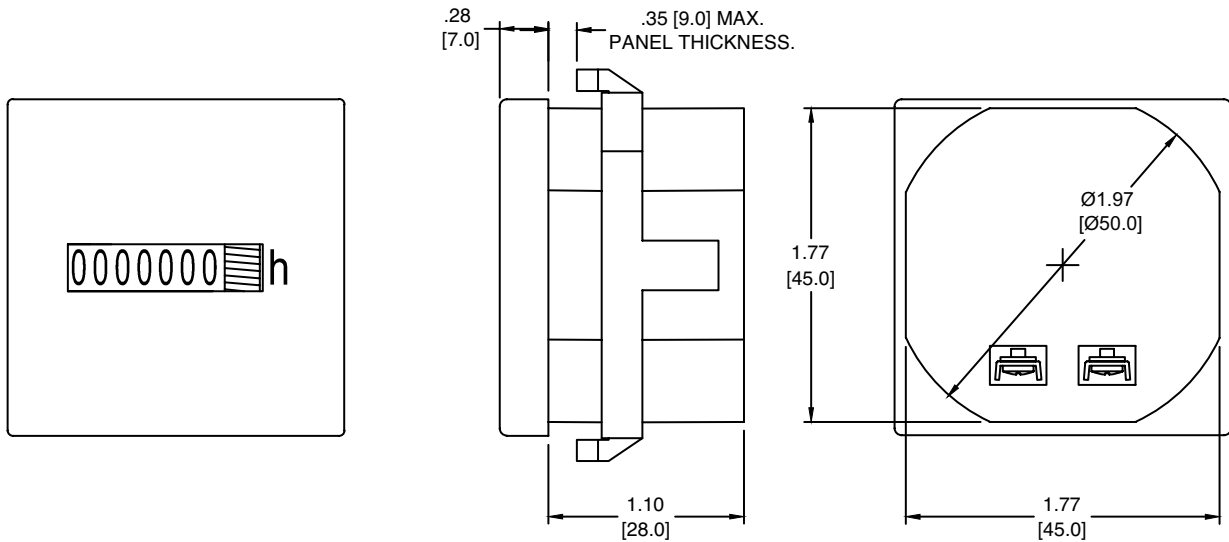
Features

- Panel and din rail mounts
- Low cost
- Shock resistant/High reliability
- Low power consumption
- Easy installation
- UL recognized

Specifications

Display:	99999.99
Figures:	White on black (hours) Red on black (decimals)
Figure Size:	0.158" high
Voltage:	24, 110, 220 VAC, 50 or 60 hz $\pm 15\%$ 12/24, 36/80, 110 VDC $\pm 10\%$ Special voltages available.
Power Consumption:	Approx. 2 W @ 220 VAC Approx. 500 mW @ 12 VDC
Operating Temperature Range:	-15° to 50°C (5° to 122°F)
Mounting:	Panel mount (includes slip on bezel) Din rail mount
Termination:	Screw- and amp-plug (standard) 12" leads (optional)
Weight:	1.0 oz. (Panel mount) 2.4 oz. (Din rail mount)

T32 Series



2013 ENM Co.®

LIMITED WARRANTY

ENM Company resettable electromechanical counters are warranted to the consumer to be free from defects in material and workmanship for a period of 3 years or 10,000 hours. All ENM products which fall within the warranty period due to defects in material or workmanship will be repaired or replaced, at ENM's option, without charge to the consumer when returned with proof of purchase to any authorized ENM dealer in the United States, transportation charges prepaid, provided there is no evidence of improper installation, tampering, or other abuse. All implied warranties, including any implied warranty of merchantability or fitness for a particular purpose, shall be limited in duration to the express warranty period specified above. ENM disclaims any liability for consequential damages due to breach of any written or implied warranty on its products. Datasheet information subject to change.