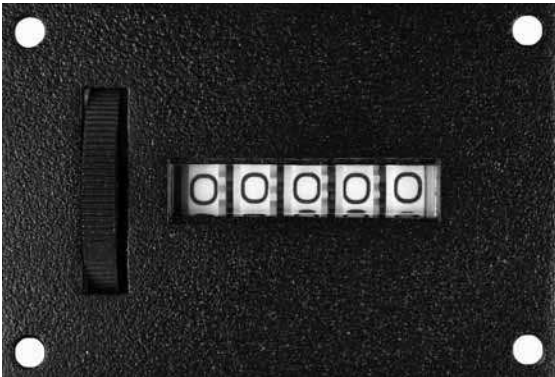


### Electric Counters/Knob Resettable E3B Series

The knob resettable Model E3B is a 5-digit counter offered in several variations to suit almost any counting application which requires resetting.

The Model E3B incorporates the same design principles and features as the popular non-resettable Model E2B. These include a dependable, field-proven electro-mechanical reciprocating verge ratchet drive made of Delrin, and "L" shaped mounting holes for a variety of mounting centers for either base mounting or back of panel installation. It also may be mounted on front of panel.

ENM's resettable Model E3B is perfectly interchangeable with its Model E2B and various counters of other manufacturer. It is ideal for various types of repeated batch counting or totalizing where counts may be logged, the counter reset to zero and the procedure begun anew up to 100,000 counts.



#### Features

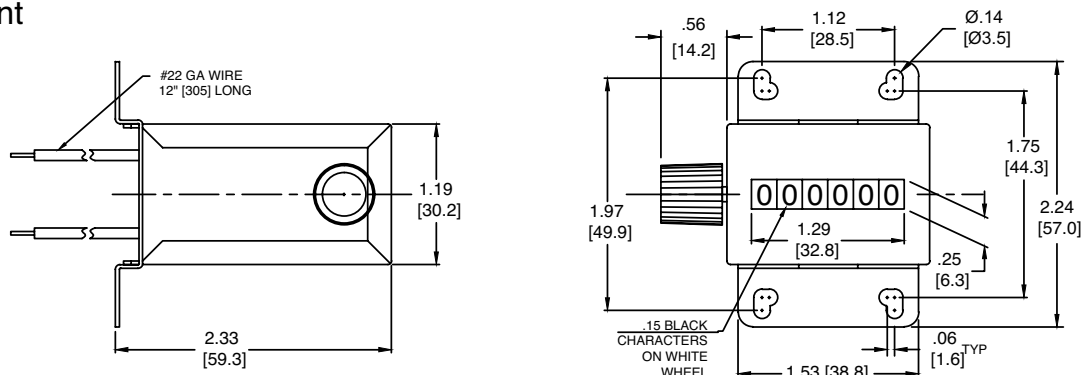
- Reciprocating Delrin verge ratchet drive
- Available in many standard variations
- Interchangeable mounting holes
- UL listed
- Wheel or knob reset
- MADE IN THE USA

#### Specifications

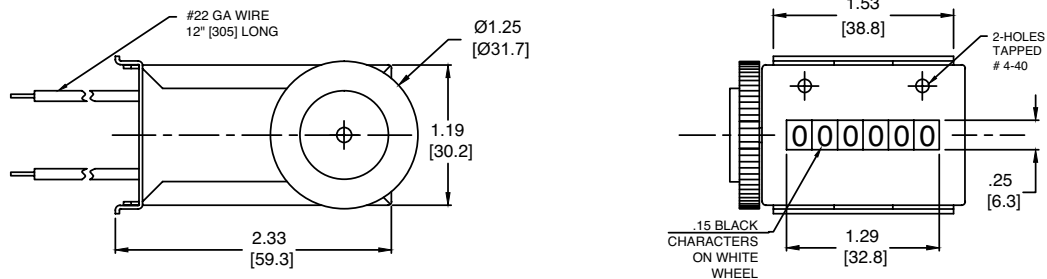
Figures:	5-digits, black on white, .156" high x .140" wide.
Reset:	Knob at side.
Speed Rating:	600 cpm; 1/2 count on power stroke, 1/2 count on return.
Voltage:	24, 115, 230 VAC, 50/60 Hz. 6, 12, 24 VDC
Power Consumption:	6 watts at 115 VAC.
Drive:	Reciprocating verge.
Mounting:	Universal base, back of panel or front of panel.
Weight:	5 oz. net

### E3B Series

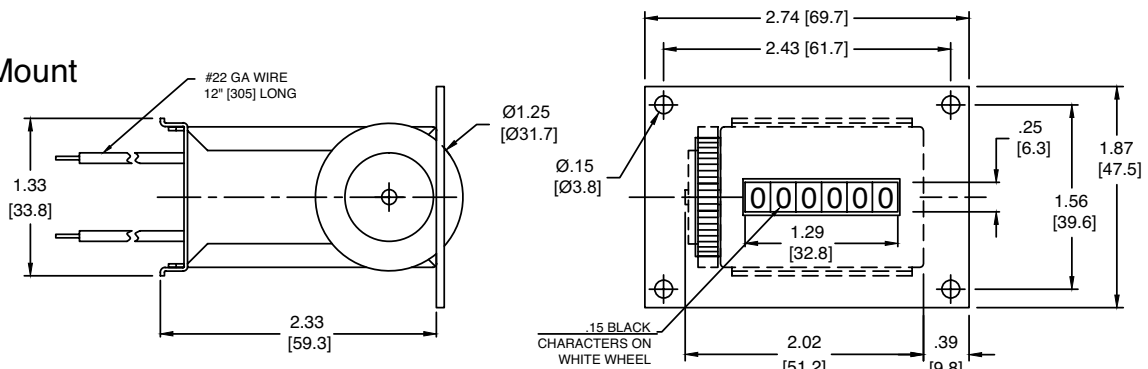
#### Base Mount



#### Back Of Panel Mount



#### Panel Mount



2013 ENM Co.®

#### LIMITED WARRANTY

ENM Company resettable electromechanical counters are warranted to the consumer to be free from defects in material and workmanship for a period of 1 year. All ENM products which fall within the warranty period due to defects in material or workmanship will be repaired or replaced, at ENM's option, without charge to the consumer when returned with proof of purchase to any authorized ENM dealer in the United States, transportation charges prepaid, provided there is no evidence of improper installation, tampering, or other abuse. All implied warranties, including any implied warranty of merchantability or fitness for a particular purpose, shall be limited in duration to the express warranty period specified above. ENM disclaims any liability for consequential damages due to breach of any written or implied warranty on its products. Datasheet information subject to change.