

## Miniature Electro Magnetic Counters, Series E12



E12 Series

ENM's new Series E12 miniature 7-digit electro-mechanical counter with easy installation when space is limited. With low power consumption these counters are ideal for slot machines in the gaming industries, vending machines and general counting systems.

The unique design allows accurate counting even under severe shock and vibrations. These counters will not lose their count from power failures or electrical noise.

### Features

- Miniature, Low Cost, Non-Resettable
- Low Power Consumption
- Compact Lightweight
- High Accuracy and Reliability
- Long Service Life
- Easy Installation
- No Battery Back-Up Required

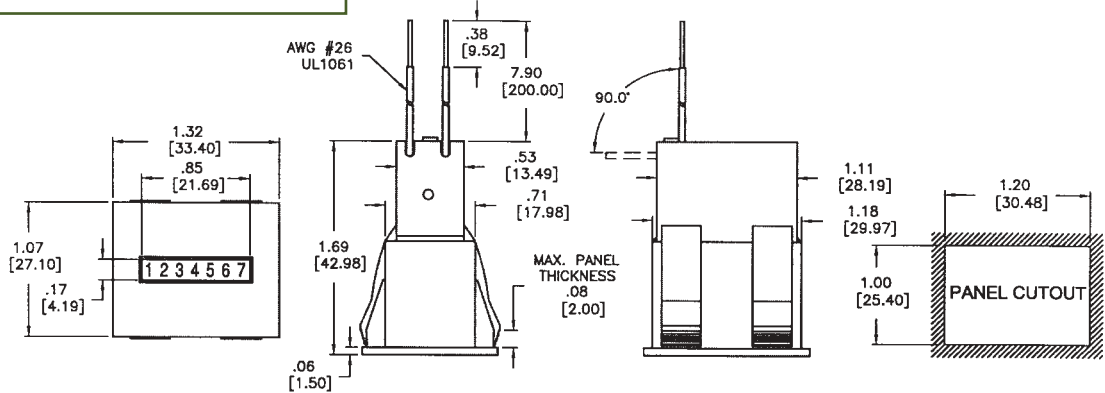
### ORDERING INFORMATION

PART NO.	MOUNTING STYLE	VOLTAGE
E12G733H	PC Board Pins	5V DC
E12G712H	PC Board Pins	12V DC
E12G75H	PC Board Pins	24V DC
E12G72H	PC Board Pins	115V AC
E12G733ZM 01	Frog Eye w/ Diode	5V DC
E12G712ZM 01	Frog Eye w/ Diode	12V DC
E12G75ZM 01	Frog Eye w/ Diode	24V DC
E12G72ZM	Frog Eye w/o Diode	115V AC
P7M733F	Front Panel w/ Clip	5V DC
P7M712F	Front Panel w/ Clip	12V DC
P7M75F	Front Panel w/ Clip	24V DC
P7M72F	Front Panel w/ Clip	115V AC

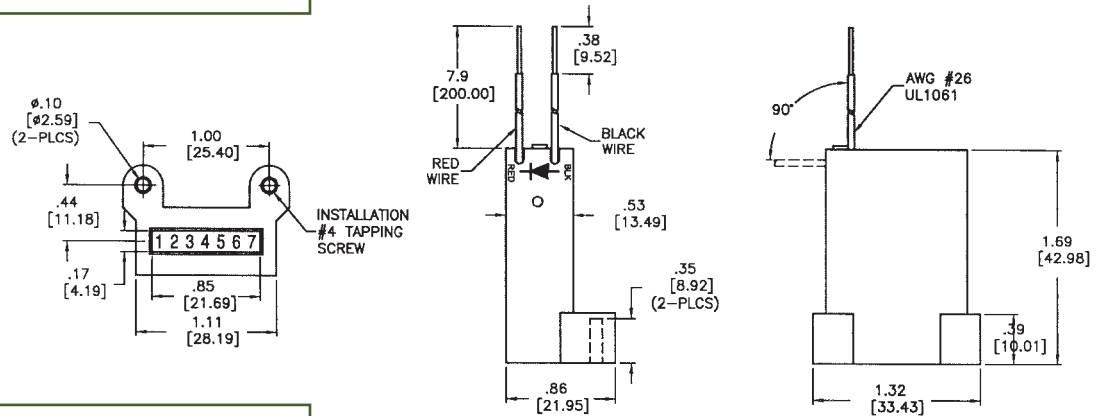
### Specifications

Display Reading:	9999999 Counts
Digit Height:	7-digits (.09") Magnifying window
Operating Voltage:	5V DC, 12V DC, 24V DC, and 110 AC
Service Life:	10 Million counts plus
Counter Speed:	15 C.P.S.
Power Consumption:	0.90W for 5V DC 0.85W for 12V DC 0.95W for 24V DC
Mounting Style:	Direct PCB mount, easy snap-in panel mount or back of panel
Operating Temperature:	Standard -10°C to +60°C
Termination:	Wire leads, or pins see reverse side for more detail.
Weight:	0.70 oz.

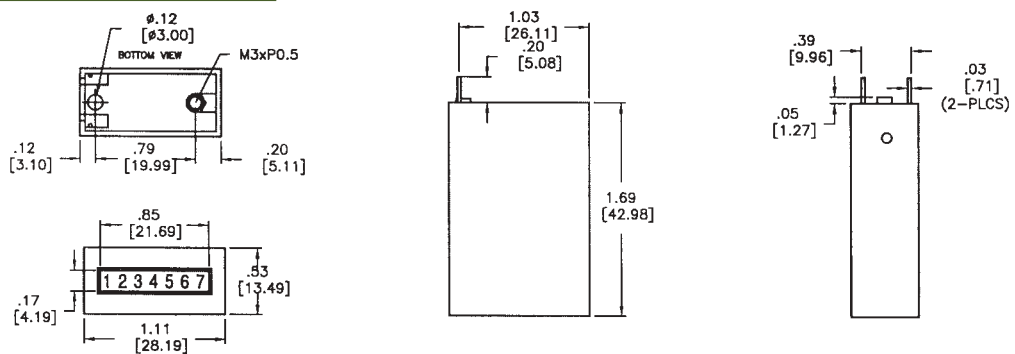
### P7M7XXF SERIES



### E12G7XXZM SERIES



### E12G7XXH SERIES



2003 ENM Co.®

#### LIMITED WARRANTY

ENM Company products are warranted to the consumer to be free from defects in material and workmanship for a period of 1 year. All ENM products which fall within the warranty period due to defects in material or workmanship will be repaired or replaced, at ENM's option, without charge to the consumer when returned with proof of purchase to any authorized ENM dealer in the United States, transportation charges prepaid, provided there is no evidence of improper installation, tampering or other abuse. All implied warranties, including any implied warranty of merchantability or fitness for a particular purpose, shall be limited in duration to the express warranty period specified above.

ENM disclaims any liability for consequential damages due to breach of any written or implied warranty on its products.