

# Resettable Electromechanical Counter, E5J Series



E5J65VI - 2-holes Panel Mount 24VDC



E5J62V - Bail Mount 115VAC

ENM's E5J series is a new line of resettable electric counter's that is compact and easy to install. The small size makes the unit ideal for control panels, test equipment, gaming and vending machines, and medical equipments.

The series has a high degree of accuracy and an operating life of over 100 million counts. The push button reset is conveniently located in the front for easy to reach reset. The large, 6 digit displays makes the unit easily readable.

## Specifications

Display Reading:	999999
Digit Height:	4mm (.157 in), white on black
Operating Voltage:	12 VDC, 24 VDC, 115 VAC, 230 VAC
Power Consumption:	Approx. 3 watts for 115VAC, approx. 2 watts for 12&24 VDC
Speed:	10 Hz max (600 counts/minute)
Pulse Width:	50 millisecond minimum
Continuous: Energizing	Permissible
Operating Life:	Over 100 million counts
Temperature:	-26° C to 60° C
Termination:	22 AWG, 105°C wire leads, 254mm(10 in) long
Mounting:	Panel mounts, base mount, bail mount
Reset:	Front push-button

\* Do not reset push button during change over.

## Features

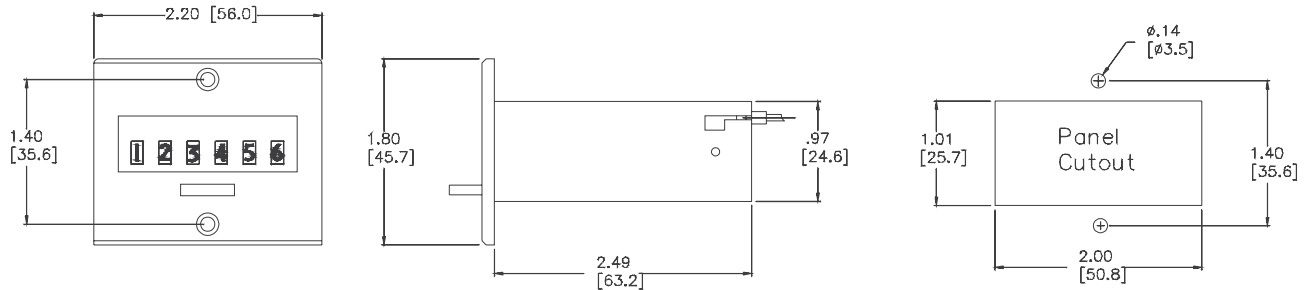
- High degree of accuracy
- Quick push-button reset
- Wide temperature range
- Easy to read numbers
- Long operating life
- Compact size
- No maintenance required
- CE & RoHs compliant

E5J Series

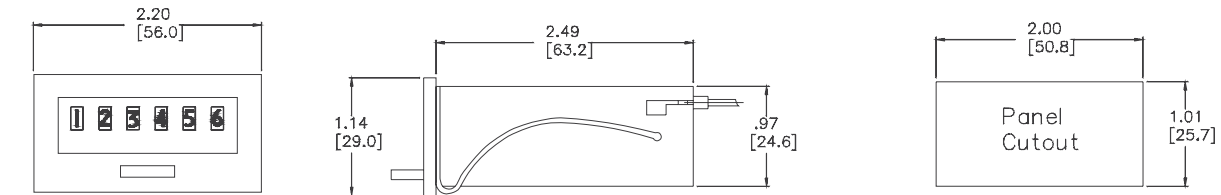
### Dimensions:

#### Panel Mount - 6 Figure

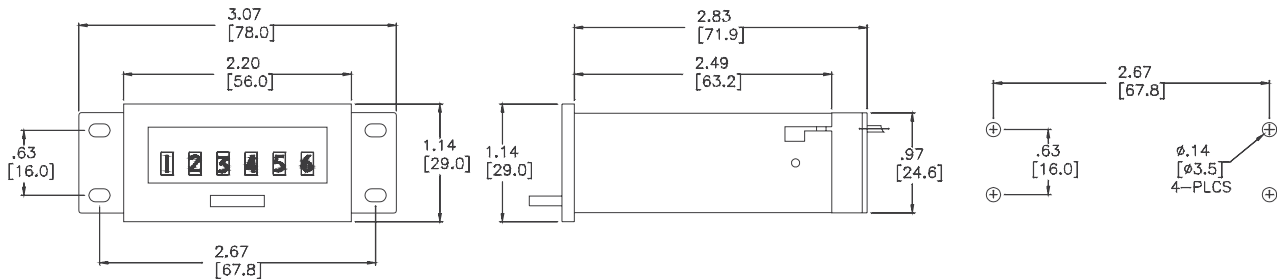
(All dimensions in brackets are in millimeter.)



#### Bail Mount - 6 Figure



#### Base Mount - 6 Figure



2009 ENM Co.®

#### LIMITED WARRANTY RESETTABLE ELECTROMECHANICAL COUNTER

ENM Company resettable electromechanical counters are warranted to be free from defects in material and workmanship for a period of 1 year. All ENM products which fall within the warranty period due to defects in material or workmanship will be repaired or replaced, at ENM's option, without charge to the consumer when returned with proof of purchase to any authorized ENM dealer in the United States, transportation charges prepaid, provided there is no evidence of improper installation, tampering, or other abuse. All implied warranties, including any implied warranty of merchantability or fitness for a particular purpose, shall be limited in duration to the express warranty period specified above. ENM disclaims any liability for consequential damages due to breach of any written or implied warranty on its products. Datasheet information subject to change.